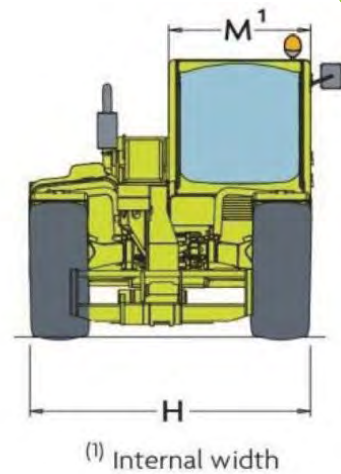
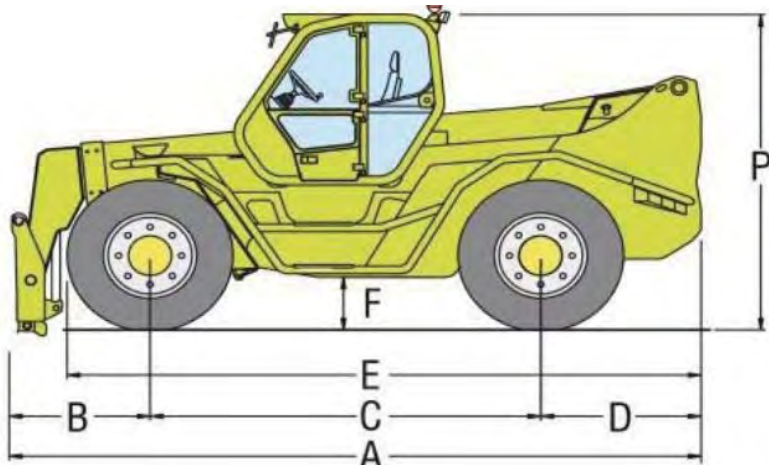
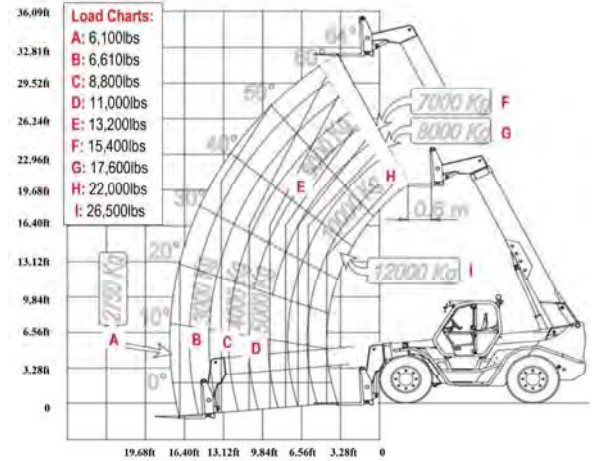




# SPECIFICATIONS: P 120.10 HM



Power / 6 Cylinder Turbo Diesel .....Iveco/145 HP  
 Transmission ..... 2 Speed / Hydrostatic  
 Maximum Speed ..... 25 MPH  
 Total Unladen Mass (with forks) ..... 34,500 LBS  
 Boom Sideshift .....Standard  
 Frame Leveling .....Standard  
 Load Sensing Hydraulic Pump (PSI-gal/min) .....3,340-38  
 Fuel Capacity ..... 48.8 Gallons  
 Hydraulic Oil Capacity ..... 3.2 Gallons  
 Tires ..... 17.5-25  
 Turning Radius ..... 14'-2"  
 4 Wheel Drive / 3 Steering Modes ..... Standard  
 Hydraulic System ..... Load-sensing  
 Control and Command System ..... Electronic MERlin



Dimensions (FT)					
A	18' -10"	D	4' -4"	H	7' -10"
B	3' -10"	E	17' -3"	M	3' -3"
C	10' -8"	F	1' -6"	P	9' -4"

DEALER INFORMATION: