

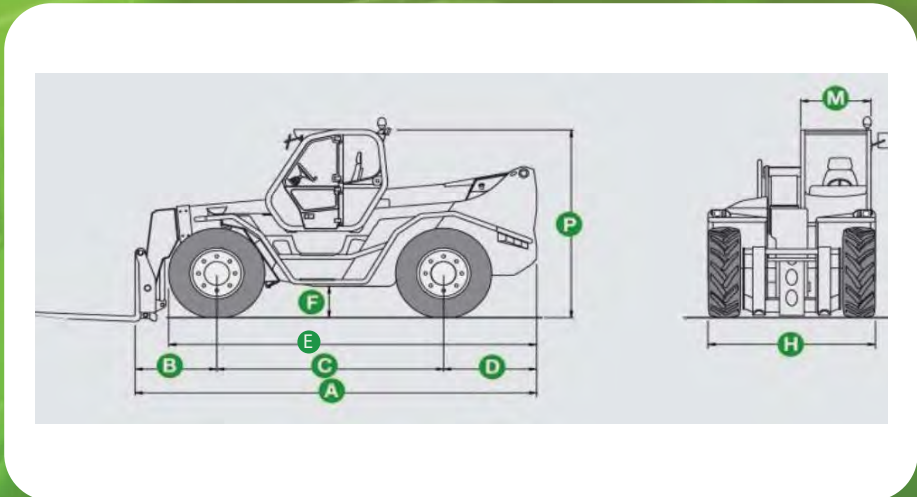
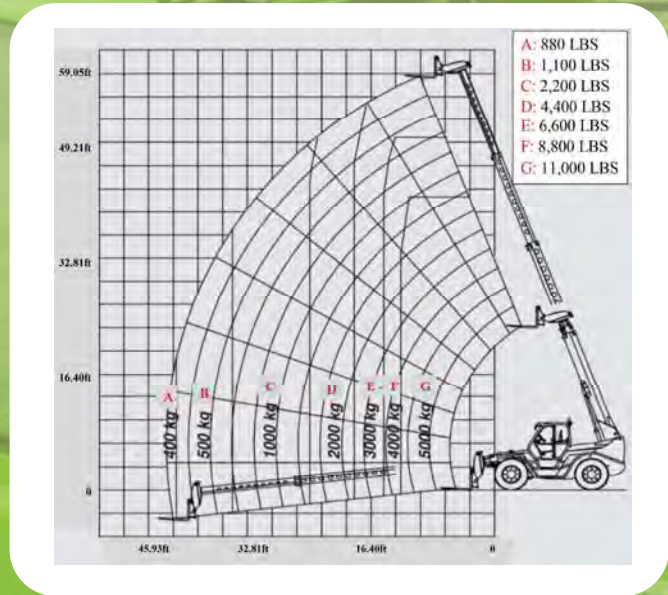


- **MAXIMUM LOAD CAPACITY: 11,000 LBS**
- **MAXIMUM LIFT HEIGHT: 58' 5"**
- **MAXIMUM REACH: 43' 3"**
- **LIFT CAPACITY AT MAXIMUM LIFT HEIGHT: 6,600 LBS**
- **LIFT CAPACITY AT MAXIMUM FORWARD REACH: 880 LBS**

SPECIFICATIONS: P 50.18 HM



Power / 6 Cylinder Turbo Diesel Iveco / 145 HP
 Transmission 2 Speed / Hydrostatic
 Maximum Speed 25 MPH
 Total Unladen Mass (With Forks) 33,951 LBS
 Boom Sideshift Standard / 1'-6"
 Frame Leveling Standard
 Load Sensing Hydraulic Pump (PSI-gal/min) ..3,335-36
 Fuel Capacity 48.8 Gallons
 Hydraulic Oil Capacity 47.5 Gallons
 Tires 17.5-25
 Turning Radius 14'-2"
 4 Wheel Drive / 3 Steering Modes Standard
 Control and Command System Electronic MERlin



Dimensions (FT)					
A	20'-2"	D	1'-6"	H	7'-10"
B	5'-1"	E	7'-10"	M	3'-4"
C	10'-7"	F	1'-10"	P	9'-5"

DEALER INFORMATION: