



MERLO

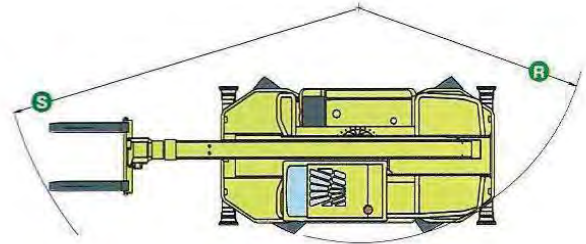
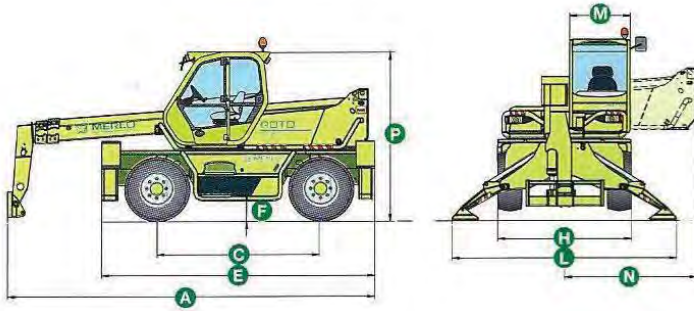
ROTO 38.16



- **MAXIMUM LOAD CAPACITY: 8,400 LBS**
- **MAXIMUM LIFT HEIGHT: 51' 5"**
- **MAXIMUM FORWARD REACH: 42' 6"**
- **LOAD CAPACITY AT MAXIMUM HEIGHT: 5,500 LBS**

ROTO 38.16

CHARACTERISTICS AND PERFORMANCE



» Cab steel frame that complies with the international **ISO 3449 Level II FOPS** (Falling Object Protective Structure) standard

» **Electro-mechanical joystick** controls

» **Steering wheel tilt** is adjustable by up to 16 degrees

» **Folding stabilizers**

» **Hydropneumatic suspension** ensures maximum driving comfort and stability by leveling the machine (S version)

» Telescopic boom **extension mechanism** housed entirely **within the boom** assembly for maximum protection and reliability

» Fork carriage equipped with the hydraulic locking **Tac-lock** system giving an extraordinary competitive advantage against conventional, manual hook-up systems

» **Perkins turbo 4 cylinder** engine, delivering 101HP

» **Hydrostatic transmission**

» **Load-sensing hydraulic pump**

» **Maximum speed: 15mph**

Total weight unladen, with forks (lbs.)	26,000
Maximum load capacity (lbs.)	8,400
Maximum Lift height (ft.)	51'-5"
Maximum forward reach (ft.)	42'-6"
Lift height at maximum load capacity (ft.)	32'-1"
Forward reach at maximum load capacity (ft.)	18'-0"
Load capacity at maximum height (lbs.)	5,500
Load capacity at maximum forward reach (lbs.)	1,550
Turret rotation (degrees)	415(2)
Engine (make / cylinder/ HP)	Perkins / 4 / 101
Fuel capacity (gal)	40
Speed in 1st gear range (mph)	7
Speed in 2nd gear range (mph)	15
Load sensing hydraulic system (PSI-gal/min)	3,050-29
Hydraulic oil capacity (gal)	34
Electrical circuit (V)	12
Battery (Ah)	100
Hydraulically controlled stabilizers	•(3)
Hydropneumatic suspension	•(4)
Cab compliant with FOPS standards	•
Tilting cab	-
Merlin electronic control system	-
Electro-mechanical joystick controls	•
Electronic joystick controls	-
Tac-Lock attachment coupling	•(5)
Auxiliary boom hydraulic service	•
Two floating forks (48 inches long)	•
Hydrostatic transmission	•
Hydrostatic oil capacity (gal)	3.1
Finger-Touch direction reversing control	•
Permanent four-wheel drive	•
Four wheel steering	•
Service disk brakes on all wheels	•
Automatically locking parking brake	•
Tires	405 / 70-20
Radio remote control	◦
Pneumatic seat	◦
Rear differential lock	◦
Four cab working lights (2 front & 2 back)	◦
Manual air conditioning system	◦
Roof window wiper	◦
Manual battery isolator	◦
Front and roof sun shade	◦

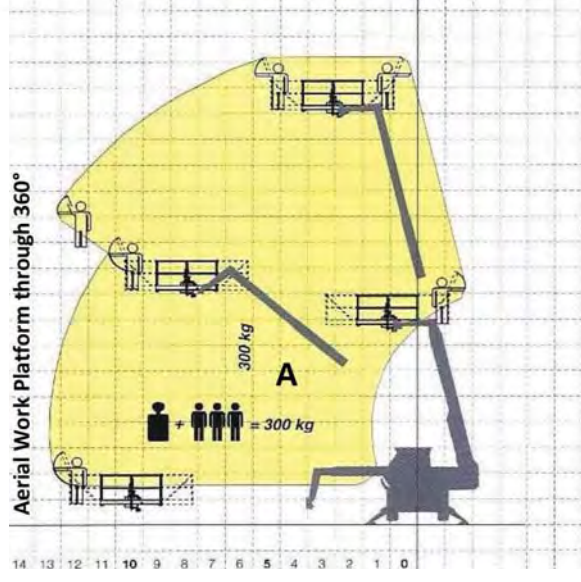
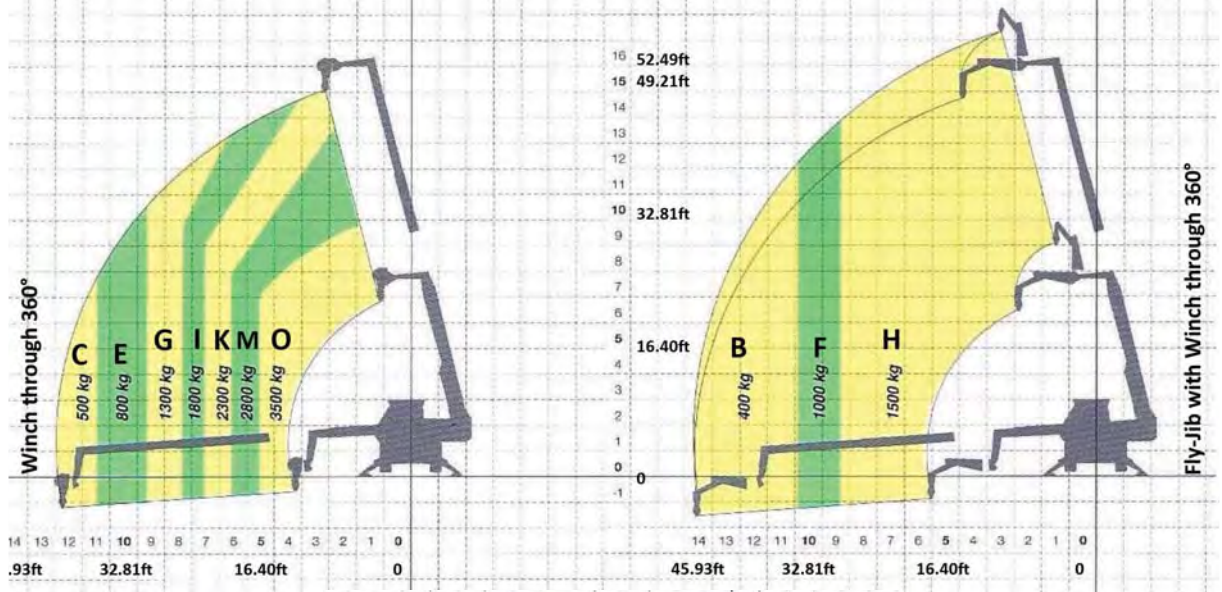
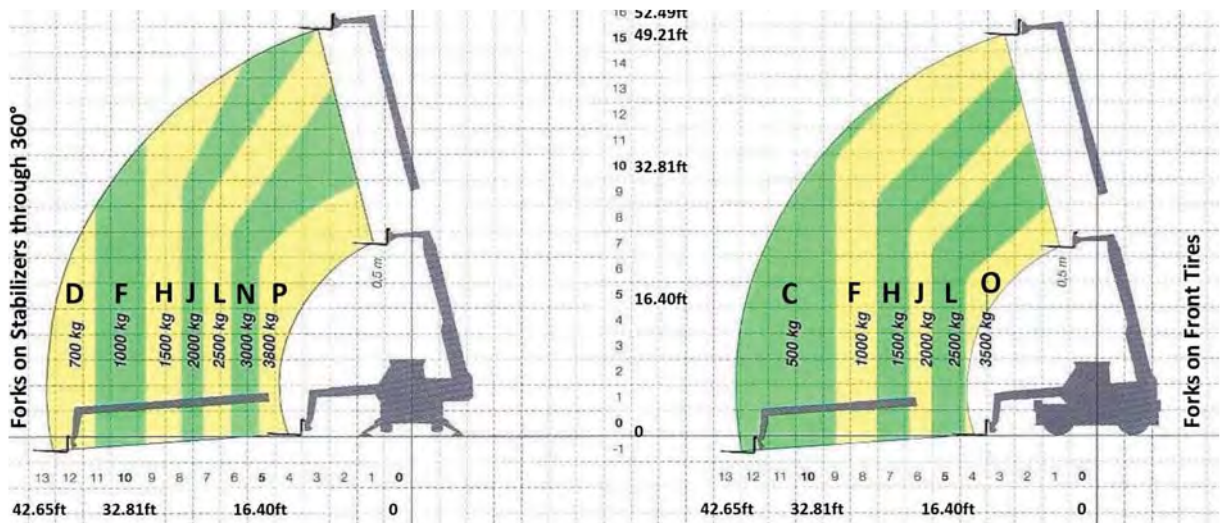
Performance figures refer to the machine equipped with forks, operating on stabilizers.

(1) Measured at suspension mid-point. (2) ±208° with reference to the longitudinal axis of the machine. (3) Stabilizing and leveling can be performed automatically.

(4) S version only. Basic model has no hydropneumatic suspension. (5) ZM2 version front tool holder.
• Standard ◦ Optional

Dimensions (FT)

A	20'-5"	F	1'-1" (1)	M	3'-3"	R	13'-3"
C	9'-1"	H	7'-3"	N	7'-3"	S	19'-7"
E	15'-2"	L	12'-3"	P	9'-4"		



Load Charts (LBS):

A	660	D	1,550	G	2,860	J	4,400	M	6,200	P	8,400
B	880	E	1,760	H	3,300	K	5,100	N	6,600		
C	1,100	F	2,200	I	4,000	L	5,500	O	7,700		

Attachments:

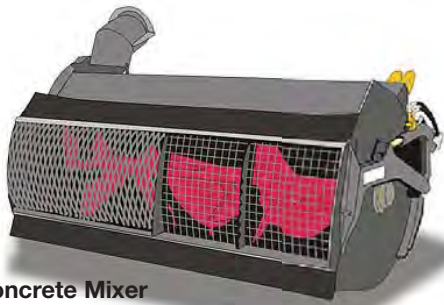
- » Space System
- » Tunnel Ring
- » Variable Width Man Baskets
- » Crane Booms
- » Crane Hooks
- » Fly Jibs
- » Fly Jibs with Winches
- » Mini Tower Jibs
- » Hydraulic Winches
- » Material Handling Buckets
- » Digging Buckets
- » Fixed Platforms
- » Concrete Mixer
- » Pipe Handlers



Variable Width Man Basket



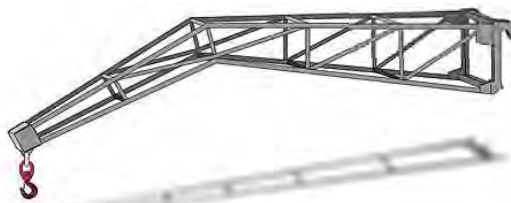
Mini Tower Jib



Concrete Mixer



Floating Forks Carriage



Fly Jib Lift



Space System



Hydraulic Winch