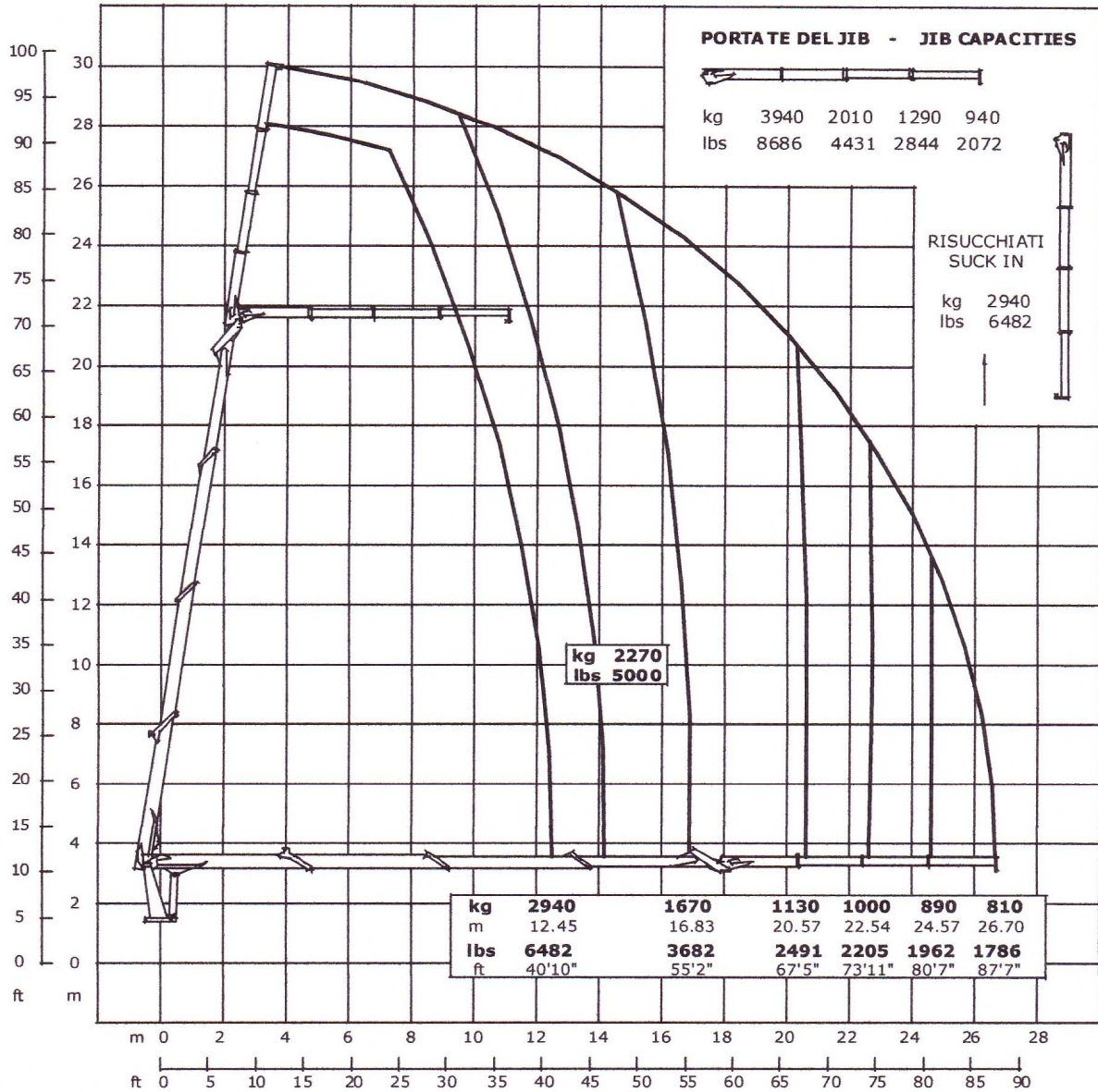




# 50000 WB 87

## DIAGRAMMA DELLE PORTATE - LIFTING CAPACITY CHART



The inner telescopic boom must be extended before extending the jib  
 The jib must be retracted before retracting the inner telescopic boom

The weight of the wallboard fork, rotator or other attachments must be deduced from the lifting capacity.  
 The drawing shows booms undeformed under load booms have deflection.  
 Data, descriptions and illustrations are given as information and are not binding  
 they are subject to change without notice.