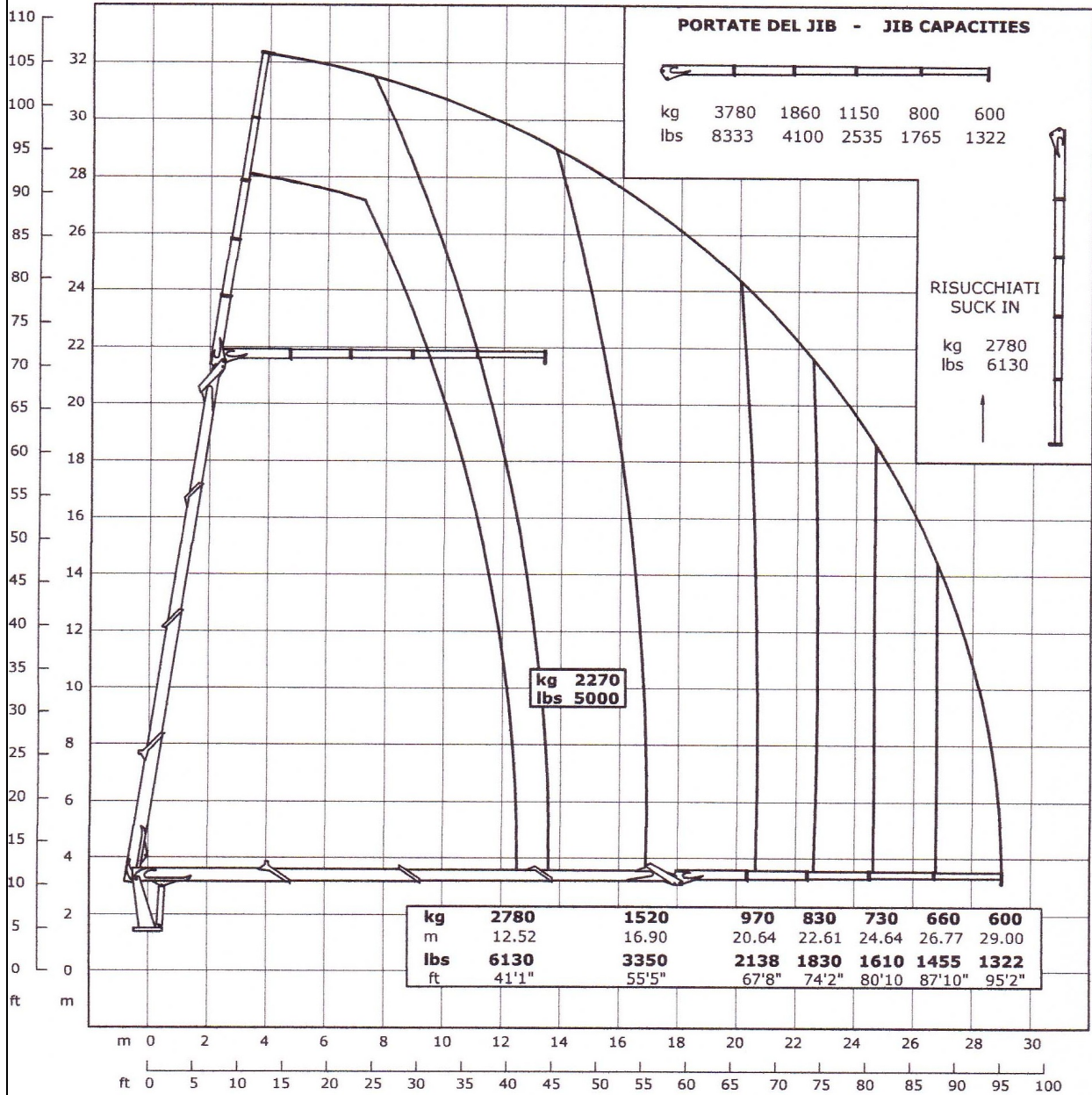




50000 WB 95

DIAGRAMMA DELLE PORTATE - LIFTING CAPACITY CHART



The inner telescopic boom must be extended before extending the jib
 The jib must be retracted before retracting the inner telescopic boom

The weight of the wallboard fork, rotator or other attachments must be deduced from the lifting capacity.
 The drawing shows booms undeformed; under load booms have deflection.
 Data, descriptions and illustrations are given as information and are not binding;
 they are subject to change without notice.