

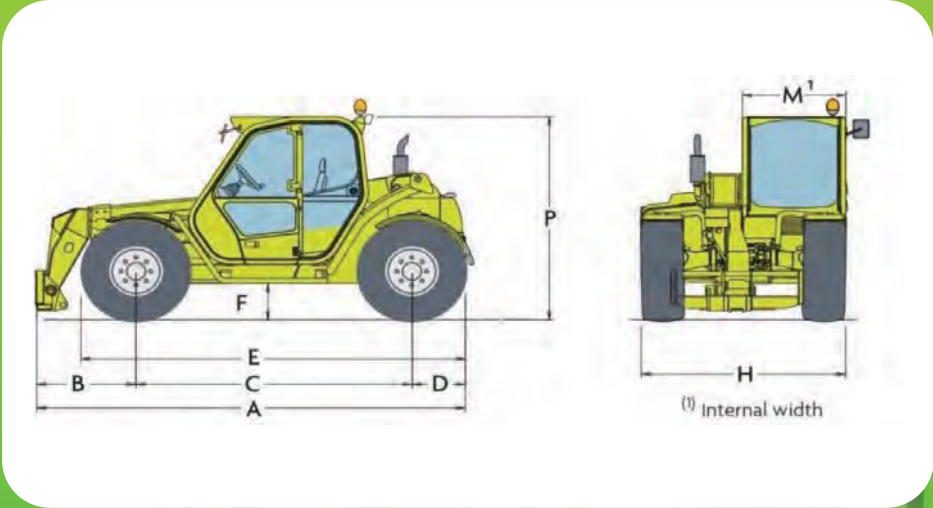
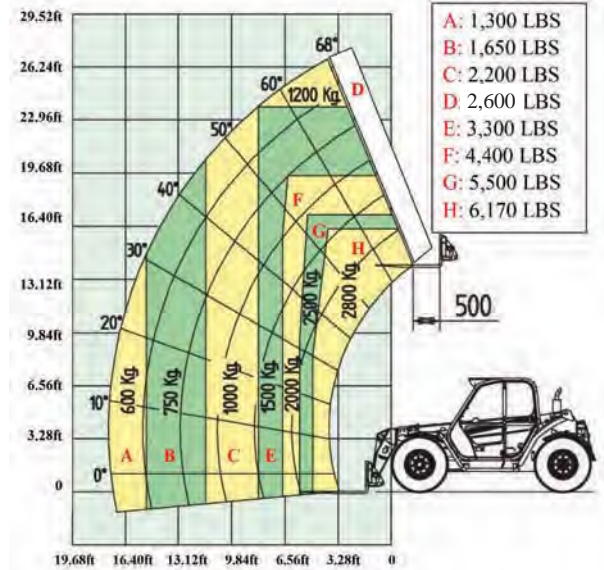
- **MAXIMUM LOAD CAPACITY: 6,170 LBS**
- **MAXIMUM LIFT HEIGHT: 26' 9"**
- **MAXIMUM REACH: 17' 3"**
- **LIFT CAPACITY AT MAXIMUM LIFT HEIGHT: 2,600 LBS**
- **LIFT CAPACITY AT MAXIMUM FORWARD REACH: 1,300 LBS**



SPECIFICATIONS: P 28.8



Power / 4 Cylinder Turbo Diesel Perkins/101HP
 Transmission 2 Speed / Hydrostatic
 Maximum Speed 15 MPH
 Total Unladen Mass (with forks) 14,100 LBS
 Hydraulic System-Gear Pump (PSI-gal / min) ... 3,050-26
 Fuel Capacity 26.4 Gallons
 Hydraulic Oil Capacity 22.4 Gallons
 Tires 405/70-20
 Turning Radius 12'-1"
 4 Wheel Drive / 3 Steering Modes Standard
 Disc Service Brakes on all 4 Wheels Standard
 Disc Parking Brake with Automatic Locking Standard
 Low Cab Height



Dimensions (FT)					
A	13'-9"	D	1'-7"	H	6'-6"
B	3'-2"	E	12'-4"	M	3'-2"
C	8'-9"	F	1'-2"	P	7'-0" / 6'-5"

DEALER INFORMATION: