



**MERLO**

## P 40.17 STABILIZERS

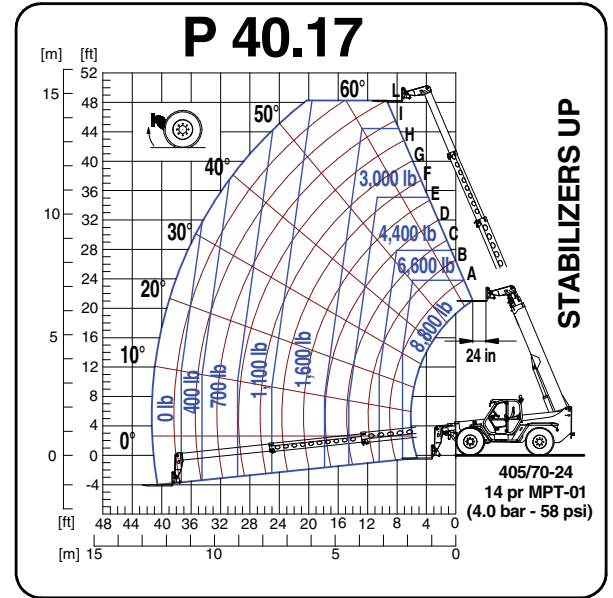
- **MAXIMUM LOAD CAPACITY: 8,800 LBS**
- **MAXIMUM LIFT HEIGHT: 55'**
- **MAXIMUM REACH: 41'**
- **LIFT CAPACITY AT MAXIMUM LIFT HEIGHT: 5,500 LBS**
- **LIFT CAPACITY AT MAXIMUM FORWARD REACH: 1,100 LBS**



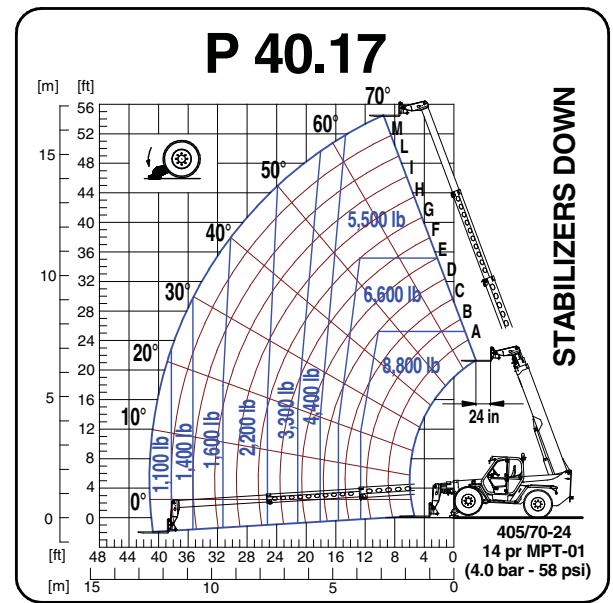
# SPECIFICATIONS: P 40.17 STABILIZERS



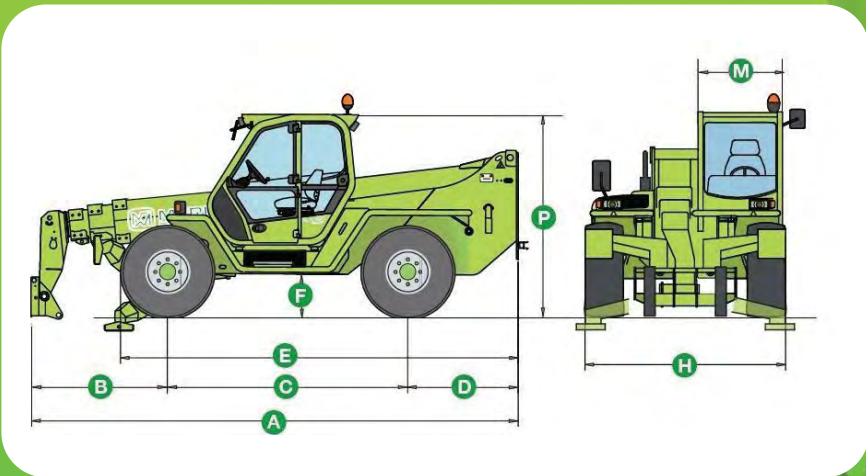
- Power / 4 Cylinder Turbo Diesel ..... Perkins/102 HP
- Transmission ..... 2 Speed / Hydrostatic
- Maximum Speed ..... 25 MPH
- Total Unladen Mass (with forks) ..... 22,800 LBS
- Boom Sideshift (Inches) ..... Standard / 17
- Frame Leveling ..... Standard / ±10%
- Load Sensing Hydraulic Pump (PSI-gal/min) ..... 3,050-30
- Fuel Capacity ..... 40 Gallons
- Hydraulic Oil Capacity ..... 37 Gallons
- Tires ..... 405/70-24
- Turning Radius ..... 13'-3"
- 4 Wheel Drive / 3 Steering Modes ..... Standard
- Hydraulic System ..... Load-sensing
- Control and Command Center ..... Electronic MERlin
- Independent Front Stabilizers ..... Standard



**REAR SIDE**



**FRONT SIDE**



Dimensions (FT)					
A	19'-0"	D	4'-3"	H	7'-9"
B	5'-0"	E	15'-8"	M	3'-3"
C	9'-4"	F	1'-6"	P	8'-3"

**DEALER INFORMATION:**