



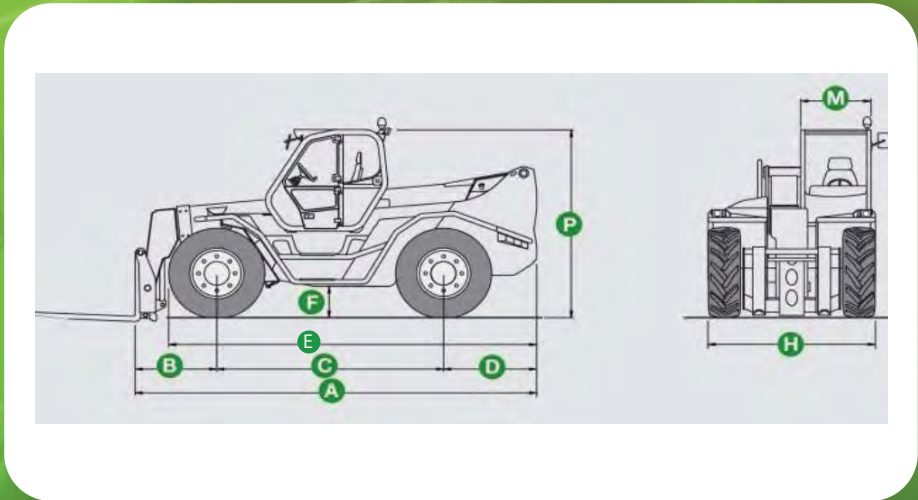
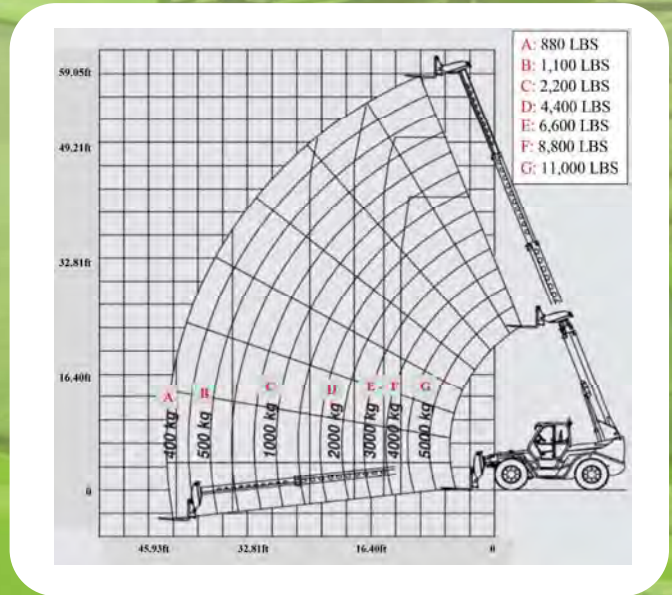
- **MAXIMUM LOAD CAPACITY: 11,000 LBS**
- **MAXIMUM LIFT HEIGHT: 58' 5"**
- **MAXIMUM REACH: 43' 3"**
- **LIFT CAPACITY AT MAXIMUM LIFT HEIGHT: 6,600 LBS**
- **LIFT CAPACITY AT MAXIMUM FORWARD REACH: 880 LBS**



# SPECIFICATIONS: P 50.18 HM



Power / 6 Cylinder Turbo Diesel ..... Iveco / 145 HP  
 Transmission ..... 2 Speed / Hydrostatic  
 Maximum Speed ..... 25 MPH  
 Total Unladen Mass (With Forks) ..... 33,951 LBS  
 Boom Sideshift ..... Standard / 1'-6"  
 Frame Leveling ..... Standard  
 Load Sensing Hydraulic Pump (PSI-gal/min) ..3,335-36  
 Fuel Capacity ..... 48.8 Gallons  
 Hydraulic Oil Capacity ..... 47.5 Gallons  
 Tires ..... 17.5-25  
 Turning Radius ..... 14'-2"  
 4 Wheel Drive / 3 Steering Modes ..... Standard  
 Control and Command System ..... Electronic MERlin



| Dimensions (FT) |        |   |        |   |        |
|-----------------|--------|---|--------|---|--------|
| A               | 20'-2" | D | 1'-6"  | H | 7'-10" |
| B               | 5'-1"  | E | 7'-10" | M | 3'-4"  |
| C               | 10'-7" | F | 1'-10" | P | 9'-5"  |

DEALER INFORMATION: