



MERLO

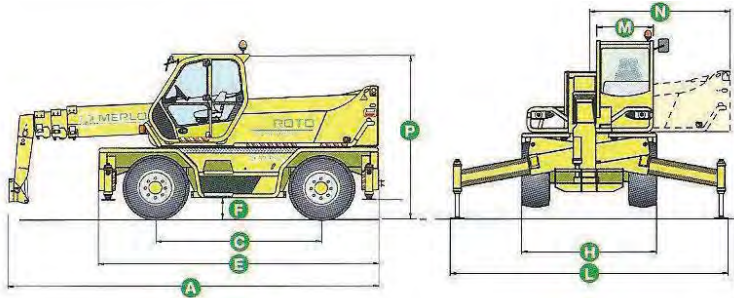
ROTO 45.21 MCSS

- MAXIMUM LOAD CAPACITY: 10,000 LBS
- MAXIMUM LIFT HEIGHT: 68' 0"
- MAXIMUM FORWARD REACH: 59' 0"
- LOAD CAPACITY AT MAXIMUM HEIGHT: 5,500 LBS



ROTO 45.21 MCSS

CHARACTERISTICS AND PERFORMANCE



- » **Continuous turret rotation** is achieved through a Merlo electro-hydraulic central rotary coupling
- » Cab steel frame that complies with the international **ISO 3449 Level II FOPS** (Falling Object Protective Structure) standard
- » **Pneumatic suspension seat**
- » **Electronic joystick controls**
- » **Steering wheel tilt** is adjustable by up to 16 degrees
- » **Merlin system** (Merlo Local Interactive Network) provides a completely new way to automatically manage all the operating parameters and safety functions
- » **MCSS system** (Merlin Continuous Slew Safety) adjusts automatically to the load diagram to suit the stabilizer position chosen by the operator
- » **Stabilizers** with independent extension and jacking
- » **Hydropneumatic suspension** ensures maximum driving comfort and stability by leveling the machine
- » **Iveco turbo intercooler 6 cylinder engine, delivering 145HP**
- » **Hydrostatic transmission** utilizing variable displacement motor and pump
- » **Load-sensing hydraulic pump**
- » **Maximum speed: 25mph**

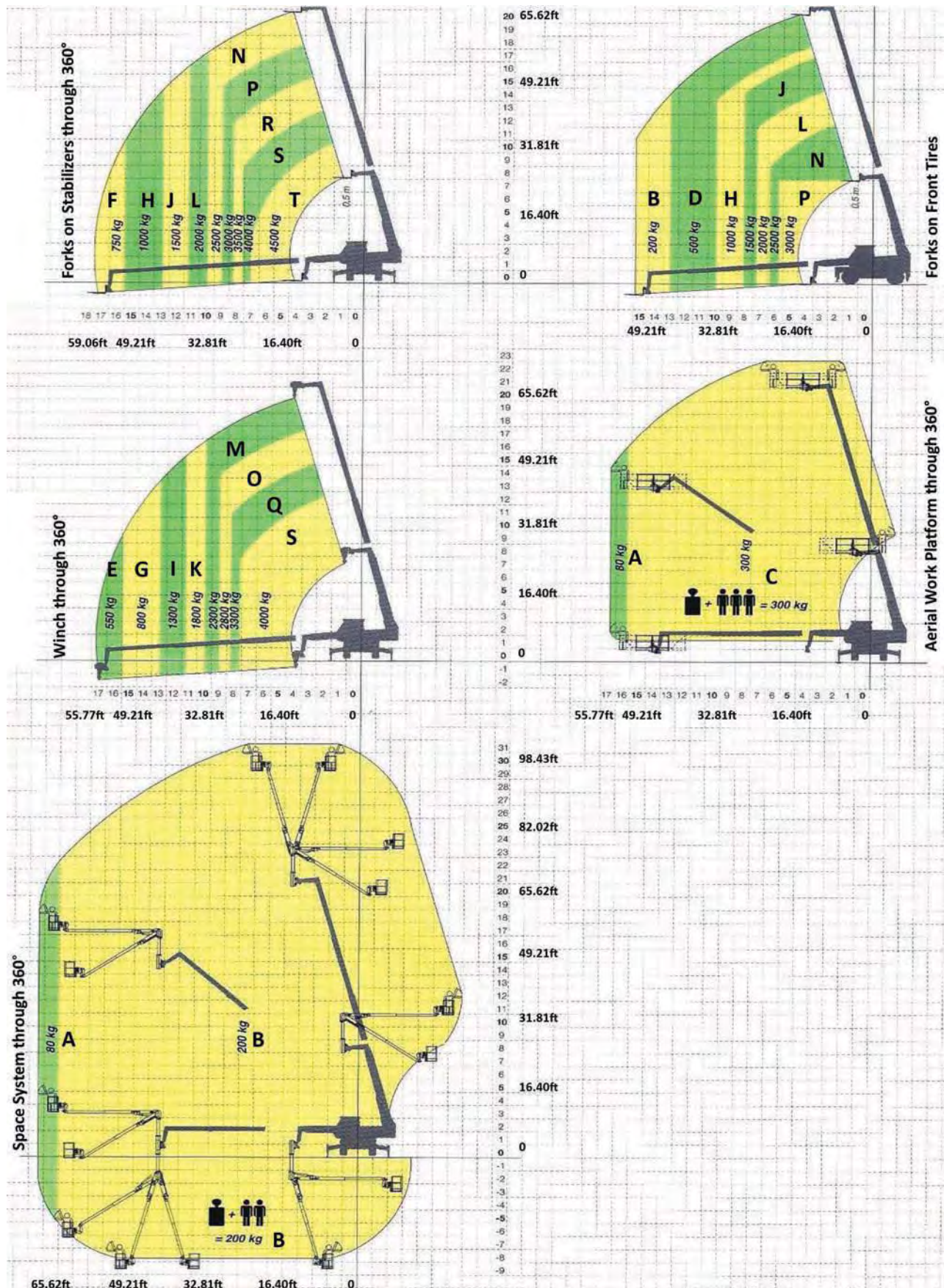
Total weight unladen, with forks (lbs.)	31,958
Maximum load capacity (lbs.)	10,000(2)
Maximum Lift height (ft.)	68'-2"(2)
Maximum forward reach (ft.)	59'-0"
Lift height at maximum load capacity (ft.)	35'-0"
Forward reach at maximum load capacity (ft.)	25'-0"
Load capacity at maximum height (lbs.)	5,500
Load capacity at maximum forward reach (lbs.)	1,600
Turret rotation (degrees)	Continuous
Engine (make / cylinder/ HP)	Iveco / 6 / 145
Fuel capacity (gal)	40
Speed in 1st gear range (mph)	10
Speed in 2nd gear range (mph)	25
Load sensing hydraulic system (PSI-gal/min)	3,480-29
Hydraulic oil capacity (gal)	42
Electrical circuit (V)	12
Battery (Ah)	160
Hydraulically controlled stabilizers	•
Hydropneumatic suspension	•
Cab compliant with FOPS standards	•
Tilting cab	-
Merlin electronic control system	•
Electro-mechanical joystick controls	-
Electronic joystick controls	•
Tac-Lock attachment coupling	•(3)
Auxiliary boom hydraulic service	•
Two floating forks (48 inches long)	•
Hydrostatic transmission	•
Hydrostatic oil capacity (gal)	3.1
Finger-Touch direction reversing control	•
Permanent four-wheel drive	•
Four wheel steering	•
Service disk brakes on all wheels	•
Automatically locking parking brake	•
Tires	18/65-22.5
Radio remote control	◦
Pneumatic seat	•
Rear differential lock	◦
Four cab working lights (2 front & 2 back)	◦
Manual air conditioning system	◦
Roof window wiper	◦
Manual battery isolator	◦
Front and roof sun shade	◦

Performance figures refer to the machine equipped with forks, operating on stabilizers.

- (1) Measured at suspension mid-point. (2) Tower-Jib version with max. capacity of 1,764lbs and max height of 104ft
 (3) ZM2 version front tool holder
 • Standard ◦ Optional

Dimensions (FT)

A	21'-6"	F	1'-1"(1)	M	3'-3"	R	13'-3"
C	9'-7"	H	7'-9"	N	8'-2"	S	21'-6"
E	16'-5"	L	16'-2"	P	9'-8"		



Load Charts (LBS):

A	180	E	1,200	I	2,860	M	5,100	Q	7,300
B	440	F	1,650	J	3,300	N	5,500	R	7,700
C	660	G	1,760	K	4,000	O	6,200	S	8,800
D	1,100	H	2,200	L	4,400	P	6,600	T	10,000

Attachments:

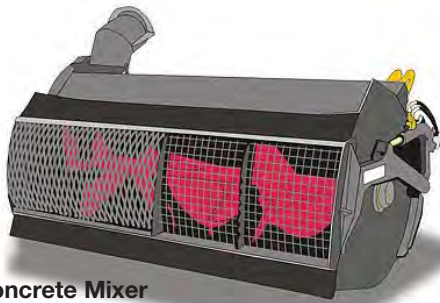
- » Space System
- » Tunnel Ring
- » Variable Width Man Baskets
- » Crane Booms
- » Crane Hooks
- » Fly Jibs
- » Fly Jibs with Winches
- » Mini Tower Jibs
- » Hydraulic Winches
- » Material Handling Buckets
- » Digging Buckets
- » Fixed Platforms
- » Concrete Mixer
- » Pipe Handlers



Variable Width Man Basket



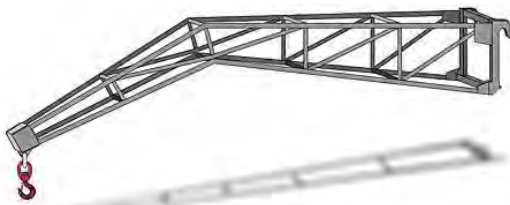
Mini Tower Jib



Concrete Mixer



Floating Forks Carriage



Fly Jib Lift



Space System



Hydraulic Winch