



MERLO

Roto 50.35 S Plus

- Lift 115'
- Lift Max. Cap. 5,000 lbs.
- Reach 96'
- Reach Max. Cap. 1,100 lbs.
- Maximum Load Capacity 11,000 lbs.
- 20° Tilting Cab



PERFORMANCE AND FEATURES ROTO50.35SPlus

PERFORMANCE

Unladen weight (lb)	50700
Maximum load capacity (lb)	11000
Lift height (ft)	115'
Maximum reach (ft)	96'
Load capacity at max. lift height (lb)	5000
Load capacity at max. reach (lb)	1100
Boom side-shift (in)	-
Frame levelling (%)	±10 - ±5
Boom section	5

POWERTRAIN

Engine	FPT
Range/Cylinders	4,5/4
Engine power (kW/HP)	125/170
Anti-pollution technology	Tier 4f - SCR + DOC
Reversible Fan	-
Maximum speed (mph)	25
Fuel tank capacity (gal)	37
AdBlue tank capacity (gal)	11
Hydrostatic transmission	CVTronic
EPD	P
Axles	Axial
Reducers	Epicyclic
Brakes	Wet discs

HYDRAULIC

Hydraulic pump	LS + FS
Delivery / pressure (psi-gal/min)	3770 - 42+26
Hydraulic oil tank capacity (gal)	52,8
Auxiliary hydraulic service on boom	P
Rear service line	-

CAB

Cab finishing	PREMIUM
MCDC	P
FOPS II Cab	P
ROPS Cab	P
Controls	Electronic joystick control

PERFORMANCE AND FEATURES ROTO50.35SPlus

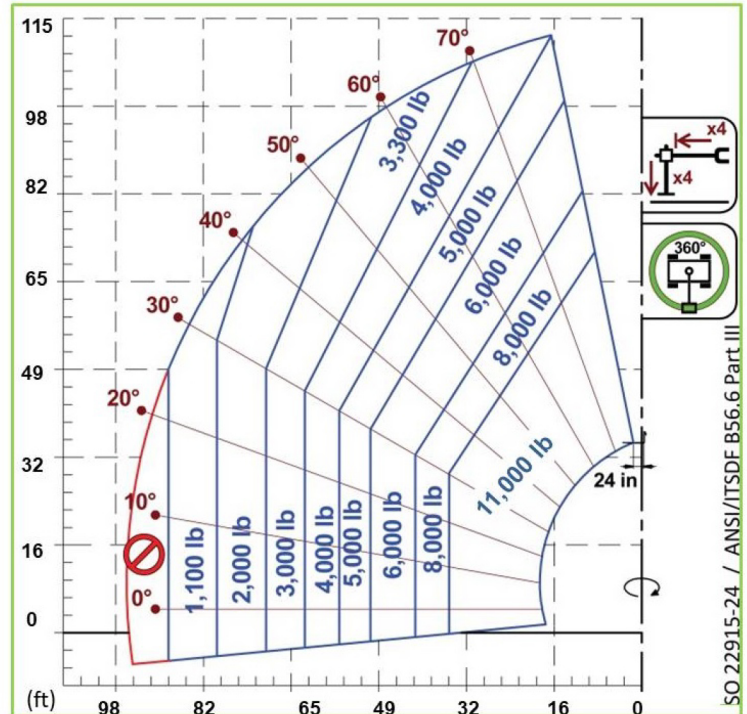
CONFIGURATION

Hydropneumatic Suspension CS Merlo	-
Hydropneumatic Suspension BSS Merlo	p
Hydropneumatic Suspension EAS Merlo	P
Work lights on cab	P
Sun-shade in the cab	P
Tac-lock	P
Pre-arrangement for aerial work platform	P
Two floating forks	P
Pedal Inching-Control	-
Permanent four-wheel drive	P
All wheel steering	P
Three steering way	P
Standard tyres	445/80 R 25
Hydraulically controlled stabilizers	Multiposition
Turret rotation	360°
Tractor type approval	-
PTO	-
3-point rear linkage	-

DIMENSION

Width (ft)	8'2"
Height (ft)	10'11"
Length (ft)	28'1"
Wheelbase(ft)	12'5"

- Not Available. P standard. p optional.



**CONTACT ROB MARCHESI FOR INFO
(201) 481-0202**

GSEECRANE.COM