



An Oshkosh Corporation Company

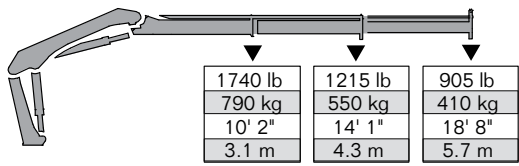


ARTICULATING CRANE

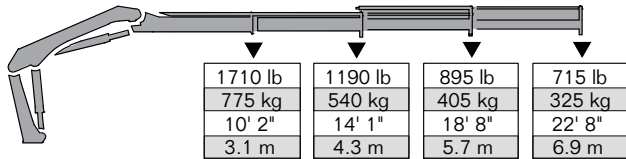
2018 Catalog

2.5/18 LIFTING CAPACITIES

2.5/18 - 2 Hydraulic



2.5/18 - 3 Hydraulic



Note: Crane appearance subject to change.

SPECIFICATIONS

Stabilizer Pad Diameter	5.5" (140 mm)
Crane Storage Height	5' (1524 mm)
Mounting Space	1' 9" (533 mm)
Rotational Torque	2820 ft-lb (390 kgm)
Rotation	370°
Optimum Pump Performance	3.2 gpm (12 L/min)
System Pressure	2755 psi (190 bar)
Oil Reservoir Capacity	3.96 gal (15 L)
Stabilizer Extension Span	
Standard	9' 10" (2997 mm)
Weight (manual out/manual down)	130 lb (59 kg)
Wide	12' 10" (3912 mm)
Weight (manual out/manual down)	130 lb (59 kg)

MINIMUM CHASSIS SPECIFICATIONS

Front Axle Rating (GAWR)	5000 lb
Rear Axle Rating (GAWR)	7000 lb
Resistance to Bending Moment Minimum	270,000 in-lb

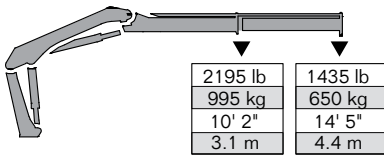
2.5/18 SPECIFICATIONS

	2 - Hydraulic	3 - Hydraulic
Crane Rating*	18,085 ft-lb (2.5 tm)	17,360 ft-lb (2.4 tm)
Max Horizontal Reach	18' 4" (5.6 m)	23' (7 m)
Max Vertical Reach	23' 10" (7.3 m)	28' 1" (8.6 m)
Max Capacity	1740 lb (790 kg)	1710 lb (775 kg)
Max Cap @ Max Reach	905 lb (410 kg)	715 lb (325 kg)
Crane Weight (Standard) **	850 lb (386 kg)	930 lb (421 kg)
Crane Weight (Wide) **	895 lb (405 kg)	970 lb (440 kg)
Hook Approach		
Vertical	6' 10" (2.08 m)	6' 7" (2.01 m)
Horizontal	3' 1" (0.94 m)	3' 3" (1 m)
Center of Gravity - Stored		
Vertical	1' 6" (465 mm)	1' 7" (475 mm)
Horizontal (C/L Rotation to Bridge)	9.6" (245 mm)	9.6" (245 mm)

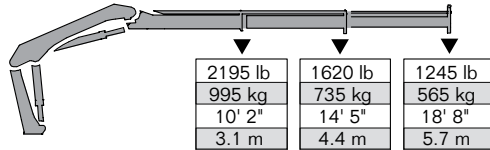
* Crane rating (ft-lb) is the rated load (lb) multiplied by the respective distance (ft) from centerline of rotation with all extensions retracted and the inner and outer booms in a horizontal position, per ANSI B30.22. ** Crane weight does not include stabilizers.

3.2/23 LIFTING CAPACITIES

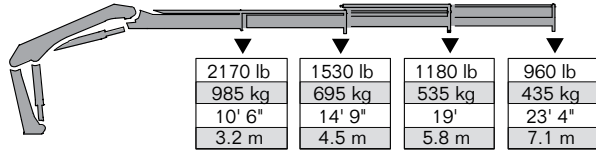
3.2/23 - 1 Hydraulic



3.2/23 - 2 Hydraulic



3.2/23 - 3 Hydraulic



Note: Crane appearance subject to change.

SPECIFICATIONS

Stabilizer Pad Diameter	5.5" (140 mm)
Crane Storage Height	5' 2" (1574 mm)
Mounting Space	1' 8" (508 mm)
Rotational Torque	3980 ft-lb (550 kgm)
Rotation	370°
Optimum Pump Performance	4 gpm (15 L/min)
System Pressure	3190 psi (220 bar)
Oil Reservoir Capacity	5.3 gal (20 L)
Stabilizer Extension Span	
Standard	10' 10" (3302 mm)
Weight (manual out/manual down)	160 lb (72 kg)
Wide	12' 10" (3912 mm)
Weight (manual out/manual down)	160 lb (72 kg)

MINIMUM CHASSIS SPECIFICATIONS

Front Axle Rating (GAWR)	5000 lb
Rear Axle Rating (GAWR)	9000 lb
Resistance to Bending Moment Minimum	345,000 in-lb

3.2/23 SPECIFICATIONS

	1 - Hydraulic	2 - Hydraulic	3 - Hydraulic
Crane Rating*	23,145 ft-lb (3.2 tm)	23,145 ft-lb (3.2 tm)	23,145 ft-lb (3.2 tm)
Max Horizontal Reach	14' 5" (4.4 m)	19' (5.8 m)	23' 7" (7.2 m)
Max Vertical Reach	20' 2" (6.2 m)	24' 7" (7.5 m)	29' 3" (8.9 m)
Max Capacity	2195 lb (995 kg)	2195 lb (995 kg)	2170 lb (985 kg)
Max Cap @ Max Reach	1435 lb (650 kg)	1245 lb (565 kg)	960 lb (435 kg)
Crane Weight **	920 lb (418 kg)	1030 lb (468 kg)	1120 lb (508 kg)
Hook Approach			
Vertical	8' (2.45 m)	7' 7" (2.32 m)	7' 2" (2.18 m)
Horizontal	2' 11" (0.89 m)	3' 1" (0.94 m)	3' 3" (1 m)
Center of Gravity - Stored			
Vertical	1' 7" (470 mm)	25" (635 mm)	1' 8" (500 mm)
Horizontal	10" (255 mm)	10.5" (266.7 mm)	9.4" (240 mm)
(C/L Rotation to Bridge)			

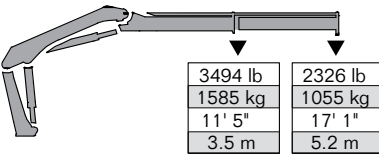
* Crane rating (ft-lb) is the rated load (lb) multiplied by the respective distance (ft) from centerline of rotation with all extensions retracted and the inner and outer booms in a horizontal position, per ANSI B30.22. ** Crane weight does not include stabilizers.

> 610K-MC

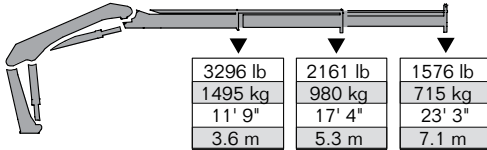
Articulating Crane Technical Specifications

610K-MC LIFTING CAPACITIES

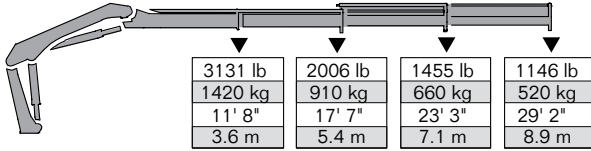
610K-MC - 1 Hydraulic



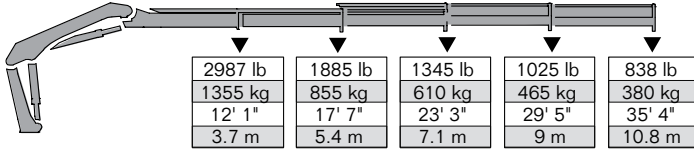
610K-MC - 2 Hydraulic



610K-MC - 3 Hydraulic



610K-MC - 4 Hydraulic



MINIMUM CHASSIS SPECIFICATIONS

Front Axle Rating (GAWR)	6000 lb
Rear Axle Rating (GAWR)	12,460 lb
Resistance to Bending Moment Minimum	585,000 in-lb



Note: Crane appearance subject to change.

SPECIFICATIONS

Stabilizer Pad Diameter	5.44" (138 mm)
Crane Storage Height	6' 2" (1880 mm)
Mounting Space***	2' 2" (660 mm)
Rotational Torque	5877 ft-lb (0.9 tm)
Rotation	400°
Optimum Pump Performance	6.6 gpm (25 L/min)
System Pressure	4351 psi (300 bar)
Oil Reservoir Capacity	14.5 gal (55 L)
Stabilizer Extension Span	
Standard - Stabilizers, S1 Fixed	11' 2" (3404 mm)
Option 1 - Stabilizers, S2 Fixed	14' 5" (4394 mm)
Option 2 - Stabilizers, D Fixed	17' 1" (5207 mm)

610K-MC SPECIFICATIONS

	1 - Hydraulic	2 - Hydraulic	3 - Hydraulic	4 - Hydraulic
Crane Rating*	39,771 ft-lb (5.5 tm)	39,048 ft-lb (5.4 tm)	36,879 ft-lb (5.1 tm)	36,155 ft-lb (5 tm)
Max Horizontal Reach	17' 1" (5.2 m)	23' 3" (7.1 m)	29' 1" (8.9 m)	35' 4" (10.8 m)
Max Vertical Reach	19' 9" (6 m)	28' 4" (8.6 m)	34' 2" (10.4 m)	43' 11" (13.4 m)
Max Capacity	5986 lb (2715 kg)	5809 lb (2635 kg)	5666 lb (2570 kg)	5556 lb (2520 kg)
Max Cap @ Max Reach	2326 lb (1055 kg)	1576 lb (715 kg)	1146 lb (520 kg)	838 lb (380 kg)
Crane Weight **	1389 lb (630 kg)	1554 lb (705 kg)	1708 lb (775 kg)	1841 lb (835 kg)
Hook Approach				
Vertical	11' 11" (3655 mm)	12' (3670 mm)	12' 1" (3685 mm)	12' 1.6" (3700 mm)
Horizontal	5' 1" (1565 mm)	5' 4" (1635 mm)	5' 7" (1705 mm)	5' 9" (1775 m)
Center of Gravity - Stored				
Vertical	1' 11" (590 mm)	2' (620 mm)	2' 1" (650 mm)	2' 2" (670 mm)
Horizontal	1' 2" (355 mm)	1' 2" (355 mm)	1' 1.5" (345 mm)	1' 1" (335 mm)
(C/L Rotation to Bridge)				

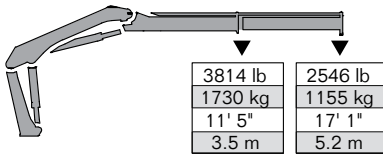
* Crane rating (ft-lb) is the rated load (lb) multiplied by the respective distance (ft) from centerline of rotation with all extensions retracted and the inner and outer booms in a horizontal position, per ANSI B30.22. ** Crane weight does not include stabilizers. ***Maximum swing clearance radius required is 20.5" (516 mm) at 6' 9" (2055 mm) from top of chassis frame.

> 610K-MCS/RC

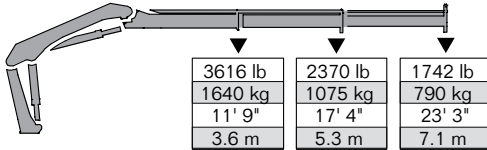
Articulating Crane Technical Specifications

610K-MCS/RC LIFTING CAPACITIES

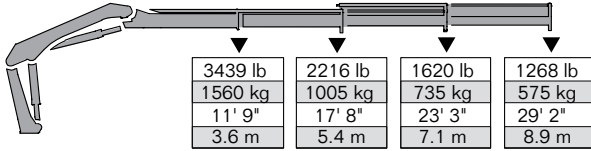
610K-MCS/RC - 1 Hydraulic



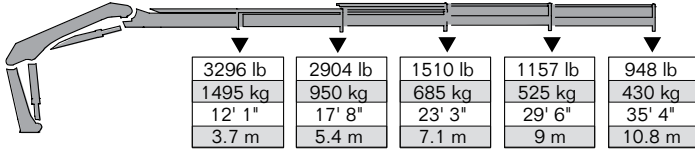
610K-MCS/RC - 2 Hydraulic



610K-MCS/RC - 3 Hydraulic



610K-MCS/RC - 4 Hydraulic



MINIMUM CHASSIS SPECIFICATIONS

Front Axle Rating (GAWR)	6000 lb
Rear Axle Rating (GAWR)	12,460 lb
Resistance to Bending Moment Minimum	585,000 in-lb



Note: Crane appearance subject to change.

SPECIFICATIONS

Stabilizer Pad Diameter	5.44" (138 mm)
Crane Storage Height	6' 2" (1880 mm)
Mounting Space***	2' 2" (660 mm)
Rotational Torque	5900 ft-lb (0.9 tm)
Rotation	400°
Optimum Pump Performance	6.6 gpm (25 L/min)
System Pressure	4714 psi (325 bar)
Oil Reservoir Capacity	14.5 gal (55 L)
Stabilizer Extension Span	
Standard - Stabilizers, S1 Fixed	11' 2" (3404 mm)
Option 1 - Stabilizers, S2 Fixed	14' 5" (4394 mm)
Option 2 - Stabilizers, D Fixed	17' 1" (5207 mm)

610K-MCS/RC SPECIFICATIONS

	1 - Hydraulic	2 - Hydraulic	3 - Hydraulic	4 - Hydraulic
Crane Rating*	39,370 ft-lb (6 tm)	38,713 ft-lb (5.9 tm)	36,745 ft-lb (5.6 tm)	36,089 ft-lb (5.5 tm)
Max Horizontal Reach	17' 1" (5.2 m)	23' 3" (7.1 m)	29' 1" (8.9 m)	35' 4" (10.8 m)
Max Vertical Reach	19' 9" (6 m)	28' 4" (8.6 m)	34' 2" (10.4 m)	43' 11" (13.4 m)
Max Capacity	6526 lb (2960 kg)	6360 lb (2885 kg)	6206 lb (2815 kg)	6107 lb (2770 kg)
Max Cap @ Max Reach	2546 lb (1155 kg)	1742 lb (790 kg)	1268 lb (575 kg)	948 lb (430 kg)
Crane Weight **	1389 lb (630 kg)	1554 lb (705 kg)	1708 lb (775 kg)	1841 lb (835 kg)
Hook Approach				
Vertical	11' 11" (3655 mm)	12' (3670 mm)	12' 1" (3685 mm)	12' 1.6" (3700 mm)
Horizontal	5' 1" (1565 mm)	5' 4" (1635 mm)	5' 7" (1705 mm)	5' 9" (1775 mm)
Center of Gravity - Stored				
Vertical	1' 11" (590 mm)	2' (620 mm)	2' 1" (650 mm)	2' 2" (670 mm)
Horizontal	1' 2" (355 mm)	1' 2" (355 mm)	1' 1.5" (345 mm)	1' 1" (335 mm)
(C/L Rotation to Bridge)				

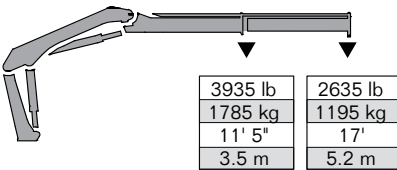
* Crane rating (ft-lb) is the rated load (lb) multiplied by the respective distance (ft) from centerline of rotation with all extensions retracted and the inner and outer booms in a horizontal position, per ANSI B30.22. ** Crane weight does not include stabilizers. ***Maximum swing clearance radius required is 20.5" (516 mm) at 6' 9" (2055 mm) from top of chassis frame.

> 710K-RCS

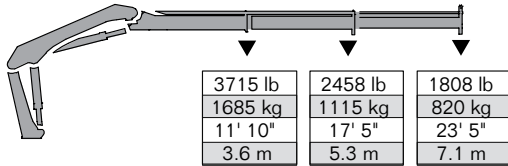
Articulating Crane Technical Specifications

710K-RCS LIFTING CAPACITIES

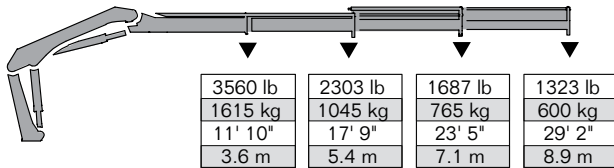
710K-RCS - 1 Hydraulic



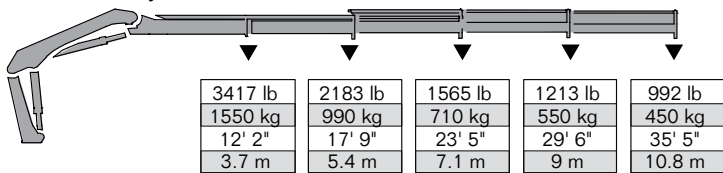
710K-RCS - 2 Hydraulic



710K-RCS - 3 Hydraulic



710K-RCS - 4 Hydraulic



Note: Crane appearance subject to change.

SPECIFICATIONS

Stabilizer Pad Diameter	5.44" (138 mm)
Crane Storage Height	6' 2" (1880 mm)
Mounting Space***	2' 2" (660 mm)
Rotational Torque	5900 ft-lb (0.9 tm)
Rotation	400°
Optimum Pump Performance	
Fixed	10.56 gpm (40 L/min)
Variable	15.8 gpm (60 L/min)
System Pressure	4859 psi (335 bar)
Oil Reservoir Capacity	14.5 gal (55 L)
Stabilizer Extension Span	
Standard - Stabilizers, S1 Fixed	11' 2" (3404 mm)
Option 1 - Stabilizers, S2 Fixed	14' 5" (4394 mm)
Option 2 - Stabilizers, D Fixed	17' 1" (5207 mm)

MINIMUM CHASSIS SPECIFICATIONS

Front Axle Rating (GAWR)	6000 lb
Rear Axle Rating (GAWR)	12,460 lb
Resistance to Bending Moment Minimum	675,000 in-lb

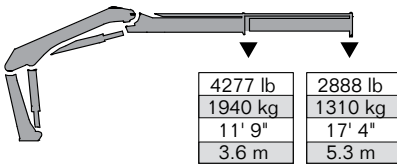
710K-RCS SPECIFICATIONS

	1 - Hydraulic	2 - Hydraulic	3 - Hydraulic	4 - Hydraulic
Crane Rating*	45,180 ft-lb (6.3 tm)	43,749 ft-lb (6.1 tm)	41,597 ft-lb (5.8 tm)	40,880 ft-lb (5.7 tm)
Max Horizontal Reach	17' 1" (5.2 m)	23' 4" (7.1 m)	29' 2" (8.9 m)	35' 5" (10.8 m)
Max Vertical Reach	19' 9" (6 m)	28' 4" (8.6 m)	34' 2" (10.4 m)	43' 11" (13.4 m)
Max Capacity	6746 lb (3060 kg)	6570 lb (2980 kg)	6426 lb (2915 kg)	6316 lb (2865 kg)
Max Cap @ Max Reach	2635 lb (1195 kg)	1808 lb (820 kg)	1323 lb (600 kg)	992 lb (450 kg)
Crane Weight **	1389 lb (630 kg)	1554 lb (705 kg)	1708 lb (775 kg)	1841 lb (835 kg)
Hook Approach				
Vertical	11' 11" (3655 mm)	12' (3670 mm)	12' 1" (3685 mm)	12' 1.6" (3700 mm)
Horizontal	5' 1" (1565 mm)	5' 4" (1635 mm)	5' 7" (1705 mm)	5' 9" (1775 mm)
Center of Gravity - Stored				
Vertical	1' 11" (590 mm)	2' (620 mm)	2' 1" (650 mm)	2' 2" (670 mm)
Horizontal	1' 2" (355 mm)	1' 2" (355 mm)	1' 1.5" (345 mm)	1' 1" (335 mm)
(C/L Rotation to Bridge)				

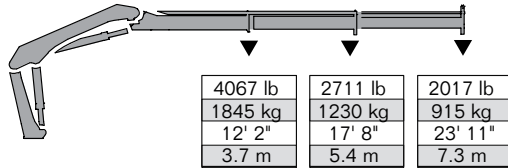
* Crane rating (ft-lb) is the rated load (lb) multiplied by the respective distance (ft) from centerline of rotation with all extensions retracted and the inner and outer booms in a horizontal position, per ANSI B30.22. ** Crane weight does not include stabilizers. ***Maximum swing clearance radius required is 20.5" (516 mm) at 6' 9" (2055 mm) from top of chassis frame.

810K-MC LIFTING CAPACITIES

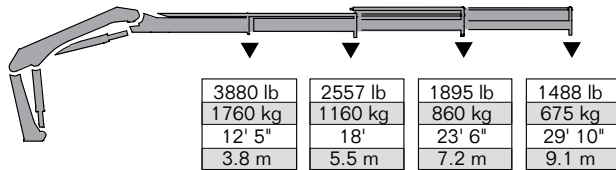
810K-MC - 1 Hydraulic



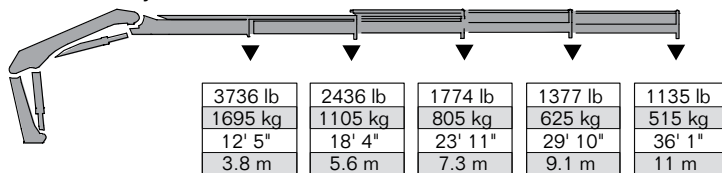
810K-MC - 2 Hydraulic



810K-MC - 3 Hydraulic



810K-MC - 4 Hydraulic



MINIMUM CHASSIS SPECIFICATIONS

Front Axle Rating (GAWR)	6000 lb
Rear Axle Rating (GAWR)	12,460 lb
Resistance to Bending Moment Minimum	750,000 in-lb



Note: Crane appearance subject to change.

SPECIFICATIONS

Stabilizer Pad Diameter	5.44" (138 mm)
Crane Storage Height	6' 2" (1880 mm)
Mounting Space***	2' 2" (660 mm)
Rotational Torque	5900 ft-lb (0.9 tm)
Rotation	400°
Optimum Pump Performance	9.25 gpm (35 L/min)
System Pressure	4351 psi (300 bar)
Oil Reservoir Capacity	14.5 gal (55 L)
Stabilizer Extension Span	
Standard - Stabilizers, S1 Fixed	11' 2" (3404 mm)
Option 1 - Stabilizers, S2 Fixed	14' 5" (4394 mm)
Option 2 - Stabilizers, D Fixed	17' 1" (5207 mm)

810K-MC SPECIFICATIONS

	1 - Hydraulic	2 - Hydraulic	3 - Hydraulic	4 - Hydraulic
Crane Rating*	50,527 ft-lb (7 tm)	49,083 ft-lb (6.8 tm)	48,361 ft-lb (6.7 tm)	46,196 ft-lb (6.4 tm)
Max Horizontal Reach	17' 4" (5.3 m)	23' 11" (7.3 m)	29' 10" (9.1 m)	36' 1" (11 m)
Max Vertical Reach	20' (6.1 m)	28' 4" (8.6 m)	35' 4" (10.8 m)	42' 5" (12.9 m)
Max Capacity	7562 lb (3430 kg)	7826 lb (3550 kg)	7231 lb (3280 kg)	7120 lb (3230 kg)
Max Cap @ Max Reach	2954 lb (1310 kg)	2017 lb (915 kg)	1488 lb (675 kg)	1135 lb (515 kg)
Crane Weight **	1466 lb (665 kg)	1631 lb (740 kg)	1785 lb (810 kg)	1918 lb (870 kg)
Hook Approach				
Vertical	12' 8" (3870 mm)	12' 9" (3885 mm)	12' 9.5" (3900 mm)	12' 10" (3915 mm)
Horizontal	5' 1" (1555 mm)	5' 4" (1625 mm)	5' 7" (1695 m)	5' 9" (1765 mm)
Center of Gravity - Stored				
Vertical	2' 1" (645 mm)	2' 2" (665 mm)	2' 3" (685 mm)	2' 3" (700 mm)
Horizontal	1' 2" (360 mm)	1' 2" (370 mm)	1' 1.5" (365 mm)	1' 2" (360 mm)
(C/L Rotation to Bridge)				

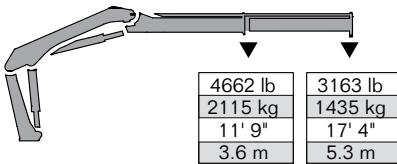
* Crane rating (ft-lb) is the rated load (lb) multiplied by the respective distance (ft) from centerline of rotation with all extensions retracted and the inner and outer booms in a horizontal position, per ANSI B30.22. ** Crane weight does not include stabilizers. ***Maximum swing clearance radius required is 20.5" (516 mm) at 6' 9" (2055 mm) from top of chassis frame.

> 810K-MCS/RC

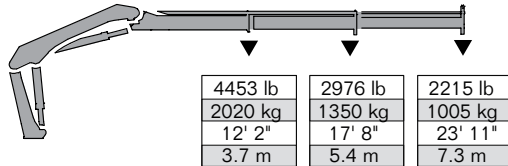
Articulating Crane Technical Specifications

810K-MCS/RC LIFTING CAPACITIES

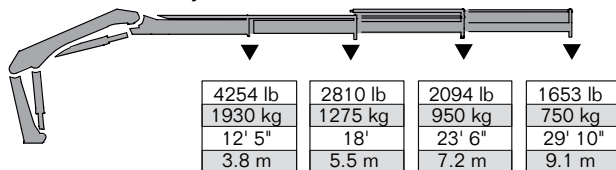
810K-MCS/RC - 1 Hydraulic



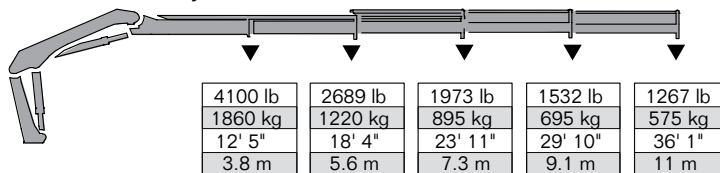
810K-MCS/RC - 2 Hydraulic



810K-MCS/RC - 3 Hydraulic



810K-MCS/RC - 4 Hydraulic



MINIMUM CHASSIS SPECIFICATIONS

Front Axle Rating (GAWR)	6000 lb
Rear Axle Rating (GAWR)	12,460 lb
Resistance to Bending Moment Minimum	810,000 in-lb



Note: Crane appearance subject to change.

SPECIFICATIONS

Stabilizer Pad Diameter	5.44" (138 mm)
Crane Storage Height	6' 2" (1880 mm)
Mounting Space***	2' 2" (660 mm)
Rotational Torque	5900 ft-lb (0.9 tm)
Rotation	400°
Optimum Pump Performance	9.25 gpm (35 L/min)
System Pressure	4714 psi (325 bar)
Oil Reservoir Capacity	14.5 gal (55 L)
Stabilizer Extension Span	
Standard - Stabilizers, S1 Fixed	11' 2" (3404 mm)
Option 1 - Stabilizers, S2 Fixed	14' 5" (4394 mm)
Option 2 - Stabilizers, D Fixed	17' 1" (5207 mm)

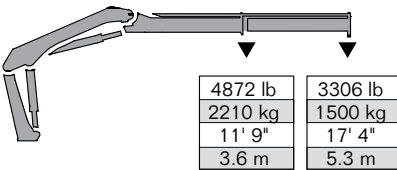
810K-MCS/RC SPECIFICATIONS

	1 - Hydraulic	2 - Hydraulic	3 - Hydraulic	4 - Hydraulic
Crane Rating*	54,858 ft-lb (7.6 tm)	54,135 ft-lb (7.5 tm)	52,692 ft-lb (7.3 tm)	51,249 ft-lb (7.1 tm)
Max Horizontal Reach	17' 4" (5.3 m)	23' 11" (7.3 m)	29' 10" (9.1 m)	36' 1" (11 m)
Max Vertical Reach	20' (6.1 m)	28' 4" (8.6 m)	35' 4" (10.8 m)	42' 5" (12.9 m)
Max Capacity	8245 lb (3740 kg)	8068 lb (3660 kg)	7914 lb (3590 kg)	7804 lb (3540 kg)
Max Cap @ Max Reach	3163 lb (1435 kg)	2215 lb (1005 kg)	1653 lb (750 kg)	1488 lb (575 kg)
Crane Weight **	1466 lb (665 kg)	1631 lb (740 kg)	1785 lb (810 kg)	1918 lb (870 kg)
Hook Approach				
Vertical	12' 8" (3870 mm)	12' 9" (3885 mm)	12' 9.5" (3900 mm)	12' 10" (3915 mm)
Horizontal	5' 1" (1555 mm)	5' 4" (1625 mm)	5' 7" (1695 m)	5' 9" (1765 mm)
Center of Gravity - Stored				
Vertical	2' 1" (645 mm)	2' 2" (665 mm)	2' 3" (685 mm)	2' 3" (700 mm)
Horizontal	1' 2" (360 mm)	1' 2" (370 mm)	1' 1.5" (365 mm)	1' 2" (360 mm)
(C/L Rotation to Bridge)				

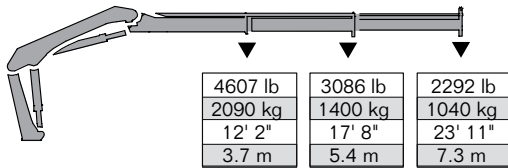
* Crane rating (ft-lb) is the rated load (lb) multiplied by the respective distance (ft) from centerline of rotation with all extensions retracted and the inner and outer booms in a horizontal position, per ANSI B30.22. ** Crane weight does not include stabilizers. ***Maximum swing clearance radius required is 20.5" (516 mm) at 6' 9" (2055 mm) from top of chassis frame.

910K-RCS LIFTING CAPACITIES

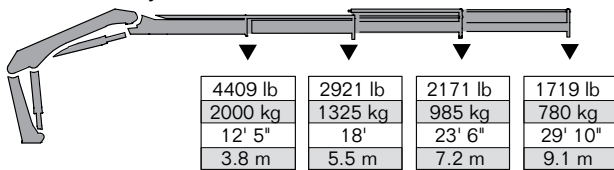
910K-RCS - 1 Hydraulic



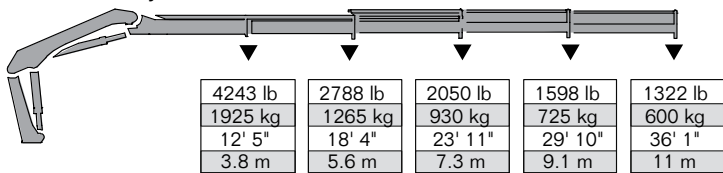
910K-RCS - 2 Hydraulic



910K-RCS - 3 Hydraulic



910K-RCS - 4 Hydraulic



Note: Crane appearance subject to change.

SPECIFICATIONS

Stabilizer Pad Diameter	5.44" (138 mm)
Crane Storage Height	6' 2" (1880 mm)
Mounting Space***	2' 2" (660 mm)
Rotational Torque	5900 ft-lb (0.9 tm)
Rotation	400°
Optimum Pump Performance	
Fixed	13.21 gpm (50 L/min)
Variable	15.8 gpm (60 L/min)
System Pressure	4859 psi (335 bar)
Oil Reservoir Capacity	14.5 gal (5.5 L)
Stabilizer Extension Span	
Standard - Stabilizers, S1 Fixed	11' 2" (3404 mm)
Option 1 - Stabilizers, S2 Fixed	14' 5" (4394 mm)
Option 2 - Stabilizers, D Fixed	17' 1" (5207 mm)

MINIMUM CHASSIS SPECIFICATIONS

Front Axle Rating (GAWR)	8000 lb
Rear Axle Rating (GAWR)	16,000 lb
Resistance to Bending Moment Minimum	870,000 in-lb

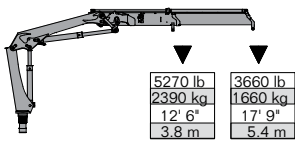
910K-RCS SPECIFICATIONS

	1 - Hydraulic	2 - Hydraulic	3 - Hydraulic	4 - Hydraulic
Crane Rating*	57,745 ft-lb (8 tm)	55,580 ft-lb (7.7 tm)	54,858 ft-lb (7.6 tm)	52,692 ft-lb (7.3 tm)
Max Horizontal Reach	17' 4" (5.3 m)	23' 11" (7.3 m)	29' 10" (9.1 m)	36' 1" (11 m)
Max Vertical Reach	20' (6.1 m)	28' 4" (8.6 m)	35' 4" (10.8 m)	42' 5" (12.9 m)
Max Capacity	8509 lb (3860 kg)	8333 lb (3780 kg)	8179 lb (3710 kg)	8068 lb (3660 kg)
Max Cap @ Max Reach	3306 lb (1500 kg)	2292 lb (1040 kg)	1719 lb (780 kg)	1984 lb (600 kg)
Crane Weight **	1389 lb (630 kg)	1554 lb (705 kg)	1708 lb (775 kg)	1841 lb (835 kg)
Hook Approach				
Vertical	12' 8" (3870 mm)	12' 9" (3885 mm)	12' 9.5" (3900 mm)	12' 10" (3915 mm)
Horizontal	5' 1" (1555 mm)	5' 4" (1625 mm)	5' 7" (1695 m)	5' 9" (1765 mm)
Center of Gravity - Stored				
Vertical	2' 1" (645 mm)	2' 2" (665 mm)	2' 3" (685 mm)	2' 3" (700 mm)
Horizontal	1' 2" (360 mm)	1' 2" (370 mm)	1' 1.5" (365 mm)	1' 2" (360 mm)
(C/L Rotation to Bridge)				

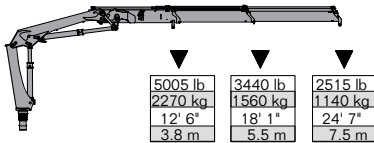
* Crane rating (ft-lb) is the rated load (lb) multiplied by the respective distance (ft) from centerline of rotation with all extensions retracted and the inner and outer booms in a horizontal position, per ANSI B30.22. ** Crane weight does not include stabilizers. ***Maximum swing clearance radius required is 20.5" (516 mm) at 6' 9" (2055 mm) from top of chassis frame.

9/65SL LIFTING CAPACITIES

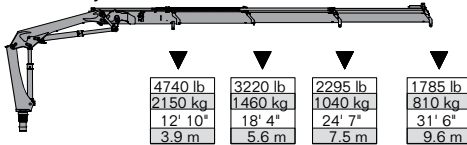
9/65SL - 1 Hydraulic



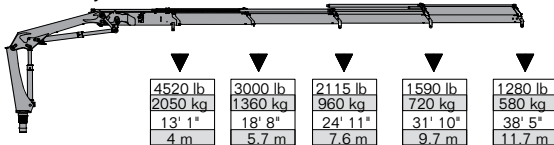
9/65SL - 2 Hydraulic



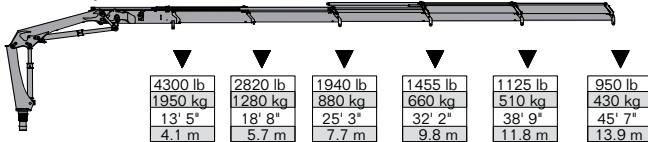
9/65SL - 3 Hydraulic



9/65SL - 4 Hydraulic



9/65SL - 5 Hydraulic



MINIMUM CHASSIS SPECIFICATIONS

Front Axle Rating (GAWR)	8000 lb
Rear Axle Rating (GAWR)	16,000 lb
Resistance to Bending Moment Minimum	976,500 in-lb



SPECIFICATIONS

Stabilizer Pad Diameter	6" (152 mm)	
Crane Storage Height	7' (2134 mm)	
Mounting Space***	2' 5" (737 mm)	
Rotational Torque	9665 ft-lb (1.3 tm)	
Rotation	420°	
Optimum Pump Performance	10.5 gpm (40 L/min)	
System Pressure	4350 psi (300 bar)	
Oil Reservoir Capacity	14.5 gal (55 L)	
Stabilizer Extension Span	Standard	
	Weight (manual out/hydraulic down fixed stabilizer)	13' 8" (4166 mm) 355 lb (160 kg)
	Weight (manual out/hydraulic down swing-up stabilizer)	365 lb (165 kg)
Extended Reach	Weight (hydraulic out/hydraulic down fixed stabilizer)	16' 10" (5131 mm) 410 lb (185 kg)
	Weight (hydraulic out/hydraulic down swing-up stabilizer)	420 lb (190 kg)

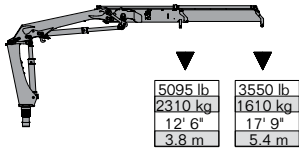
9/65SL SPECIFICATIONS

	1 - Hydraulic	2 - Hydraulic	3 - Hydraulic	4 - Hydraulic	5 - Hydraulic	
Crane Rating*	65,100 ft-lb (9 tm)	62,925 ft-lb (8.7 tm)	61,480 ft-lb (8.5 tm)	59,310 ft-lb (8.2 tm)	57,865 ft-lb (8 tm)	
Max Horizontal Reach	18' (5.5 m)	24' 7" (7.5 m)	31' 10" (9.7 m)	38' 9" (11.8 m)	45' 11" (14 m)	
Max Vertical Reach	25' 7" (7.8 m)	32' 3" (9.8 m)	39' 4" (12 m)	46' 5" (14.1 m)	53' 4" (16.3 m)	
Max Capacity	8380 lb (3800 kg)	7850 lb (3560 kg)	7630 lb (3460 kg)	7165 lb (3250 kg)	6745 lb (3060 kg)	
Max Cap @ Max Reach	3660 lb (1660 kg)	2515 lb (1140 kg)	1785 lb (810 kg)	1280 lb (580 kg)	950 lb (430 kg)	
Crane Weight **	2360 lb (1070 kg)	2590 lb (1175 kg)	2810 lb (1275 kg)	3010 lb (1365 kg)	3185 lb (1445 kg)	
Hook Approach	Vertical	9' 8" (2.9 m)	9' 4" (2.8 m)	9' 0" (2.7 m)	8' 8" (2.6 m)	8' 4" (2.5 m)
	Horizontal	2' 7" (0.8 m)	2' 9" (0.8 m)	2' 11" (0.9 m)	3' 1" (0.9 m)	3' 3" (1 m)
Center of Gravity - Stored	Vertical	24" (609.6 mm)	25" (635 mm)	26" (660.4 mm)	27" (685.8 mm)	27.7" (703.6 mm)
	Horizontal	10.6" (269.2 mm)	10.5" (266.7 mm)	10" (254 mm)	9.3" (236.2 mm)	9" (228.6 mm)
	(C/L Rotation to Bridge)					

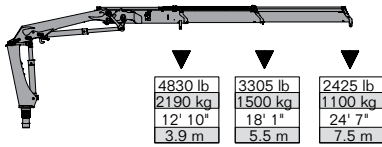
* Crane rating (ft-lb) is the rated load (lb) multiplied by the respective distance (ft) from centerline of rotation with all extensions retracted and the inner and outer booms in a horizontal position, per ANSI B30.22. ** Crane weight does not include stabilizers. ***Maximum swing clearance radius required is 20.5" (516 mm) at 6' 9" (2055 mm) from top of chassis frame.

9/65DL LIFTING CAPACITIES

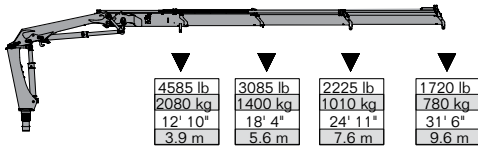
9/65DL - 1 Hydraulic



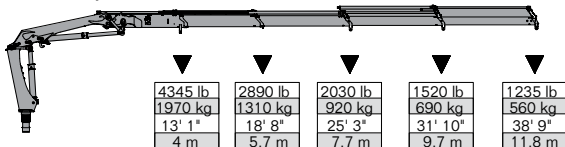
9/65DL - 2 Hydraulic



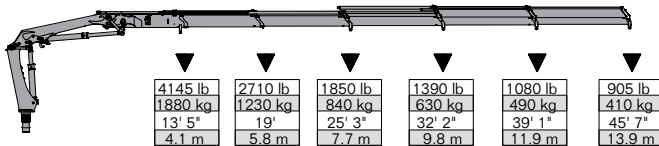
9/65DL - 3 Hydraulic



9/65DL - 4 Hydraulic



9/65DL - 5 Hydraulic



MINIMUM CHASSIS SPECIFICATIONS

Front Axle Rating (GAWR)	8000 lb
Rear Axle Rating (GAWR)	16,000 lb
Resistance to Bending Moment Minimum	976,500 in-lb



SPECIFICATIONS

Stabilizer Pad Diameter	6" (152 mm)
Crane Storage Height	7' (2134 mm)
Mounting Space***	2' 5" (737 mm)
Rotational Torque	9665 ft-lb (1.3 tm)
Rotation	420°
Optimum Pump Performance	10.5 gpm (40 L/min)
System Pressure	4350 psi (300 bar)
Oil Reservoir Capacity	14.5 gal (55 L)
Stabilizer Extension Span	
Standard	13' 8" (4166 mm)
Weight (manual out/hydraulic down fixed stabilizer)	355 lb (160 kg)
Weight (manual out/hydraulic down swing-up stabilizer)	365 lb (165 kg)
Extended Reach	16' 10" (5131 mm)
Weight (hydraulic out/hydraulic down fixed stabilizer)	410 lb (185 kg)
Weight (hydraulic out/hydraulic down swing-up stabilizer)	420 lb (190 kg)

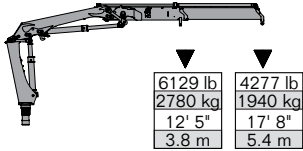
9/65DL SPECIFICATIONS

	1 - Hydraulic	2 - Hydraulic	3 - Hydraulic	4 - Hydraulic	5 - Hydraulic
Crane Rating*	63,650 ft-lb (8.8 tm)	61,480 ft-lb (8.5 tm)	59,310 ft-lb (8.2 tm)	57,865 ft-lb (8 tm)	55,695 ft-lb (7.7 tm)
Max Horizontal Reach	18' (5.5 m)	24' 7" (7.5 m)	31' 10" (9.7 m)	38' 9" (11.8 m)	45' 11" (14 m)
Max Vertical Reach	25' 7" (7.8 m)	32' 3" (9.8 m)	39' 4" (12 m)	46' 5" (14.1 m)	53' 4" (16.3 m)
Max Capacity	9040 lb (4100 kg)	8555 lb (3880 kg)	8115 lb (3680 kg)	7715 lb (3500 kg)	7340 lb (3330 kg)
Max Cap @ Max Reach	3550 lb (1610 kg)	2425 lb (1100 kg)	1720 lb (780 kg)	1235 lb (560 kg)	950 lb (410 kg)
Crane Weight **	2415 lb (1094 kg)	2645 lb (1200 kg)	2865 lb (1300 kg)	3065 lb (1390 kg)	3240 lb (1470 kg)
Hook Approach					
Vertical	9' 8" (2.9 m)	9' 4" (2.8 m)	9' (2.7 m)	8' 8" (2.6 m)	8' 4" (2.5 m)
Horizontal	2' 7" (0.8 m)	2' 9" (0.8 m)	2' 11" (0.9 m)	3' 1" (0.9 m)	3' 3" (1 m)
Center of Gravity - Stored					
Vertical	25" (635 mm)	26" (660.4 mm)	27.4" (696 mm)	28" (711.2 mm)	28.7" (729 mm)
Horizontal	10" (254 mm)	10" (254 mm)	9.8" (248.9 mm)	9" (228.6 mm)	8.7" (221 mm)
(C/L Rotation to Bridge)					

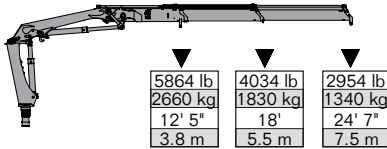
* Crane rating (ft-lb) is the rated load (lb) multiplied by the respective distance (ft) from centerline of rotation with all extensions retracted and the inner and outer booms in a horizontal position, per ANSI B30.22. ** Crane weight does not include stabilizers. ***Maximum swing clearance radius required is 20.5" (516 mm) at 6' 9" (2055 mm) from top of chassis frame.

10/72SL LIFTING CAPACITIES

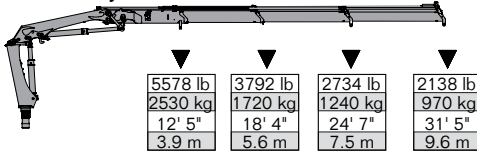
10/72SL - 1 Hydraulic



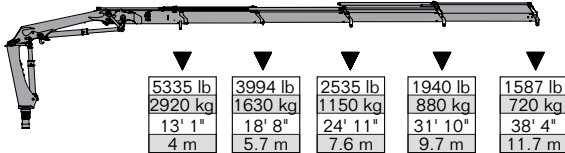
10/72SL - 2 Hydraulic



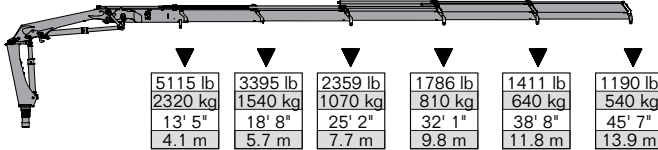
10/72SL - 3 Hydraulic



10/72SL - 4 Hydraulic



10/72SL - 5 Hydraulic



MINIMUM CHASSIS SPECIFICATIONS

Front Axle Rating (GAWR)	8000 lb
Rear Axle Rating (GAWR)	16,000 lb
Resistance to Bending Moment Minimum	1,080,000 in-lb



SPECIFICATIONS

Stabilizer Pad Diameter	6" (152 mm)
Crane Storage Height	7' (2134 mm)
Mounting Space***	2' 5" (737 mm)
Rotational Torque	9665 ft-lb (1.3 tm)
Rotation	420°
Optimum Pump Performance	
Fixed	15.8 gpm (60 L/min)
Variable	18.5 gpm (70 L/min)
System Pressure	5003 psi (345 bar)
Oil Reservoir Capacity	14 gal (55 L)
Stabilizer Extension Span	
Standard	13' 8" (4166 mm)
Weight (manual out/hydraulic down fixed stabilizer)	355 lb (160 kg)
Weight (manual out/hydraulic down swing-up stabilizer)	365 lb (165 kg)
Extended Reach	16' 10" (5131 mm)
Weight (hydraulic out/hydraulic down fixed stabilizer)	410 lb (185 kg)
Weight (hydraulic out/hydraulic down swing-up stabilizer)	420 lb (190 kg)

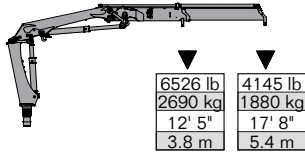
10/72SL SPECIFICATIONS

	1 - Hydraulic	2 - Hydraulic	3 - Hydraulic	4 - Hydraulic	5 - Hydraulic
Crane Rating*	75,791 ft-lb (10.5 tm)	73,625 ft-lb (10.2 tm)	71,460 ft-lb (9.9 tm)	70,016 ft-lb (9.7 tm)	68,572 ft-lb (9.5 tm)
Max Horizontal Reach	18' (5.5 m)	24' 7" (7.5 m)	31' 10" (9.7 m)	38' 8" (11.8 m)	45' 11" (14 m)
Max Vertical Reach	25' 7" (7.8 m)	32' 3" (9.8 m)	39' 4" (12 m)	46' 5" (14.1 m)	53' 4" (16.3 m)
Max Capacity	9722 lb (4410 kg)	8929 lb (4050 kg)	8929 lb (4050 kg)	8400 lb (3810 kg)	7937 lb (3600 kg)
Max Cap @ Max Reach	4277 lb (1940 kg)	2954 lb (1340 kg)	2138 lb (970 kg)	1587 lb (720 kg)	1190 lb (540 kg)
Crane Weight **	2380 lb (1080 kg)	2615 lb (1185 kg)	2835 lb (1285 kg)	3030 lb (1375 kg)	3210 lb (1455 kg)
Hook Approach					
Vertical	9' 8" (2.9 m)	9' 4" (2.8 m)	9' (2.7 m)	8' 8" (2.6 m)	8' 4" (2.5 m)
Horizontal	2' 7" (0.8 m)	2' 9" (0.8 m)	2' 11" (0.9 m)	3' 1" (0.9 m)	3' 3" (1 m)
Center of Gravity - Stored					
Vertical	24" (609.6 mm)	25" (635 mm)	26" (660.4 mm)	27" (685.8 mm)	27.7" (703.6 mm)
Horizontal	10.6" (269.2 mm)	10.5" (266.7 mm)	10" (254 mm)	9.3" (236.2 mm)	9" (228.6 mm)
(C/L Rotation to Bridge)					

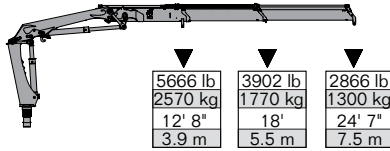
* Crane rating (ft-lb) is the rated load (lb) multiplied by the respective distance (ft) from centerline of rotation with all extensions retracted and the inner and outer booms in a horizontal position, per ANSI B30.22. ** Crane weight does not include stabilizers. ***Maximum swing clearance radius required is 20.5" (516 mm) at 6' 9" (2055 mm) from top of chassis frame.

10/72DL LIFTING CAPACITIES

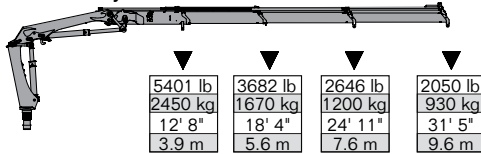
10/72DL - 1 Hydraulic



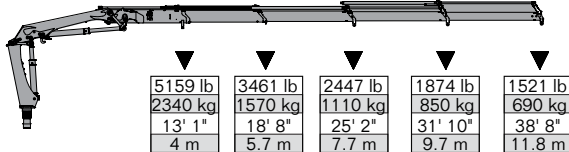
10/72DL - 2 Hydraulic



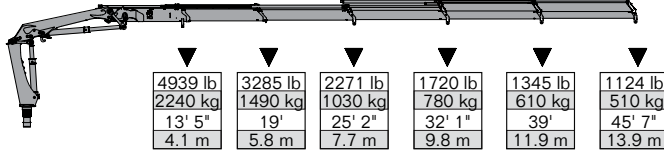
10/72DL - 3 Hydraulic



10/72DL - 4 Hydraulic



10/72DL - 5 Hydraulic



MINIMUM CHASSIS SPECIFICATIONS

Front Axle Rating (GAWR)	8000 lb
Rear Axle Rating (GAWR)	16,000 lb
Resistance to Bending Moment Minimum	1,080,000 in-lb



SPECIFICATIONS

Stabilizer Pad Diameter	6" (152 mm)
Crane Storage Height	7' (2134 mm)
Mounting Space***	2' 5" (737 mm)
Rotational Torque	9665 ft-lb (1.3 tm)
Rotation	420°
Optimum Pump Performance	
Fixed	15.8 gpm (60 L/min)
Variable	18.5 gpm (70 L/min)
System Pressure	5003 psi (345 bar)
Oil Reservoir Capacity	14 gal (55 L)
Stabilizer Extension Span	
Standard	13' 8" (4166 mm)
Weight (manual out/hydraulic down fixed stabilizer)	355 lb (160 kg)
Weight (manual out/hydraulic down swing-up stabilizer)	365 lb (165 kg)
Extended Reach	16' 10" (5131 mm)
Weight (hydraulic out/hydraulic down fixed stabilizer)	410 lb (185 kg)
Weight (hydraulic out/hydraulic down swing-up stabilizer)	420 lb (190 kg)

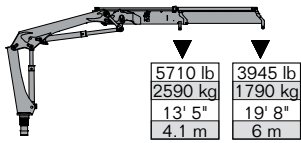
10/72DL SPECIFICATIONS

	1 - Hydraulic	2 - Hydraulic	3 - Hydraulic	4 - Hydraulic	5 - Hydraulic
Crane Rating*	73,625 ft-lb (10.2 tm)	71,460 ft-lb (9.9 tm)	70,016 ft-lb (9.7 tm)	67,851 ft-lb (9.4 tm)	66,407 ft-lb (9.2 tm)
Max Horizontal Reach	18' (5.5 m)	24' 7" (7.5 m)	31' 10" (9.7 m)	38' 8" (11.8 m)	45' 11" (14 m)
Max Vertical Reach	25' 7" (7.8 m)	32' 3" (9.8 m)	39' 4" (12 m)	46' 5" (14.1 m)	53' 4" (16.3 m)
Max Capacity	10,384 lb (4710 kg)	9855 lb (4470 kg)	9370 lb (4250 kg)	8907 lb (4040 kg)	8488 lb (3850 kg)
Max Cap @ Max Reach	4145 lb (1880 kg)	2866 lb (1300 kg)	2050 lb (930 kg)	1521 lb (690 kg)	1124 lb (510 kg)
Crane Weight **	2380 lb (1080 kg)	2615 lb (1185 kg)	2835 lb (1285 kg)	3030 lb (1375 kg)	3210 lb (1455 kg)
Hook Approach					
Vertical	9' 8" (2.9 m)	9' 4" (2.8 m)	9' (2.7 m)	8' 8" (2.6 m)	8' 4" (2.5 m)
Horizontal	2' 7" (0.8 m)	2' 9" (0.8 m)	2' 11" (0.9 m)	3' 1" (0.9 m)	3' 3" (1 m)
Center of Gravity - Stored					
Vertical	25" (635 mm)	26" (660.4 mm)	27.4" (696 mm)	28" (711.2 mm)	28.7" (729 mm)
Horizontal	10" (254 mm)	10" (254 mm)	9.8" (248.9 mm)	9" (228.6 mm)	8.7" (221 mm)
(C/L Rotation to Bridge)					

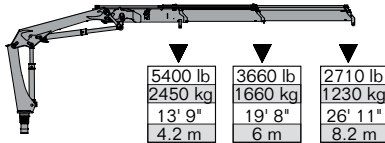
* Crane rating (ft-lb) is the rated load (lb) multiplied by the respective distance (ft) from centerline of rotation with all extensions retracted and the inner and outer booms in a horizontal position, per ANSI B30.22. ** Crane weight does not include stabilizers. ***Maximum swing clearance radius required is 20.5" (516 mm) at 6' 9" (2055 mm) from top of chassis frame.

11/78SL LIFTING CAPACITIES

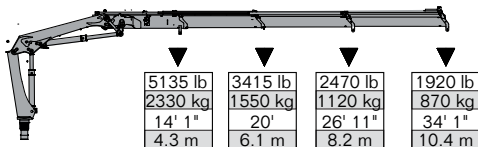
11/78SL - 1 Hydraulic



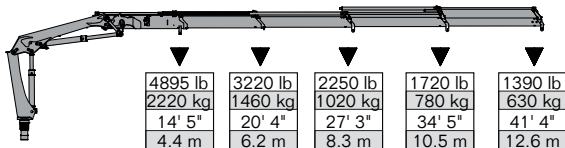
11/78SL - 2 Hydraulic



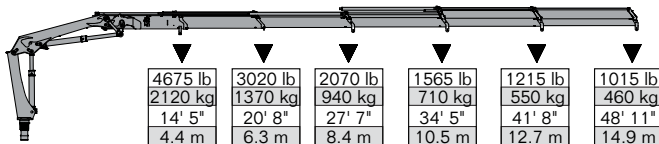
11/78SL - 3 Hydraulic



11/78SL - 4 Hydraulic



11/78SL - 5 Hydraulic



MINIMUM CHASSIS SPECIFICATIONS

Front Axle Rating (GAWR)	8000 lb
Rear Axle Rating (GAWR)	16,000 lb
Resistance to Bending Moment Minimum	1,170,000 in-lb



SPECIFICATIONS

Stabilizer Pad Diameter	6" (152 mm)
Crane Storage Height	7' (2134 mm)
Mounting Space***	2' 5" (737 mm)
Rotational Torque	9665 ft-lb (1.3 tm)
Rotation	420°
Optimum Pump Performance	10.5 gpm (40 L/min)
System Pressure	4350 psi (300 bar)
Oil Reservoir Capacity	17.2 gal (65 L)
Stabilizer Extension Span	
Standard	15' 2" (4623 m)
Weight (manual out/hydraulic down fixed stabilizer)	375 lb (170 kg)
Weight (manual out/hydraulic down swing-up stabilizer)	385 lb (175 kg)
Extended Reach	18' 4" (5588 m)
Weight (hydraulic out/hydraulic down fixed stabilizer)	430 lb (195 kg)
Weight (hydraulic out/hydraulic down swing-up stabilizer)	440 lb (200 kg)

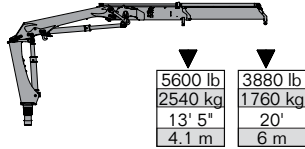
11/78SL SPECIFICATIONS

	1 - Hydraulic	2 - Hydraulic	3 - Hydraulic	4 - Hydraulic	5 - Hydraulic
Crane Rating*	77,395 ft-lb (10.7 tm)	75,500 ft-lb (10.3 tm)	72,330 ft-lb (10 tm)	70,160 ft-lb (9.7 tm)	67,990 ft-lb (9.4 tm)
Max Horizontal Reach	20' (6.1 m)	26' 11" (8.2 m)	34' 5" (10.5 m)	41' 8" (12.7 m)	49' 3" (15 m)
Max Vertical Reach	27' 5" (8.4 m)	34' 6" (10.5 m)	41' 10" (12.8 m)	46' 5" (15.1 m)	56' 9" (17.3 m)
Max Capacity	9170 lb (4160 kg)	8905 lb (4040 kg)	8355 lb (3790 kg)	7870 lb (3570 kg)	7430 lb (3370 kg)
Max Cap @ Max Reach	3945 lb (1790 kg)	2710 lb (1230 kg)	1920 lb (870 kg)	1390 lb (630 kg)	1015 lb (460 kg)
Crane Weight **	2557 lb (1160 kg)	2845 lb (1290 kg)	3085 lb (1400 kg)	3295 lb (1495 kg)	3485 lb (1580 kg)
Hook Approach					
Vertical	9' 1" (2.8 m)	8' 10" (2.7 m)	8' 6" (2.6 m)	8' 3" (2.5 m)	7' 11" (2.4 m)
Horizontal	2' 7" (0.8 m)	2' 9" (0.8 m)	2' 11" (0.9 m)	3' 1" (0.9 m)	3' 3" (1 m)
Center of Gravity - Stored					
Vertical	24.5" (622.3 mm)	25.8" (655.3 mm)	26.3" (668 mm)	27.8" (706.1 mm)	28.5" (723.9 mm)
Horizontal	13.2" (335.3 mm)	13.1" (332.7 mm)	12.8" (325.1 mm)	12.2" (309.9 mm)	11.7" (297.2 mm)

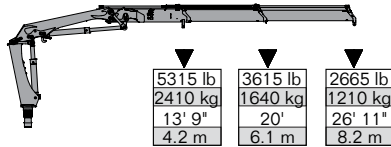
* Crane rating (ft-lb) is the rated load (lb) multiplied by the respective distance (ft) from centerline of rotation with all extensions retracted and the inner and outer booms in a horizontal position, per ANSI B30.22. ** Crane weight does not include stabilizers. ***Maximum swing clearance radius required is 20.5" (516 mm) at 6' 9" (2055 mm) from top of chassis frame.

11/78DL LIFTING CAPACITIES

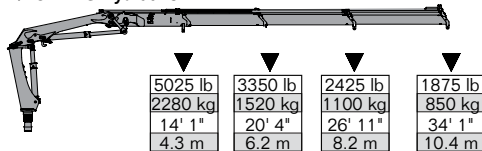
11/78DL - 1 Hydraulic



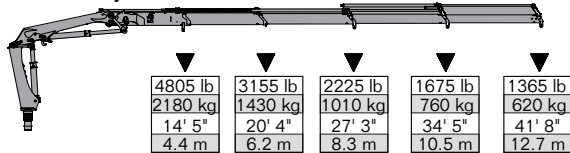
11/78DL - 2 Hydraulic



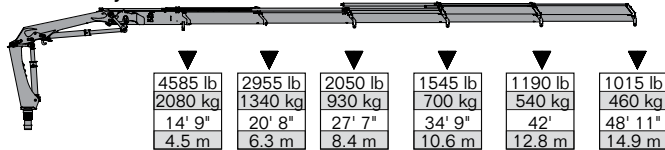
11/78DL - 3 Hydraulic



11/78DL - 4 Hydraulic



11/78DL - 5 Hydraulic



MINIMUM CHASSIS SPECIFICATIONS

Front Axle Rating (GAWR)	8000 lb
Rear Axle Rating (GAWR)	16,000 lb
Resistance to Bending Moment Minimum	1,170,000 in-lb



SPECIFICATIONS

Stabilizer Pad Diameter	6" (152 mm)
Crane Storage Height	7' (2134 mm)
Mounting Space***	2' 5" (737 mm)
Rotational Torque	9665 ft-lb (1.3 tm)
Rotation	420°
Optimum Pump Performance	10.5 gpm (40 L/min)
System Pressure	4350 psi (300 bar)
Oil Reservoir Capacity	17.2 gal (65 L)
Stabilizer Extension Span	
Standard	15' 2" (4623 mm)
Weight (manual out/hydraulic down fixed stabilizer)	375 lb (170 kg)
Weight (manual out/hydraulic down swing-up stabilizer)	385 lb (175 kg)
Extended Reach	18' 4" (5588 mm)
Weight (hydraulic out/hydraulic down fixed stabilizer)	430 lb (195 kg)
Weight (hydraulic out/hydraulic down swing-up stabilizer)	440 lb (200 kg)

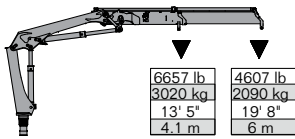
11/78DL SPECIFICATIONS

	1 - Hydraulic	2 - Hydraulic	3 - Hydraulic	4 - Hydraulic	5 - Hydraulic
Crane Rating*	76,670 ft-lb (10.6 tm)	73,775 ft-lb (10.2 tm)	71,605 ft-lb (9.9 tm)	69,435 ft-lb (9.6 tm)	67,265 ft-lb (9.3 tm)
Max Horizontal Reach	20' (6.1 m)	26' 11" (8.2 m)	34' 5" (10.5 m)	41' 8" (12.7 m)	49' 3" (15 m)
Max Vertical Reach	27' 5" (8.4 m)	34' 6" (10.5 m)	41' 10" (12.8 m)	46' 5" (15.1 m)	56' 9" (17.3 m)
Max Capacity	9280 lb (4210 kg)	8820 lb (4000 kg)	8380 lb (3800 kg)	7980 lb (3620 kg)	7630 lb (3460 kg)
Max Cap @ Max Reach	3880 lb (1760 kg)	2670 lb (1210 kg)	1875 lb (850 kg)	1365 lb (620 kg)	1015 lb (460 kg)
Crane Weight **	2645 lb (1200 kg)	2845 lb (1290 kg)	3085 lb (1400 kg)	3295 lb (1495 kg)	3485 lb (1580 kg)
Hook Approach					
Vertical	9' 1" (2.8 m)	8' 10" (2.7 m)	8' 6" (2.6 m)	8' 3" (2.5 m)	7' 11" (2.4 m)
Horizontal	2' 7" (0.8 m)	2' 9" (0.8 m)	2' 11" (0.9 m)	3' 1" (0.9 m)	3' 3" (1 m)
Center of Gravity - Stored					
Vertical	25.7" (652.8 mm)	27" (685.8 mm)	28" (711.2 mm)	29" (736.6 mm)	29.3" (744.2 mm)
Horizontal	12.6" (320 mm)	12.5" (317.5 mm)	12.2" (309.9 mm)	11.8" (299.7 mm)	11.4" (289.6 mm)
(C/L Rotation to Bridge)					

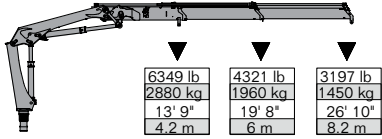
* Crane rating (ft-lb) is the rated load (lb) multiplied by the respective distance (ft) from centerline of rotation with all extensions retracted and the inner and outer booms in a horizontal position, per ANSI B30.22. ** Crane weight does not include stabilizers. ***Maximum swing clearance radius required is 20.5" (516 mm) at 6' 9" (2055 mm) from top of chassis frame.

12/86SL LIFTING CAPACITIES

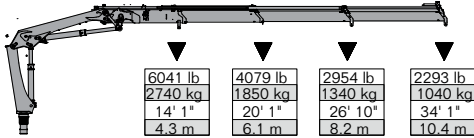
12/86SL - 1 Hydraulic



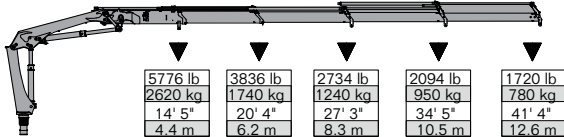
12/86SL - 2 Hydraulic



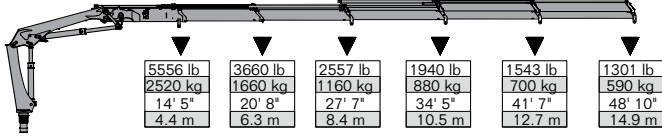
12/86SL - 3 Hydraulic



12/86SL - 4 Hydraulic



12/86SL - 5 Hydraulic



SPECIFICATIONS

Stabilizer Pad Diameter	6" (152 mm)
Crane Storage Height	7' (2134 mm)
Mounting Space***	2' 5" (737 mm)
Rotational Torque	9665 ft-lb (1.3 tm)
Rotation	420°
Optimum Pump Performance	
Fixed	15.8 gpm (60 L/min)
Variable	18.5 gpm (70 L/min)
System Pressure	5004 psi (345 bar)
Oil Reservoir Capacity	17 gal (65 L)
Stabilizer Extension Span	
Standard	15' 2" (4623 mm)
Weight (manual out/hydraulic down fixed stabilizer)	375 lb (170 kg)
Weight (manual out/hydraulic down swing-up stabilizer)	385 lb (175 kg)
Extended Reach	18' 4" (5588 mm)
Weight (hydraulic out/hydraulic down fixed stabilizer)	430 lb (195 kg)
Weight (hydraulic out/hydraulic down swing-up stabilizer)	440 lb (200 kg)

MINIMUM CHASSIS SPECIFICATIONS

Front Axle Rating (GAWR)	8000 lb
Rear Axle Rating (GAWR)	16,000 lb
Resistance to Bending Moment Minimum	1,290,000 in-lb

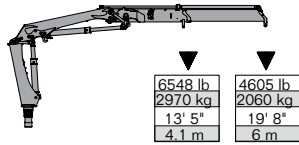
12/86SL SPECIFICATIONS

	1 - Hydraulic	2 - Hydraulic	3 - Hydraulic	4 - Hydraulic	5 - Hydraulic
Crane Rating*	89,505 ft-lb (12.4 tm)	87,340 ft-lb (12.1 tm)	84,452 ft-lb (11.7 tm)	82,287 ft-lb (11.4 tm)	80,843 ft-lb (11.2 tm)
Max Horizontal Reach	20' (6.1 m)	26' 11" (8.2 m)	34' 5" (10.5 m)	41' 7" (12.7 m)	49' 2" (15 m)
Max Vertical Reach	27' 5" (8.3 m)	34' 6" (10.5 m)	41' 10" (12.8 m)	49' 4" (15 m)	56' 9" (17.3 m)
Max Capacity	10,626 lb (4820 kg)	10,384 lb (4710 kg)	9789 lb (4440 kg)	9259 lb (4200 kg)	8774 lb (3980 kg)
Max Cap @ Max Reach	4607 lb (2090 kg)	3197 lb (1450 kg)	2293 lb (1040 kg)	1720 lb (780 kg)	1301 lb (590 kg)
Crane Weight **	2590 lb (1175 kg)	2865 lb (1300 kg)	3110 lb (1410 kg)	3320 lb (1505 kg)	3505 lb (1590 kg)
Hook Approach					
Vertical	9' 1" (2.7 m)	8' 10" (2.7 m)	8' 6" (2.6 m)	8' 3" (2.51 m)	7' 11" (2.4 m)
Horizontal	2' 7" (0.79 m)	2' 9" (0.84 m)	2' 11" (0.89 m)	3' 1" (0.94 m)	3' 3" (1 m)
Center of Gravity - Stored					
Vertical	24.5" (622.3 mm)	25.8" (655.3 mm)	26.3" (668 mm)	27.8" (706.1 mm)	28.5" (723.9 mm)
Horizontal	13.2" (335.3 mm)	13.1" (332.7 mm)	12.8" (325.1 mm)	12.2" (309.9 mm)	11.7" (297.2 mm)
(C/L Rotation to Bridge)					

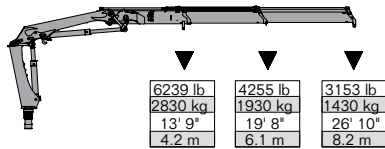
* Crane rating (ft-lb) is the rated load (lb) multiplied by the respective distance (ft) from centerline of rotation with all extensions retracted and the inner and outer booms in a horizontal position, per ANSI B30.22. ** Crane weight does not include stabilizers. ***Maximum swing clearance radius required is 20.5" (516 mm) at 6' 9" (2055 mm) from top of chassis frame.

12/86DL LIFTING CAPACITIES

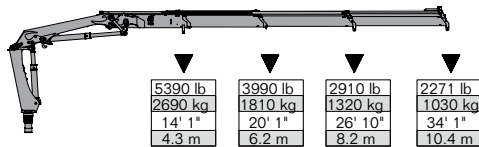
12/86DL - 1 Hydraulic



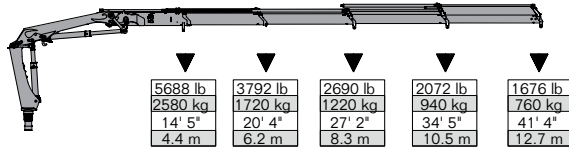
12/86DL - 2 Hydraulic



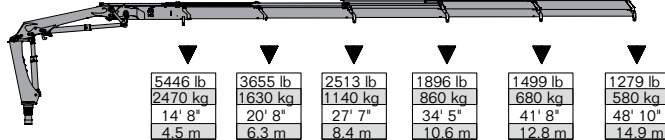
12/86DL - 3 Hydraulic



12/86DL - 4 Hydraulic



12/86DL - 5 Hydraulic



MINIMUM CHASSIS SPECIFICATIONS

Front Axle Rating (GAWR)	8000 lb
Rear Axle Rating (GAWR)	16,000 lb
Resistance to Bending Moment Minimum	1,290,000 in-lb



SPECIFICATIONS

Stabilizer Pad Diameter	6" (152 mm)
Crane Storage Height	7' (2134 mm)
Mounting Space***	2' 5" (737 mm)
Rotational Torque	9665 ft-lb (1.3 tm)
Rotation	420°
Optimum Pump Performance	
Fixed	15.8 gpm (60 L/min)
Variable	18.5 gpm (70 L/min)
System Pressure	5004 psi (345 bar)
Oil Reservoir Capacity	17 gal (65 L)
Stabilizer Extension Span	
Standard	15' 2" (4623 mm)
Weight (manual out/hydraulic down fixed stabilizer)	375 lb (170 kg)
Weight (manual out/hydraulic down swing-up stabilizer)	385 lb (175 kg)
Extended Reach	18' 4" (5588 mm)
Weight (hydraulic out/hydraulic down fixed stabilizer)	430 lb (195 kg)
Weight (hydraulic out/hydraulic down swing-up stabilizer)	440 lb (200 kg)

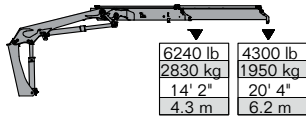
12/86DL SPECIFICATIONS

	1 - Hydraulic	2 - Hydraulic	3 - Hydraulic	4 - Hydraulic	5 - Hydraulic
Crane Rating*	88,953 ft-lb (12.3 tm)	86,060 ft-lb (11.9 tm)	83,891 ft-lb (11.6 tm)	81,721 ft-lb (11.3 tm)	79,552 ft-lb (11 tm)
Max Horizontal Reach	20' (6.1 m)	26' 11" (8.2 m)	34' 5" (10.5 m)	41' 7" (12.7 m)	49' 2" (15 m)
Max Vertical Reach	27' 5" (8.3 m)	34' 6" (10.5 m)	41' 10" (12.8 m)	49' 4" (15 m)	56' 9" (17.3 m)
Max Capacity	10,670 lb (4840 kg)	10,141 lb (4600 kg)	9656 lb (4380 kg)	9171 lb (4160 kg)	8796 lb (3990 kg)
Max Cap @ Max Reach	4542 lb (2060 kg)	3153 lb (1430 kg)	2271 lb (1030 kg)	1676 lb (760 kg)	1279 lb (580 kg)
Crane Weight **	2665 lb (1210 kg)	2940 lb (1335 kg)	3185 lb (1445 kg)	3395 lb (1540 kg)	3580 lb (1625 kg)
Hook Approach					
Vertical	9' 1" (2.7 m)	8' 10" (2.7 m)	8' 6" (2.6 m)	8' 3" (2.51 m)	7' 11" (2.4 m)
Horizontal	2' 7" (0.79 m)	2' 9" (0.84 m)	2' 11" (0.89 m)	3' 1" (0.94 m)	3' 3" (1 m)
Center of Gravity - Stored					
Vertical	25.7" (652.8 mm)	27" (685.8 mm)	28" (711.2 mm)	29" (736.6 mm)	29.3" (744.2 mm)
Horizontal	12.6" (320 mm)	12.5" (317.5 mm)	12.2" (309.9 mm)	11.8" (299.7 mm)	11.4" (289.6 mm)
(C/L Rotation to Bridge)					

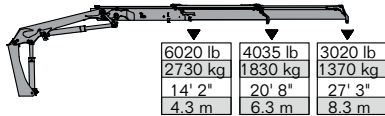
* Crane rating (ft-lb) is the rated load (lb) multiplied by the respective distance (ft) from centerline of rotation with all extensions retracted and the inner and outer booms in a horizontal position, per ANSI B30.22. ** Crane weight does not include stabilizers. ***Maximum swing clearance radius required is 20.5" (516 mm) at 6' 9" (2055 mm) from top of chassis frame.

13/88SL LIFTING CAPACITIES

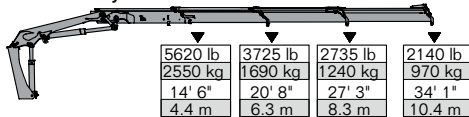
13/88SL - 1 Hydraulic



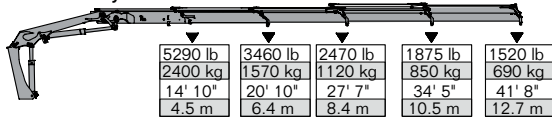
13/88SL - 2 Hydraulic



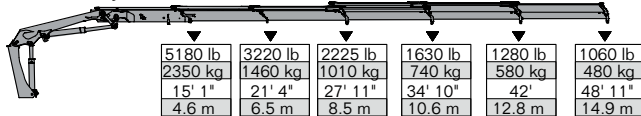
13/88SL - 3 Hydraulic



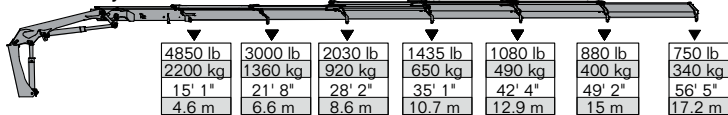
13/88SL - 4 Hydraulic



13/88SL - 5 Hydraulic



13/88SL - 6 Hydraulic



MINIMUM CHASSIS SPECIFICATIONS

Front Axle Rating (GAWR)	9000 lb
Rear Axle Rating (GAWR)	18,500 lb
Resistance to Bending Moment Minimum	1,320,000 in-lb



SPECIFICATIONS

Stabilizer Pad Diameter	6" (152 mm)
Crane Storage Height	7' 5" (2261 mm)
Mounting Space***	2' 8" (813 mm)
Rotational Torque	10,850 ft-lb (1.5 tm)
Rotation	400°
Optimum Pump Performance	11.9 gpm (45 L/min)
System Pressure	4350 psi (300 bar)
Oil Reservoir Capacity	23.8 gal (90 L)
Stabilizer Extension Span	
Standard (manual out/hydraulic down)	15' 2" (4623 mm)
Weight	440 lb (200 kg)
Opt. 1 (manual out/hydraulic down)	18' 4" (5588 mm)
Weight	520 lb (235 kg)
Opt. 2 (hydraulic out/hydraulic down)	21' 3" (6477 mm)
Weight	660 lb (300 kg)

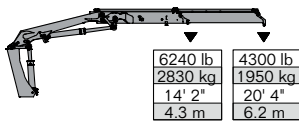
13/88SL SPECIFICATIONS

	1 - Hydraulic	2 - Hydraulic	3 - Hydraulic	4 - Hydraulic	5 - Hydraulic	6 - Hydraulic
Crane Rating*	88,245 ft-lb (12.2 tm)	84,625 ft-lb (11.7 tm)	81,735 ft-lb (11.3 tm)	78,840 ft-lb (10.9 tm)	75,945 ft-lb (10.5 tm)	73,055 ft-lb (10.1 tm)
Max Horizontal Reach	20' 4" (6.2 m)	27' 3" (8.3 m)	34' 1" (10.4 m)	41' 8" (12.7 m)	48' 11" (14.9 m)	56' 5" (17.2 m)
Max Vertical Reach	28' 7" (8.7 m)	35' 5" (10.8 m)	42' 4" (12.9 m)	49' 10" (15.2 m)	57' 1" (17.4 m)	64' 8" (19.7 m)
Max Capacity	9920 lb (4500 kg)	9920 lb (4500 kg)	8820 lb (4000 kg)	8820 lb (4000 kg)	8820 lb (4000 kg)	8820 lb (4000 kg)
Max Cap @ Max Reach	4300 lb (1950 kg)	3020 lb (1370 kg)	2140 lb (970 kg)	1520 lb (690 kg)	1080 lb (490 kg)	750 lb (340 kg)
Crane Weight **	2890 lb (1310 kg)	3195 lb (1450 kg)	3505 lb (1590 kg)	3805 lb (1725 kg)	4070 lb (1845 kg)	4280 lb (1,940 kg)
Hook Approach						
Vertical	9' 1" (2.76 m)	8' 11" (2.71 m)	8' 7" (2.62 m)	8' 4" (2.53 m)	8' 0" (2.44 m)	7' 9" (2.35 m)
Horizontal	2' 5" (0.74 m)	2' 7" (0.79 m)	2' 9" (0.84 m)	2' 11" (0.89 m)	3' 1" (0.94 m)	3' 3" (1 m)
Center of Gravity - Stored						
Vertical	2' 4" (700 mm)	2' 5" (730 mm)	2' 6" (755 mm)	2' 7" (785 mm)	2' 8" (805 mm)	2' 8" (820 mm)
Horizontal	13.4" (340 mm)	13.2" (335 mm)	12.8" (325 mm)	12" (305 mm)	11.4" (290 mm)	11" (280 mm)
(C/L Rotation to Bridge)						

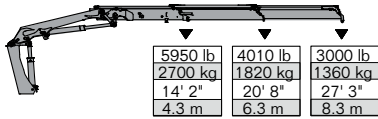
* Crane rating (ft-lb) is the rated load (lb) multiplied by the respective distance (ft) from centerline of rotation with all extensions retracted and the inner and outer booms in a horizontal position, per ANSI B30.22. ** Crane weight does not include stabilizers. ***Maximum swing clearance radius required is 20.5" (516 mm) at 6' 9" (2055 mm) from top of chassis frame.

13/88DL LIFTING CAPACITIES

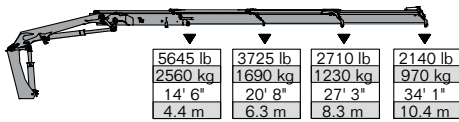
13/88DL - 1 Hydraulic



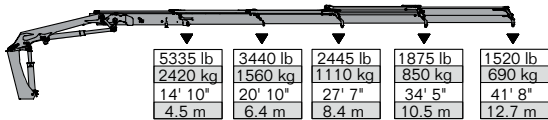
13/88DL - 2 Hydraulic



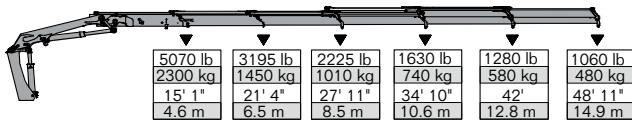
13/88DL - 3 Hydraulic



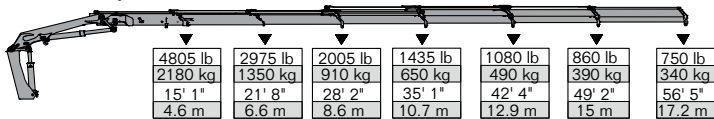
13/88DL - 4 Hydraulic



13/88DL - 5 Hydraulic



13/88DL - 6 Hydraulic



MINIMUM CHASSIS SPECIFICATIONS

Front Axle Rating (GAWR)	12,000 lb
Rear Axle Rating (GAWR)	21,000 lb
Resistance to Bending Moment Minimum	1,320,000 in-lb



SPECIFICATIONS

Stabilizer Pad Diameter	6" (152 mm)
Crane Storage Height	7' 5" (2261 mm)
Mounting Space***	2' 8" (813 mm)
Rotational Torque	10,850 ft-lb (1.5 tm)
Rotation	400°
Optimum Pump Performance	11.9 gpm (45 L/min)
System Pressure	4350 psi (300 bar)
Oil Reservoir Capacity	23.8 gal (90 L)
Stabilizer Extension Span	
Standard (manual out/hydraulic down)	15' 2" (4623 mm)
Weight	440 lb (200 kg)
Opt. 1 (manual out/hydraulic down)	18' 4" (5588 mm)
Weight	520 lb (235 kg)
Opt. 2 (hydraulic out/hydraulic down)	21' 3" (6477 mm)
Weight	660 lb (300 kg)

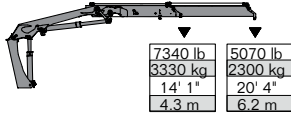
13/88DL SPECIFICATIONS

	1 - Hydraulic	2 - Hydraulic	3 - Hydraulic	4 - Hydraulic	5 - Hydraulic	6 - Hydraulic
Crane Rating*	87,520 ft-lb (12.1 tm)	84,625 ft-lb (11.7 tm)	81,735 ft-lb (11.3 tm)	78,116 ft-lb (10.8 tm)	75,945 ft-lb (10.5 tm)	73,055 ft-lb (10.1 tm)
Max Horizontal Reach	20' 4" (6.2 m)	27' 3" (8.3 m)	34' 1" (10.4 m)	41' 8" (12.7 m)	48' 11" (14.9 m)	56' 5" (17.2 m)
Max Vertical Reach	28' 7" (8.7 m)	35' 5" (10.8 m)	42' 4" (12.9 m)	49' 10" (15.2 m)	57' 1" (17.4 m)	64' 8" (19.7 m)
Max Capacity	10,780 lb (4890 kg)	10,470 lb (4750 kg)	9985 lb (4530 kg)	9525 lb (4320 kg)	9105 lb (4130 kg)	8730 lb (3960 kg)
Max Cap @ Max Reach	4,300 lb (1950 kg)	3000 lb (1360 kg)	2140 lb (970 kg)	1520 lb (690 kg)	1060 lb (480 kg)	750 lb (340 kg)
Crane Weight **	3000 lb (1360 kg)	3300 lb (1500 kg)	3615 lb (1640 kg)	3915 lb (1775 kg)	4180 lb (1895 kg)	4385 lb (1990 kg)
Hook Approach						
Vertical	9' 1" (2.76 m)	8' 11" (2.71 m)	8' 7" (2.62 m)	8' 4" (2.53 m)	8' 0" (2.44 m)	7' 9" (2.35 m)
Horizontal	2' 5" (0.74 m)	2' 7" (0.79 m)	2' 9" (0.84 m)	2' 11" (0.89 m)	3' 1" (0.94 m)	3' 3" (1 m)
Center of Gravity - Stored						
Vertical	2' 4" (700 mm)	2' 5" (730 mm)	2' 6" (755 mm)	2' 7" (785 mm)	2' 8" (805 mm)	2' 8" (820 mm)
Horizontal	12.2" (310 mm)	12" (305 mm)	11.8" (300 mm)	11.2" (285 mm)	10.6" (270 mm)	10.2" (260 mm)
(C/L Rotation to Bridge)						

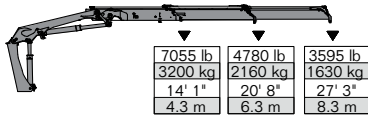
* Crane rating (ft-lb) is the rated load (lb) multiplied by the respective distance (ft) from centerline of rotation with all extensions retracted and the inner and outer booms in a horizontal position, per ANSI B30.22. ** Crane weight does not include stabilizers. ***Maximum swing clearance radius required is 20.5" (516 mm) at 6' 9" (2055 mm) from top of chassis frame.

14/98SL LIFTING CAPACITIES

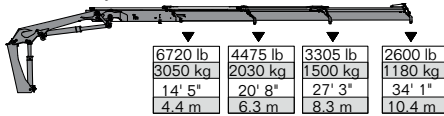
14/98SL - 1 Hydraulic



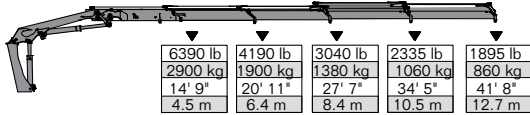
14/98SL - 2 Hydraulic



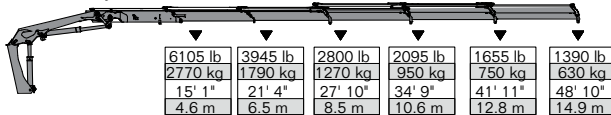
14/98SL - 3 Hydraulic



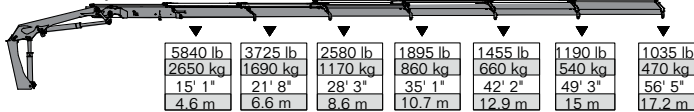
14/98SL - 4 Hydraulic



14/98SL - 5 Hydraulic



14/98SL - 6 Hydraulic



MINIMUM CHASSIS SPECIFICATIONS

Front Axle Rating (GAWR)	12,000 lb
Rear Axle Rating (GAWR)	21,000 lb
Resistance to Bending Moment Minimum	1,470,000 in-lb



SPECIFICATIONS

Stabilizer Pad Diameter	6" (152 mm)
Crane Storage Height	7' 4" (2235 mm)
Mounting Space***	2' 8" (813 mm)
Rotational Torque	14,465 ft-lb (2 tm)
Rotation	400°
Optimum Pump Performance	
Fixed	15.8 gpm (60 L/min)
Variable	21.1 gpm (80 L/min)
System Pressure	5003 psi (345 bar)
Oil Reservoir Capacity	23 gal (90 L)
Stabilizer Extension Span	
Standard (manual out/hydraulic down)	15' 2" (4623 mm)
Weight	440 lb (200 kg)
Opt. 1 (manual out/hydraulic down)	18' 4" (5588 mm)
Weight	560 lb (254 kg)
Opt. 2 (hydraulic out/hydraulic down)	21' 3" (6477 mm)
Weight	640 lb (290 kg)

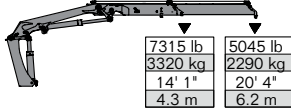
14/98SL SPECIFICATIONS

	1 - Hydraulic	2 - Hydraulic	3 - Hydraulic	4 - Hydraulic	5 - Hydraulic	6 - Hydraulic
Crane Rating*	103,220 ft-lb (14.3 tm)	99,611 ft-lb (13.8 tm)	96,723 ft-lb (13.4 tm)	93,836 ft-lb (13 tm)	90,949 ft-lb (12.6 tm)	88,783 ft-lb (12.3 tm)
Max Horizontal Reach	20' 7" (6.3 m)	27' 6" (8.4 m)	34' 5" (10.5 m)	41' 11" (12.8 m)	49' 2" (15 m)	56' 8" (17.3 m)
Max Vertical Reach	28' 7" (8.7 m)	35' 5" (10.8 m)	42' 4" (12.9 m)	49' 10" (15.2 m)	57' 1" (17.4 m)	64' 8" (19.7 m)
Max Capacity	11,680 lb (5300 kg)	11,240 lb (5100 kg)	11,020 lb (5000 kg)	10,580 lb (4800 kg)	10,140 lb (4600 kg)	9920 lb (4500 kg)
Max Cap @ Max Reach	5070 lb (2300 kg)	3595 lb (1630 kg)	2600 lb (1180 kg)	1895 lb (860 kg)	1390 lb (630 kg)	1035 lb (470 kg)
Crane Weight **	2890 lb (1310 kg)	3195 lb (1450 kg)	3505 lb (1590 kg)	3805 lb (1725 kg)	4070 lb (1845 kg)	4275 lb (1940 kg)
Hook Approach						
Vertical	9' 1" (2.76 m)	8' 11" (2.71 m)	8' 7" (2.62 m)	8' 4" (2.53 m)	8' (2.44 m)	7' 9" (2.35 m)
Horizontal	2' 5" (0.74 m)	2' 7" (0.79 m)	2' 9" (0.84 m)	2' 11" (0.89 m)	3' 1" (0.94 m)	3' 3" (1 m)
Center of Gravity - Stored						
Vertical	2' 4" (700 mm)	2' 5" (730 mm)	2' 6" (755 mm)	2' 7" (785 mm)	2' 8" (812 mm)	2' 8" (812 mm)
Horizontal	13.4" (340 mm)	13.2" (335 mm)	12.8" (325 mm)	12" (305 mm)	11.4" (290 mm)	11" (280 mm)
(C/L Rotation to Bridge)						

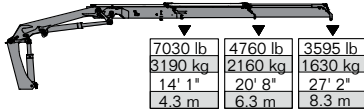
* Crane rating (ft-lb) is the rated load (lb) multiplied by the respective distance (ft) from centerline of rotation with all extensions retracted and the inner and outer booms in a horizontal position, per ANSI B30.22. ** Crane weight does not include stabilizers. ***Maximum swing clearance radius required is 20.5" (516 mm) at 6' 9" (2055 mm) from top of chassis frame.

14/98DL LIFTING CAPACITIES

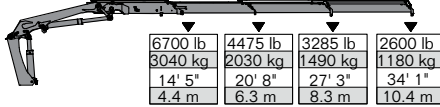
14/98DL - 1 Hydraulic



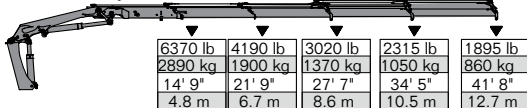
14/98DL - 2 Hydraulic



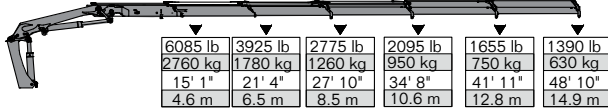
14/98DL - 3 Hydraulic



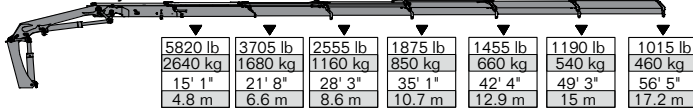
14/98DL - 4 Hydraulic



14/98DL - 5 Hydraulic



14/98DL - 6 Hydraulic



MINIMUM CHASSIS SPECIFICATIONS

Front Axle Rating (GAWR)	12,000 lb
Rear Axle Rating (GAWR)	21,000 lb
Resistance to Bending Moment Minimum	1,470,000 in-lb



SPECIFICATIONS

Stabilizer Pad Diameter	7" (152 mm)
Crane Storage Height	7' 4" (2235 mm)
Mounting Space***	2' 8" (813 mm)
Rotational Torque	14,465 ft-lb (2 tm)
Rotation	400°
Optimum Pump Performance	
Fixed	15.8 gpm (60 L/min)
Variable	21.1 gpm (80 L/min)
System Pressure	5003 psi (345 bar)
Oil Reservoir Capacity	23 gal (90 L)
Stabilizer Extension Span	
Standard (manual out/hydraulic down)	15' 2" (4623 mm)
Weight	440 lb (200 kg)
Opt. 1 (manual out/hydraulic down)	18' 4" (5588 mm)
Weight	560 lb (254 kg)
Opt. 2 (hydraulic out/hydraulic down)	21' 3" (6477 mm)
Weight	640 lb (290 kg)

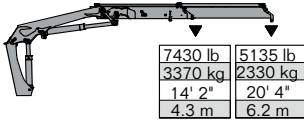
14/98DL SPECIFICATIONS

	1 - Hydraulic	2 - Hydraulic	3 - Hydraulic	4 - Hydraulic	5 - Hydraulic	6 - Hydraulic
Crane Rating*	102,498 ft-lb (14.2 tm)	99,611 ft-lb (13.8 tm)	94,630 ft-lb (13.4 tm)	93,114 ft-lb (12.9 tm)	90,949 ft-lb (12.6 tm)	88,062 ft-lb (12.2 tm)
Max Horizontal Reach	20' 7" (6.3 m)	27' 6" (8.4 m)	34' 5" (10.5 m)	41' 11" (12.8 m)	49' 2" (15 m)	56' 8" (17.3 m)
Max Vertical Reach	28' 7" (8.7 m)	35' 5" (10.8 m)	42' 4" (12.9 m)	49' 10" (15.2 m)	57' 1" (17.4 m)	64' 8" (19.7 m)
Max Capacity	12,275 lb (5570 kg)	12,120 lb (5500 kg)	11,595 lb (5260 kg)	11,085 lb (5030 kg)	10,625 lb (4820 kg)	10,205 lb (4630 kg)
Max Cap @ Max Reach	5045 lb (2290 kg)	3595 lb (1630 kg)	2600 lb (1180 kg)	1895 lb (860 kg)	1390 lb (630 kg)	1015 lb (460 kg)
Crane Weight **	3000 lb (1360 kg)	3305 lb (1500 kg)	3615 lb (1640 kg)	3915 lb (1775 kg)	4180 lb (1895 kg)	4390 lb (1990 kg)
Hook Approach						
Vertical	9' 1" (2.76 m)	8' 11" (2.71 m)	8' 7" (2.62 m)	8' 4" (2.53 m)	8' (2.44 m)	7' 9" (2.35 m)
Horizontal	2' 5" (0.74 m)	2' 7" (0.79 m)	2' 9" (0.84 m)	2' 11" (0.89 m)	3' 1" (0.94 m)	3' 3" (1 m)
Center of Gravity - Stored						
Vertical	2' 4" (700 mm)	2' 5" (730 mm)	2' 6" (755 mm)	2' 7" (785 mm)	2' 7" (805 mm)	2' 8" (812 mm)
Horizontal	12.2" (310 mm)	12" (305 mm)	11.8" (300 mm)	11.2" (285 mm)	10.6" (270 mm)	10.2" (260 mm)
(C/L Rotation to Bridge)						

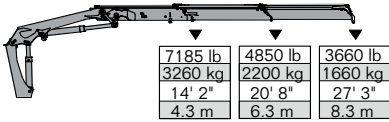
* Crane rating (ft-lb) is the rated load (lb) multiplied by the respective distance (ft) from centerline of rotation with all extensions retracted and the inner and outer booms in a horizontal position, per ANSI B30.22. ** Crane weight does not include stabilizers. ***Maximum swing clearance radius required is 20.5" (516 mm) at 6' 9" (2055 mm) from top of chassis frame.

15/105SL LIFTING CAPACITIES

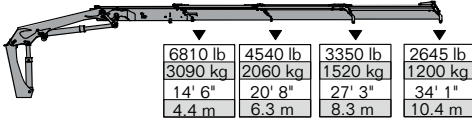
15/105SL - 1 Hydraulic



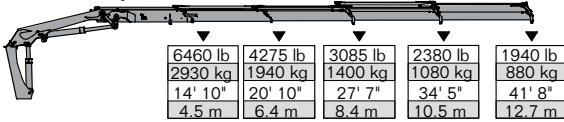
15/105SL - 2 Hydraulic



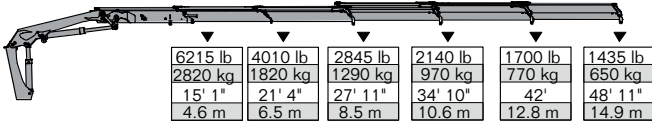
15/105SL - 3 Hydraulic



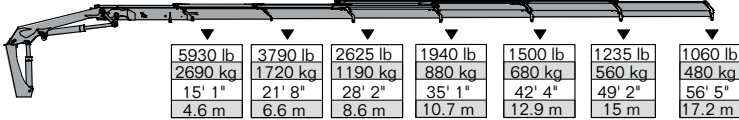
15/105SL - 4 Hydraulic



15/105SL - 5 Hydraulic



15/105SL - 6 Hydraulic



Minimum Chassis Specifications

Front Axle Rating (GAWR)	12,000 lb
Rear Axle Rating (GAWR)	21,000 lb
Resistance to Bending Moment Minimum	1,575,000 in-lb



Specifications

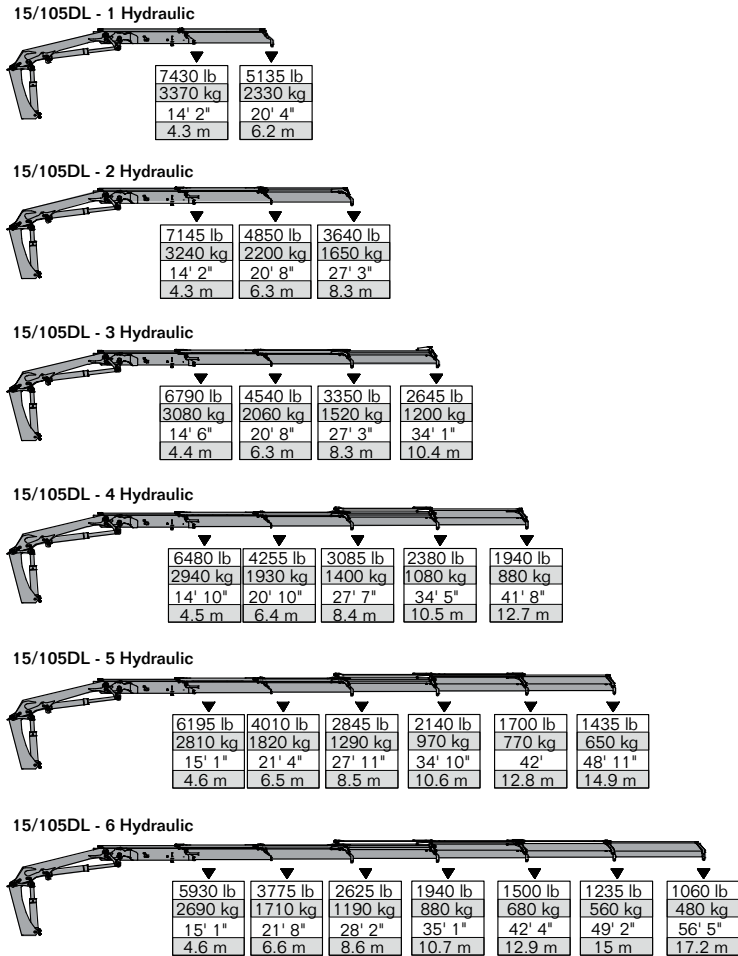
Stabilizer Pad Diameter	6" (152 mm)
Crane Storage Height	7' 5" (2261 mm)
Mounting Space***	2' 8" (813 mm)
Rotational Torque	12,295 ft-lb (1.7 tm)
Rotation	400°
Optimum Pump Performance	13.2 gpm (50 L/min)
System Pressure	4350 psi (300 bar)
Oil Reservoir Capacity	23.8 gal (90 L)
Stabilizer Extension Span	
Standard (manual out/hydraulic down)	15' 2" (4623 mm)
Weight	440 lb (200 kg)
Opt. 1 (manual out/hydraulic down)	18' 4" (5588 mm)
Weight	520 lb (235 kg)
Opt. 2 (hydraulic out/hydraulic down)	21' 3" (6477 mm)
Weight	660 lb (300 kg)

15/105SL SPECIFICATIONS

	1 - Hydraulic	2 - Hydraulic	3 - Hydraulic	4 - Hydraulic	5 - Hydraulic	6 - Hydraulic
Crane Rating*	104,880 ft-lb (14.5 tm)	101,260 ft-lb (14 tm)	98,370 ft-lb (13.6 tm)	95,475 ft-lb (13.2 tm)	92,580 ft-lb (12.8 tm)	90,415 ft-lb (12.5 tm)
Max Horizontal Reach	20' 4" (6.2 m)	27' 3" (8.3 m)	34' 1" (10.4 m)	41' 8" (12.7 m)	48' 11" (14.9 m)	56' 5" (17.2 m)
Max Vertical Reach	28' 7" (8.7 m)	35' 5" (10.8 m)	42' 4" (12.9 m)	49' 10" (15.2 m)	57' 1" (17.4 m)	64' 8" (19.7 m)
Max Capacity	12,125 lb (5500 kg)	11,575 lb (5250 kg)	11,135 lb (5050 kg)	10,690 lb (4850 kg)	10,205 lb (4630 kg)	9920 lb (4500 kg)
Max Cap @ Max Reach	5135 lb (2330 kg)	3660 lb (1660 kg)	2645 lb (1200 kg)	1940 lb (880 kg)	1435 lb (650 kg)	1060 lb (480 kg)
Crane Weight **	3020 lb (1370 kg)	3330 lb (1510 kg)	3640 lb (1650 kg)	3935 lb (1785 kg)	4200 lb (1905 kg)	4410 lb (2000 kg)
Hook Approach						
Vertical	9' 1" (2.76 m)	8' 11" (2.71 m)	8' 7" (2.62 m)	8' 4" (2.53 m)	8' 0" (2.44 m)	7' 9" (2.35 m)
Horizontal	2' 5" (0.74 m)	2' 7" (0.79 m)	2' 9" (0.84 m)	2' 11" (0.89 m)	3' 1" (0.94 m)	3' 3" (1 m)
Center of Gravity - Stored						
Vertical	2' 5" (730 mm)	2' 6" (755 mm)	2' 7" (780 mm)	2' 8" (812 mm)	2' 8" (812 mm)	2' 8" (812 mm)
Horizontal	14" (355 mm)	13.8" (350 mm)	13.2" (335 mm)	12.6" (320 mm)	12" (305 mm)	11.4" (290 mm)
(C/L Rotation to Bridge)						

* Crane rating (ft-lb) is the rated load (lb) multiplied by the respective distance (ft) from centerline of rotation with all extensions retracted and the inner and outer booms in a horizontal position, per ANSI B30.22. ** Crane weight does not include stabilizers. ***Maximum swing clearance radius required is 20.5" (516 mm) at 6' 9" (2055 mm) from top of chassis frame.

15/105DL LIFTING CAPACITIES



SPECIFICATIONS

Stabilizer Pad Diameter	6" (152 mm)
Crane Storage Height	7' 5" (2261 mm)
Mounting Space***	2' 8" (813 mm)
Rotational Torque	12,295 ft-lb (1.7 tm)
Rotation	400°
Optimum Pump Performance	13.2 gpm (50 L/min)
System Pressure	4350 psi (300 bar)
Oil Reservoir Capacity	23.8 gal (90 L)
Stabilizer Extension Span	
Standard (manual out/hydraulic down)	15' 2" (4623 mm)
Weight	440 lb (200 kg)
Opt. 1 (manual out/hydraulic down)	18' 4" (5588 mm)
Weight	520 lb (235 kg)
Opt. 2 (hydraulic out/hydraulic down)	21' 3" (6477 mm)
Weight	660 lb (300 kg)

MINIMUM CHASSIS SPECIFICATIONS

Front Axle Rating (GAWR)	12,000 lb
Rear Axle Rating (GAWR)	21,000 lb
Resistance to Bending Moment Minimum	1,755,000 in-lb

15/105DL SPECIFICATIONS

	1 - Hydraulic	2 - Hydraulic	3 - Hydraulic	4 - Hydraulic	5 - Hydraulic	6 - Hydraulic
Crane Rating*	104,880 ft-lb (14.5 tm)	101,260 ft-lb (14 tm)	98,370 ft-lb (13.6 tm)	95,475 ft-lb (13.2 tm)	92,580 ft-lb (12.8 tm)	90,410 ft-lb (12.5 tm)
Max Horizontal Reach	20' 4" (6.2 m)	27' 3" (8.3 m)	34' 1" (10.4 m)	41' 8" (12.7 m)	48' 11" (14.9 m)	56' 5" (17.2 m)
Max Vertical Reach	28' 7" (8.7 m)	35' 5" (10.8 m)	42' 4" (12.9 m)	49' 10" (15.2 m)	57' 1" (17.4 m)	64' 8" (19.7 m)
Max Capacity	13,470 lb (6110 kg)	13,115 lb (5950 kg)	12,520 lb (5680 kg)	11,970 lb (5430 kg)	11,465 lb (5200 kg)	11,000 lb (4990 kg)
Max Cap @ Max Reach	5135 lb (2330 kg)	3640 lb (1650 kg)	2645 lb (1200 kg)	1940 lb (880 kg)	1435 lb (650 kg)	1060 lb (480 kg)
Crane Weight **	3130 lb (1420 kg)	3440 lb (1560 kg)	3750 lb (1700 kg)	4045 lb (1835 kg)	4310 lb (1955 kg)	4520 lb (2050 kg)
Hook Approach						
Vertical	9' 1" (2.76 m)	8' 11" (2.71 m)	8' 7" (2.62 m)	8' 4" (2.53 m)	8' 0" (2.44 m)	7' 9" (2.35 m)
Horizontal	2' 5" (0.74 m)	2' 7" (0.79 m)	2' 9" (0.84 m)	2' 11" (0.89 m)	3' 1" (0.94 m)	3' 3" (1 m)
Center of Gravity - Stored						
Vertical	2' 7" (785 mm)	2' 7" (800 mm)	2' 8" (812 mm)	2' 9" (835 mm)	2' 9" (850 mm)	2' 10" (860 mm)
Horizontal	13" (330 mm)	12.8" (325 mm)	12.4" (315 mm)	12" (305 mm)	11.8" (300 mm)	11" (280 mm)
(C/L Rotation to Bridge)						

* Crane rating (ft-lb) is the rated load (lb) multiplied by the respective distance (ft) from centerline of rotation with all extensions retracted and the inner and outer booms in a horizontal position, per ANSI B30.22. ** Crane weight does not include stabilizers. ***Maximum swing clearance radius required is 20.5" (516 mm) at 6' 9" (2055 mm) from top of chassis frame.

> 17/117SL

Articulating Crane Technical Specifications

17/117SL LIFTING CAPACITIES

17/117SL - 1 Hydraulic

8730 lb 3960 kg	6040 lb 2740 kg
14' 1" 4.3 m	20' 4" 6.2 m

17/117SL - 2 Hydraulic

8420 lb 3820 kg	5750 lb 2610 kg	4340 lb 1970 kg
14' 1" 4.3 m	20' 8" 6.3 m	27' 3" 8.3 m

17/117SL - 3 Hydraulic

8065 lb 3660 kg	5420 lb 2460 kg	4035 lb 1830 kg	3195 lb 1450 kg
14' 5" 4.4 m	20' 8" 6.3 m	27' 3" 8.3 m	34' 1" 10.4 m

17/117SL - 4 Hydraulic

7715 lb 3500 kg	5135 lb 2330 kg	3745 lb 1700 kg	2910 lb 1320 kg	2380 lb 1080 kg
14' 9" 4.5 m	20' 11" 6.4 m	27' 7" 8.4 m	34' 5" 10.5 m	41' 8" 12.7 m

17/117SL - 5 Hydraulic

7405 lb 3360 kg	4870 lb 2210 kg	3505 lb 1590 kg	2665 lb 1210 kg	2140 lb 970 kg	1805 lb 820 kg
15' 1" 4.6 m	21' 4" 6.5 m	27' 10" 8.5 m	34' 9" 10.6 m	41' 11" 12.8 m	48' 10" 14.9 m

17/117SL - 6 Hydraulic

7140 lb 3240 kg	4630 lb 2100 kg	3285 lb 1490 kg	2470 lb 1120 kg	1940 lb 880 kg	1610 lb 730 kg	1390 lb 630 kg
15' 1" 4.6 m	21' 8" 6.6 m	28' 3" 8.6 m	35' 1" 10.7 m	42' 2" 12.9 m	49' 3" 15 m	56' 5" 17.2 m

MINIMUM CHASSIS SPECIFICATIONS

Front Axle Rating (GAWR)	12,000 lb
Rear Axle Rating (GAWR)	21,000 lb
Resistance to Bending Moment Minimum	1,755,000 in-lb



SPECIFICATIONS

Stabilizer Pad Diameter	6" (152 mm)
Crane Storage Height	7' 5" (2261 mm)
Mounting Space***	2' 8" (813 mm)
Rotational Torque	14,465 ft-lb (2 tm)
Rotation	400°
Optimum Pump Performance	
Fixed	15.8 gpm (60 L/min)
Variable	21.1 gpm (80 L/min)
System Pressure	5003 psi (345 bar)
Oil Reservoir Capacity	23 gal (90 L)
Stabilizer Extension Span	
Standard (manual out/hydraulic down)	15' 2" (4623 mm)
Weight	440 lb (200 kg)
Opt. 1 (manual out/hydraulic down)	18' 4" (5588 mm)
Weight	560 lb (254 kg)
Opt. 2 (hydraulic out/hydraulic down)	21' 3" (6477 mm)
Weight	640 lb (290 kg)

17/117SL SPECIFICATIONS

	1 - Hydraulic	2 - Hydraulic	3 - Hydraulic	4 - Hydraulic	5 - Hydraulic	6 - Hydraulic
Crane Rating*	122,709 ft-lb (17 tm)	119,100 ft-lb (16.5 tm)	116,213 ft-lb (16.1 tm)	113,325 ft-lb (15.7 tm)	110,438 ft-lb (15.3 tm)	108,273 ft-lb (15 tm)
Max Horizontal Reach	20' 7" (6.3 m)	27' 6" (8.4 m)	34' 5" (10.5 m)	41' 11" (12.8 m)	49' 2" (15 m)	56' 8" (17.3 m)
Max Vertical Reach	28' 7" (8.7 m)	35' 5" (10.8 m)	42' 6" (12.9 m)	49' 11" (15.2 m)	57' 1" (17.4 m)	64' 7" (19.7 m)
Max Capacity	13,445 lb (6100 kg)	13,225 lb (6000 kg)	12,785 lb (5800 kg)	12,120 lb (5500 kg)	12,010 lb (5450 kg)	11,900 lb (5400 kg)
Max Cap @ Max Reach	6040 lb (2740 kg)	4340 lb (1970 kg)	3195 lb (1450 kg)	2380 lb (1080 kg)	1805 lb (820 kg)	1390 lb (630 kg)
Crane Weight **	3020 lb (1370 kg)	3330 lb (1510 kg)	3640 lb (1650 kg)	3935 lb (1785 kg)	4200 lb (1905 kg)	4410 lb (2000 kg)
Hook Approach						
Vertical	9' 1" (2.76 m)	8' 11" (2.71 m)	8' 7" (2.62 m)	8' 4" (2.53 m)	8' (2.44 m)	7' 9" (2.35 m)
Horizontal	2' 5" (0.74 m)	2' 7" (0.79 m)	2' 9" (0.84 m)	2' 11" (0.89 m)	3' 1" (0.94 m)	3' 3" (1 m)
Center of Gravity - Stored						
Vertical	2' 5" (730 mm)	2' 6" (755 mm)	2' 7" (780 mm)	2' 8" (812 mm)	2' 8" (812 mm)	2' 9" (840 mm)
Horizontal	14" (355 mm)	13.8" (350 mm)	13.2" (335 mm)	12.6" (320 mm)	12" (305 mm)	11.4" (290 mm)
(C/L Rotation to Bridge)						

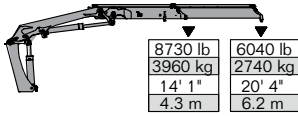
* Crane rating (ft-lb) is the rated load (lb) multiplied by the respective distance (ft) from centerline of rotation with all extensions retracted and the inner and outer booms in a horizontal position, per ANSI B30.22. ** Crane weight does not include stabilizers. ***Maximum swing clearance radius required is 20.5" (516 mm) at 6' 9" (2055 mm) from top of chassis frame.

> 17/117DL

Articulating Crane Technical Specifications

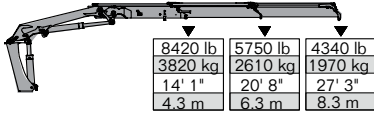
17/117DL LIFTING CAPACITIES

17/117DL - 1 Hydraulic



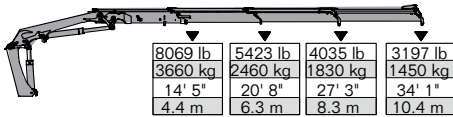
8730 lb 3960 kg	6040 lb 2740 kg
14' 1" 4.3 m	20' 4" 6.2 m

17/117DL - 2 Hydraulic



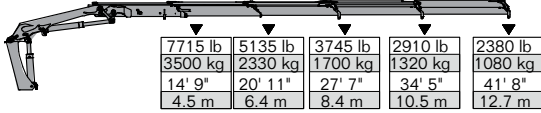
8420 lb 3820 kg	5750 lb 2610 kg	4340 lb 1970 kg
14' 1" 4.3 m	20' 8" 6.3 m	27' 3" 8.3 m

17/117DL - 3 Hydraulic



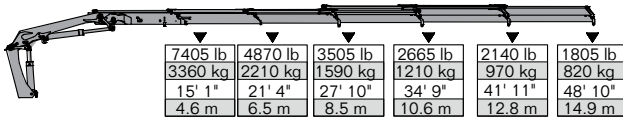
8069 lb 3660 kg	5423 lb 2460 kg	4035 lb 1830 kg	3197 lb 1450 kg
14' 5" 4.4 m	20' 8" 6.3 m	27' 3" 8.3 m	34' 1" 10.4 m

17/117DL - 4 Hydraulic



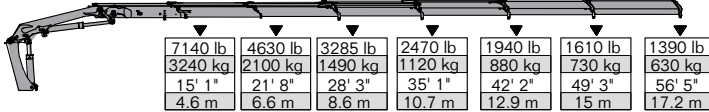
7715 lb 3500 kg	5135 lb 2330 kg	3745 lb 1700 kg	2910 lb 1320 kg	2380 lb 1080 kg
14' 9" 4.5 m	20' 11" 6.4 m	27' 7" 8.4 m	34' 5" 10.5 m	41' 8" 12.7 m

17/117DL - 5 Hydraulic



7405 lb 3360 kg	4870 lb 2210 kg	3505 lb 1590 kg	2665 lb 1210 kg	2140 lb 970 kg	1805 lb 820 kg
15' 1" 4.6 m	21' 4" 6.5 m	27' 10" 8.5 m	34' 9" 10.6 m	41' 11" 12.8 m	48' 10" 14.9 m

17/117DL - 6 Hydraulic



7140 lb 3240 kg	4630 lb 2100 kg	3285 lb 1490 kg	2470 lb 1120 kg	1940 lb 880 kg	1610 lb 730 kg	1390 lb 630 kg
15' 1" 4.6 m	21' 8" 6.6 m	28' 3" 8.6 m	35' 1" 10.7 m	42' 2" 12.9 m	49' 3" 15 m	56' 5" 17.2 m

MINIMUM CHASSIS SPECIFICATIONS

Front Axle Rating (GAWR)	12,000 lb
Rear Axle Rating (GAWR)	21,000 lb
Resistance to Bending Moment Minimum	1,755,000 in-lb



SPECIFICATIONS

Stabilizer Pad Diameter	6" (152 mm)
Crane Storage Height	7' 5" (2261 mm)
Mounting Space***	2' 8" (813 mm)
Rotational Torque	14,465 ft-lb (2 tm)
Rotation	400°
Optimum Pump Performance	
Fixed	15.8 gpm (60 L/min)
Variable	21.1 gpm (80 L/min)
System Pressure	5003 psi (345 bar)
Oil Reservoir Capacity	23 gal (90 L)
Stabilizer Extension Span	
Standard (manual out/hydraulic down)	15' 2" (4623 mm)
Weight	440 lb (200 kg)
Opt. 1 (manual out/hydraulic down)	18' 4" (5588 mm)
Weight	560 lb (254 kg)
Opt. 2 (hydraulic out/hydraulic down)	21' 3" (6477 mm)
Weight	640 lb (290 kg)

17/117DL SPECIFICATIONS

	1 - Hydraulic	2 - Hydraulic	3 - Hydraulic	4 - Hydraulic	5 - Hydraulic	6 - Hydraulic
Crane Rating*	122,709 ft-lb (14.2 tm)	119,100 ft-lb (13.8 tm)	116,213 ft-lb (13.4 tm)	112,603 ft-lb (12.9 tm)	110,438 ft-lb (12.6 tm)	108,273 ft lb (12.2 tm)
Max Horizontal Reach	20' 7" (6.2 m)	27' 6" (8.3 m)	34' 5" (10.4 m)	41' 11" (12.7 m)	49' 2" (14.9 m)	56' 8" (17.2 m)
Max Vertical Reach	28' 7" (8.7 m)	35' 5" (10.8 m)	42' 6" (12.9 m)	49' 11" (15.2 m)	57' 1" (17.4 m)	64' 7" (19.7 m)
Max Capacity	15,625 lb (7090 kg)	15,230 lb (6910 kg)	14,570 lb (6610 kg)	13,950 lb (6330 kg)	13,380 lb (6070 kg)	12,870 lb (5840 kg)
Max Cap @ Max Reach	6015 lb (2730 kg)	4320 lb (1960 kg)	3195 lb (1450 kg)	2380 lb (1080 kg)	1805 lb (820 kg)	1390 lb (630 kg)
Crane Weight **	3130 lb (1420 kg)	3440 lb (1560 kg)	3750 lb (1700 kg)	4045 lb (1835 kg)	4310 lb (1955 kg)	4520 lb (2050 kg)
Hook Approach						
Vertical	9' 1" (2.76 m)	8' 11" (2.71 m)	8' 7" (2.62 m)	8' 4" (2.53 m)	8' (2.44 m)	7' 9" (2.35 m)
Horizontal	2' 5" (0.74 m)	2' 7" (0.79 m)	2' 9" (0.84 m)	2' 11" (0.89 m)	3' 1" (0.94 m)	3' 3" (1 m)
Center of Gravity - Stored						
Vertical	2' 7" (785 mm)	2' 7" (800 mm)	2' 8" (812 mm)	2' 9" (835 mm)	2' 9" (850 mm)	2' 10" (860 mm)
Horizontal	13" (330 mm)	12.8" (325 mm)	12.4" (315 mm)	12" (305 mm)	11.8" (300 mm)	11" (280 mm)
(C/L Rotation to Bridge)						

* Crane rating (ft-lb) is the rated load (lb) multiplied by the respective distance (ft) from centerline of rotation with all extensions retracted and the inner and outer booms in a horizontal position, per ANSI B30.22. ** Crane weight does not include stabilizers. ***Maximum swing clearance radius required is 20.5" (516 mm) at 6' 9" (2055 mm) from top of chassis frame.

18/124SL LIFTING CAPACITIES

18/124SL - 2 Hydraulic

8420 lb 3820 kg	5775 lb 2620 kg	4365 lb 1980 kg
14' 1" 4.3 m	20' 4" 6.2 m	26' 11" 8.2 m

18/124SL - 3 Hydraulic

8045 lb 3650 kg	5425 lb 2460 kg	4035 lb 1830 kg	3220 lb 1460 kg
14' 5" 4.4 m	20' 8" 6.3 m	27' 11" 8.2 m	33' 6" 10.2 m

18/124SL - 4 Hydraulic

7670 lb 3480 kg	5095 lb 2310 kg	3705 lb 1680 kg	2890 lb 1310 kg	2380 lb 1080 kg
14' 9" 4.5 m	20' 6.4 m	27' 3" 8.3 m	33' 10" 10.3 m	40' 8" 12.4 m

18/124SL - 5 Hydraulic

7320 lb 3320 kg	4785 lb 2170 kg	3415 lb 1550 kg	2600 lb 1180 kg	2070 lb 950 kg	1740 lb 790 kg
15' 1" 4.6 m	21' 6.4 m	27' 7" 8.4 m	34' 1" 10.4 m	41' 12.5 m	48' 3" 14.7 m

18/124SL - 6 Hydraulic

6990 lb 3170 kg	4495 lb 2040 kg	3155 lb 1430 kg	2335 lb 1060 kg	1810 lb 820 kg	1475 lb 670 kg	1255 lb 570 kg
15' 5" 4.6 m	21' 4" 6.5 m	27' 11" 8.5 m	34' 5" 10.5 m	41' 4" 12.6 m	48' 7" 14.8 m	56' 1" 17.1 m

18/124SL - 7 Hydraulic

6660 lb 3020 kg	4325 lb 1920 kg	2890 lb 1310 kg	2070 lb 940 kg	1545 lb 700 kg	1215 lb 550 kg	990 lb 450 kg	860 lb 390 kg
15' 5" 4.7 m	21' 8" 6.6 m	27' 11" 8.5 m	34' 5" 10.5 m	41' 4" 12.6 m	48' 7" 14.8 m	56' 1" 17.1 m	63' 4" 19.3 m

18/124SL - 8 Hydraulic

6435 lb 2920 kg	4035 lb 1830 kg	2710 lb 1230 kg	1920 lb 870 kg	1390 lb 630 kg	1060 lb 480 kg	840 lb 380 kg	705 lb 320 kg	615 lb 280 kg
15' 9" 4.8 m	22' 6.7 m	28' 3" 8.6 m	34' 9" 10.6 m	41' 8" 12.7 m	48' 11" 14.9 m	56' 5" 17.2 m	63' 8" 19.4 m	70' 10" 21.6 m



SPECIFICATIONS

Stabilizer Pad Diameter	7" (178 mm)
Crane Storage Height	7' 6" (2286 mm)
Mounting Space***	2' 11" (889 mm)
Rotational Torque	17,555 ft-lb (2.4 tm)
Rotation	400°
Optimum Pump Performance	14.5 gpm (55 L/min)
System Pressure	4350 psi (300 bar)
Oil Reservoir Capacity	23.8 gal (90 L)
Stabilizer Extension Span	
Standard (manual out/hydraulic down)	18' 3" (5563 mm)
Weight	605 lb (275 kg)
Option (hydraulic out/hydraulic down)	21' 2" (6452 mm)
Weight	785 lb (355 kg)

MINIMUM CHASSIS SPECIFICATIONS

Front Axle Rating (GAWR)	14,000 lb
Rear Axle Rating (GAWR)	40,000 lb
Resistance to Bending Moment Minimum	1,860,000 in-lb

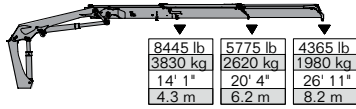
18/124SL SPECIFICATIONS

	2 - Hydraulic	3 - Hydraulic	4 - Hydraulic	5 - Hydraulic	6 - Hydraulic	7 - Hydraulic	8 - Hydraulic
Crane Rating*	119,345 ft-lb (16.5 tm)	116,450 ft-lb (16.1 tm)	112,835 ft-lb (15.6 tm)	109,220 ft-lb (15.1 tm)	106,325 ft-lb (14.7 tm)	102,710 ft-lb (14.2 tm)	101,260 ft-lb (14 tm)
Max Horizontal Reach	27' 3" (8.3 m)	33' 10" (10.3 m)	41' (12.5 m)	48' 7" (14.8 m)	56' 5" (17.2 m)	63' 8" (19.4 m)	71' 2" (21.7 m)
Max Vertical Reach	35' 1" (10.7 m)	42' (12.8 m)	49' 3" (15 m)	56' 5" (17.2 m)	64' 4" (19.6 m)	71' 10" (21.9 m)	79' 1" (24.1 m)
Max Capacity	13,800 lb (6260 kg)	13,030 lb (5910 kg)	12,280 lb (5570 kg)	11,595 lb (5260 kg)	11,355 lb (5150 kg)	10,735 lb (4870 kg)	10,250 lb (4650 kg)
Max Cap @ Max Reach	4365 lb (1980 kg)	3220 lb (1460 kg)	2380 lb (1080 kg)	1740 lb (790 kg)	1255 lb (570 kg)	860 lb (390 kg)	615 lb (280 kg)
Crane Weight **	3900 lb (1770 kg)	4245 lb (1925 kg)	4585 lb (2080 kg)	4895 lb (2220 kg)	5170 lb (2345 kg)	5400 lb (2450 kg)	5590 lb (2535 kg)
Hook Approach							
Vertical	7' 3" (2.21 m)	7' 6" (2.29 m)	7' 10" (2.38 m)	8' 1" (2.47 m)	8' 5" (2.56 m)	8' 8" (2.65 m)	9' (2.74 m)
Horizontal	2' 3" (0.69 m)	2' 5" (0.74 m)	2' 7" (0.79 m)	2' 9" (0.84 m)	2' 11" (0.89 m)	3' 1" (0.94 m)	3' 3" (1 m)
Center of Gravity - Stored							
Vertical	2' 6" (770 mm)	2' 8" (820 mm)	2' 8" (815 mm)	2' 9" (835 mm)	2' 10" (855 mm)	2' 10" (875 mm)	2' 11" (890 mm)
Horizontal	13.4" (340 mm)	12.4" (315 mm)	12.2" (310 mm)	11.8" (300 mm)	11.2" (285 mm)	10.6" (270 mm)	10.4" (265 mm)

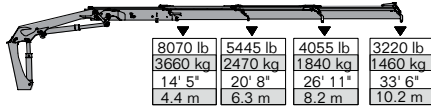
* Crane rating (ft-lb) is the rated load (lb) multiplied by the respective distance (ft) from centerline of rotation with all extensions retracted and the inner and outer booms in a horizontal position, per ANSI B30.22. ** Crane weight does not include stabilizers. ***Maximum swing clearance radius required is 20.5" (516 mm) at 6' 9" (2055 mm) from top of chassis frame.

18/124DL LIFTING CAPACITIES

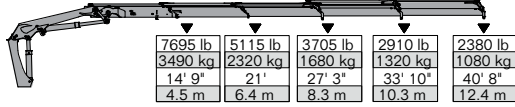
18/124DL - 2 Hydraulic



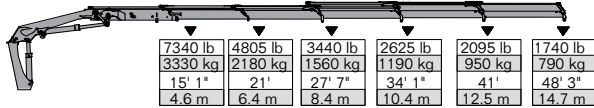
18/124DL - 3 Hydraulic



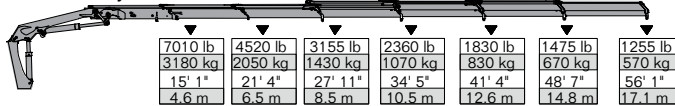
18/124DL - 4 Hydraulic



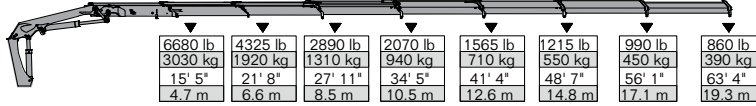
18/124DL - 5 Hydraulic



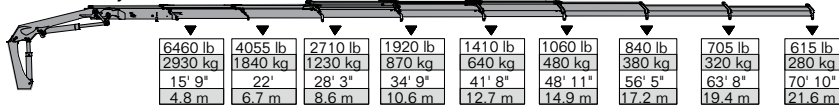
18/124DL - 6 Hydraulic



18/124DL - 7 Hydraulic



18/124DL - 8 Hydraulic



SPECIFICATIONS

Stabilizer Pad Diameter	7" (178 mm)
Crane Storage Height	7' 6" (2286 mm)
Mounting Space***	2' 11" (889 mm)
Rotational Torque	17,555 ft-lb (2.4 tm)
Rotation	400°
Optimum Pump Performance	14.5 gpm (55 L/min)
System Pressure	4350 psi (300 bar)
Oil Reservoir Capacity	23.8 gal (90 L)
Stabilizer Extension Span	
Standard (manual out/hydraulic down)	18' 3" (5563 mm)
Weight	605 lb (275 kg)
Option (hydraulic out/hydraulic down)	21' 2" (6452 mm)
Weight	785 lb (355 kg)

MINIMUM CHASSIS SPECIFICATIONS

Front Axle Rating (GAWR)	14,000 lb
Rear Axle Rating (GAWR)	40,000 lb
Resistance to Bending Moment Minimum	1,860,000 in-lb

18/124DL SPECIFICATIONS

	2 - Hydraulic	3 - Hydraulic	4 - Hydraulic	5 - Hydraulic	6 - Hydraulic	7 - Hydraulic	8 - Hydraulic
Crane Rating*	120,070 ft-lb (16.6 tm)	116,450 ft-lb (16.1 tm)	112,835 ft-lb (15.6 tm)	109,940 ft-lb (15.2 tm)	106,325 ft-lb (14.7 tm)	103,430 ft-lb (14.3 tm)	101,260 ft-lb (14 tm)
Max Horizontal Reach	27' 3" (8.3 m)	33' 10" (10.3 m)	41' (12.5 m)	48' 7" (14.8 m)	56' 5" (17.2 m)	63' 8" (19.4 m)	71' 2" (21.7 m)
Max Vertical Reach	35' 1" (10.7 m)	42' (12.8 m)	49' 3" (15 m)	56' 5" (17.2 m)	64' 4" (19.6 m)	71' 10" (21.9 m)	79' 1" (24.1 m)
Max Capacity	14,265 lb (6470 kg)	13,625 lb (6180 kg)	13,005 lb (5900 kg)	12,435 lb (5640 kg)	11,925 lb (5410 kg)	11,400 lb (5170 kg)	10,980 lb (4980 kg)
Max Cap @ Max Reach	4365 lb (1980 kg)	3220 lb (1460 kg)	2380 lb (1080 kg)	1740 lb (790 kg)	1255 lb (570 kg)	860 lb (390 kg)	615 lb (280 kg)
Crane Weight **	4055 lb (1840 kg)	4400 lb (1995 kg)	4805 lb (2180 kg)	5115 lb (2320 kg)	5390 lb (2445 kg)	5620 lb (2550 kg)	5810 lb (2635 kg)
Hook Approach							
Vertical	7' 3" (2.21 m)	7' 6" (2.29 m)	7' 10" (2.38 m)	8' 1" (2.47 m)	8' 5" (2.56 m)	8' 8" (2.65 m)	9' (2.74 m)
Horizontal	2' 3" (0.69 m)	2' 5" (0.74 m)	2' 7" (0.79 m)	2' 9" (0.84 m)	2' 11" (0.89 m)	3' 1" (0.94 m)	3' 3" (1 m)
Center of Gravity - Stored							
Vertical	2' 7" (795 mm)	2' 8" (820 mm)	2' 9" (840 mm)	2' 10" (855 mm)	2' 10" (855 mm)	2' 11" (890 mm)	3' (910 mm)
Horizontal	12.8" (325 mm)	12.4" (315 mm)	12.2" (310 mm)	11.4" (290 mm)	11.2" (285 mm)	10.4" (265 mm)	10" (255 mm)
(C/L Rotation to Bridge)							

* Crane rating (ft-lb) is the rated load (lb) multiplied by the respective distance (ft) from centerline of rotation with all extensions retracted and the inner and outer booms in a horizontal position, per ANSI B30.22. ** Crane weight does not include stabilizers. ***Maximum swing clearance radius required is 20.5" (516 mm) at 6' 9" (2055 mm) from top of chassis frame.

20/138SL LIFTING CAPACITIES

20/138SL - 2 Hydraulic

9920 lb 4500 kg	6830 lb 3100 kg	5180 lb 2350 kg
14' 4" 4.3 m	20' 4" 6.2 m	26' 11" 8.2 m

20/138SL - 3 Hydraulic

9524 lb 4320 kg	6480 lb 2940 kg	4850 lb 2200 kg	3880 lb 1760 kg
14' 5" 4.4 m	20' 8" 6.3 m	26' 11" 8.2 m	33' 6" 10.2 m

20/138SL - 4 Hydraulic

9125 lb 4140 kg	6150 lb 2790 kg	4495 lb 2040 kg	3550 lb 1610 kg	2910 lb 1320 kg
14' 9" 4.5 m	20' 11" 6.4 m	27' 3" 8.3 m	33' 8" 10.3 m	40' 8" 12.4 m

20/138SL - 5 Hydraulic

8750 lb 3970 kg	5820 lb 2640 kg	4210 lb 1910 kg	3260 lb 1480 kg	2625 lb 1190 kg	2205 lb 1000 kg
15' 1" 4.6 m	20' 11" 6.4 m	27' 7" 8.4 m	34' 1" 10.4 m	41' 12.5 m	48' 3" 14.7 m

20/138SL - 6 Hydraulic

8395 lb 3810 kg	5530 lb 2510 kg	3945 lb 1790 kg	2975 lb 1350 kg	2360 lb 1070 kg	1940 lb 880 kg	1655 lb 750 kg
15' 1" 4.6 m	21' 4" 6.5 m	27' 10" 8.5 m	34' 5" 10.5 m	41' 4" 12.6 m	48' 7" 14.8 m	55' 9" 17.0 m

20/138SL - 7 Hydraulic

8045 lb 3650 kg	5225 lb 2370 kg	3660 lb 1660 kg	2710 lb 1230 kg	2095 lb 950 kg	1675 lb 760 kg	1390 lb 630 kg	1210 lb 550 kg
15' 5" 4.7 m	21' 8" 6.6 m	27' 10" 8.5 m	34' 5" 10.5 m	41' 4" 12.6 m	48' 7" 14.8 m	56' 1" 17.1 m	62' 11" 19.2 m

20/138SL - 8 Hydraulic

7800 lb 3540 kg	5025 lb 2280 kg	3480 lb 1580 kg	2535 lb 1150 kg	1915 lb 870 kg	1500 lb 680 kg	1235 lb 560 kg	1060 lb 480 kg	950 lb 430 kg
15' 9" 4.8 m	22' 6.7 m	28' 3" 8.6 m	34' 9" 10.6 m	41' 8" 12.7 m	48' 10" 14.9 m	56' 5" 17.2 m	63' 4" 19.3 m	70' 10" 21.5 m



SPECIFICATIONS

Stabilizer Pad Diameter	7" (178 mm)
Crane Storage Height	7' 6" (2286 mm)
Mounting Space***	2' 11" (889 mm)
Rotational Torque	17,555 ft-lb (2.4 tm)
Rotation	400°
Optimum Pump Performance	
Fixed	15.8 gpm (60 L/min)
Variable	21.1 gpm (80 L/min)
System Pressure	5003 psi (345 Bar)
Oil Reservoir Capacity	23 gal (90 L)
Stabilizer Extension Span	
Standard (manual out/hydraulic down)	18' 3" (5563 mm)
Weight	605 lb (275 kg)
Option (hydraulic out/hydraulic down)	21' 2" (6452 mm)
Weight	785 lb (355 kg)

MINIMUM CHASSIS SPECIFICATIONS

Front Axle Rating (GAWR)	14,000 lb
Rear Axle Rating (GAWR)	40,000 lb
Resistance to Bending Moment	2,070,000 in-lb
Minimum	

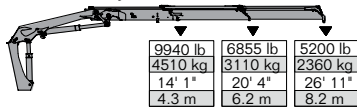
20/138SL SPECIFICATIONS

	2 - Hydraulic	3 - Hydraulic	4 - Hydraulic	5 - Hydraulic	6 - Hydraulic	7 - Hydraulic	8 - Hydraulic
Crane Rating*	140,748 ft-lb (19.5 tm)	137,145 ft-lb (19 tm)	121,391 ft-lb (18.5 tm)	118,766 ft-lb (18.1 tm)	115,485 ft-lb (17.6 tm)	112,861 ft-lb (17.2 tm)	110,892 ft-lb (16.9 tm)
Max Horizontal Reach	27' 2" (8.3 m)	33' 8" (10.3 m)	41' (12.5 m)	48' 6" (14.8 m)	56' 1" (17.1 m)	63' 4" (19.3 m)	70' 10" (21.6 m)
Max Vertical Reach	35' 1" (10.7 m)	42' (12.8 m)	49' 3" (15 m)	56' 5" (17.2 m)	64' 4" (19.6 m)	71' 10" (21.9 m)	79' 1" (24.1 m)
Max Capacity	16,200 lb (7350 kg)	15,360 lb (6970 kg)	14,545 lb (6600 kg)	13,775 lb (6250 kg)	13,555 lb (6150 kg)	12,850 lb (5830 kg)	12,300 lb (5580 kg)
Max Cap @ Max Reach	5180 lb (2350 kg)	3880 lb (1760 kg)	2910 lb (1320 kg)	2205 lb (1000 kg)	1655 lb (750 kg)	1210 lb (550 kg)	950 lb (430 kg)
Crane Weight **	3900 lb (1770 kg)	4245 lb (1925 kg)	4585 lb (2080 kg)	4895 lb (2220 kg)	5170 lb (2345 kg)	5400 lb (2450 kg)	5590 lb (2535 kg)
Hook Approach							
Vertical	7' 3" (2.21 m)	7' 6" (2.29 m)	7' 10" (2.38 m)	8' 1" (2.47 m)	8' 5" (2.56 m)	8' 8" (2.65 m)	9' (2.74 m)
Horizontal	2' 3" (0.69 m)	2' 5" (0.74 m)	2' 7" (0.79 m)	2' 9" (0.84 m)	2' 11" (0.89 m)	3' 1" (0.94 m)	3' 3" (1 m)
Center of Gravity - Stored							
Vertical	2' 6" (770 mm)	2' 8" (820 mm)	2' 8" (815 mm)	2' 9" (835 mm)	2' 10" (855 mm)	2' 10" (875 mm)	2' 11" (890 mm)
Horizontal	13.4" (340 mm)	12.4" (315 mm)	12.2" (310 mm)	11.8" (300 mm)	11.2" (285 mm)	10.6" (270 mm)	10.4" (265 mm)
(C/L Rotation to Bridge)							

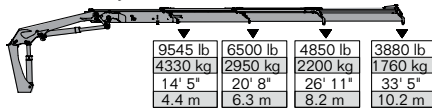
* Crane rating (ft-lb) is the rated load (lb) multiplied by the respective distance (ft) from centerline of rotation with all extensions retracted and the inner and outer booms in a horizontal position, per ANSI B30.22. ** Crane weight does not include stabilizers. ***Maximum swing clearance radius required is 20.5" (516 mm) at 6' 9" (2055 mm) from top of chassis frame.

20/138DL LIFTING CAPACITIES

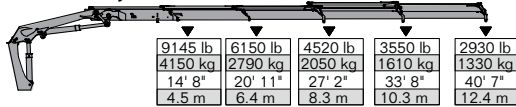
20/138DL - 2 Hydraulic



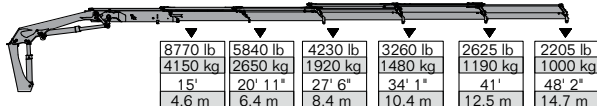
20/138DL - 3 Hydraulic



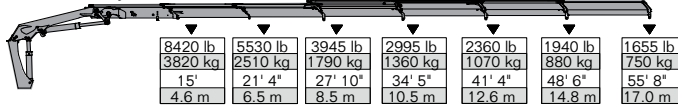
20/138DL - 4 Hydraulic



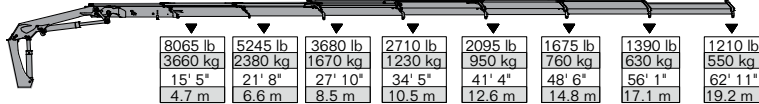
20/138DL - 5 Hydraulic



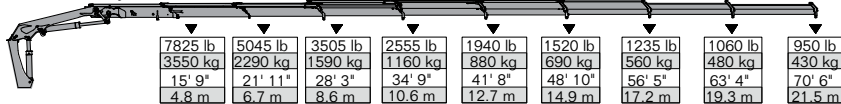
20/138DL - 6 Hydraulic



20/138DL - 7 Hydraulic



20/138DL - 8 Hydraulic



SPECIFICATIONS

Stabilizer Pad Diameter	7" (178 mm)
Crane Storage Height	7' 6" (2286 mm)
Mounting Space***	2' 11" (889 mm)
Rotational Torque	17,555 ft-lb (2.4 tm)
Rotation	400°
Optimum Pump Performance	
Fixed	15.8 gpm (60 L/min)
Variable	21.1 gpm (80 L/min)
System Pressure	5003 psi (345 Bar)
Oil Reservoir Capacity	23 gal (90 L)
Stabilizer Extension Span	
Standard (manual out/hydraulic down)	18' 3" (5563 mm)
Weight	605 lb (275 kg)
Option (hydraulic out/hydraulic down)	21' 2" (6452 mm)
Weight	785 lb (355 kg)

MINIMUM CHASSIS SPECIFICATIONS

Front Axle Rating (GAWR)	14,000 lb
Rear Axle Rating (GAWR)	40,000 lb
Resistance to Bending Moment Minimum	2,070,000 in-lb

20/138DL SPECIFICATIONS

	2 - Hydraulic	3 - Hydraulic	4 - Hydraulic	5 - Hydraulic	6 - Hydraulic	7 - Hydraulic	8 - Hydraulic
Crane Rating*	140,748 ft-lb (19.5 tm)	137,867 ft-lb (19.1 tm)	134,258 ft-lb (18.6 tm)	130,649 ft-lb (18.1 tm)	127,762 ft-lb (17.7 tm)	124,153 ft-lb (17.2 tm)	122,709 ft-lb (17 tm)
Max Horizontal Reach	27' 2" (8.3 m)	33' 8" (10.3 m)	41' (12.5 m)	48' 6" (14.8 m)	56' 1" (17.1 m)	63' 4" (19.3 m)	70' 10" (21.6 m)
Max Vertical Reach	35' 1" (10.7 m)	42' (12.8 m)	49' 3" (15 m)	56' 5" (17.2 m)	64' 4" (19.6 m)	71' 10" (21.9 m)	79' 1" (24.1 m)
Max Capacity	16,265 lb (7380 kg)	15,580 lb (7070 kg)	14,920 lb (6770 kg)	14,325 lb (6500 kg)	13,755 lb (6240 kg)	13,200 lb (5990 kg)	12,740 lb (5780 kg)
Max Cap @ Max Reach	5200 lb (2360 kg)	3880 lb (1760 kg)	2930 lb (1330 kg)	2205 lb (1000 kg)	1655 lb (750 kg)	1210 lb (550 kg)	950 lb (430 kg)
Crane Weight **	4055 lb (1840 kg)	4400 lb (1995 kg)	4805 lb (2180 kg)	5115 lb (2320 kg)	5390 lb (2445 kg)	5620 lb (2550 kg)	5810 lb (2635 kg)
Hook Approach							
Vertical	7' 3" (2.21 m)	7' 6" (2.29 m)	7' 10" (2.38 m)	8' 1" (2.47 m)	8' 5" (2.56 m)	8' 8" (2.65 m)	9' (2.74 m)
Horizontal	2' 3" (0.69 m)	2' 5" (0.74 m)	2' 7" (0.79 m)	2' 9" (0.84 m)	2' 11" (0.89 m)	3' 1" (0.94 m)	3' 3" (1 m)
Center of Gravity - Stored							
Vertical	2' 7" (795 mm)	2' 8" (820 mm)	2' 9" (840 mm)	2' 10" (855 mm)	2' 10" (855 mm)	2' 11" (890 mm)	3' (910 mm)
Horizontal	12.8" (325 mm)	12.4" (315 mm)	12" (305 mm)	11.4" (290 mm)	10.8" (275 mm)	10.4" (265 mm)	10" (255 mm)
(C/L Rotation to Bridge)							

* Crane rating (ft-lb) is the rated load (lb) multiplied by the respective distance (ft) from centerline of rotation with all extensions retracted and the inner and outer booms in a horizontal position, per ANSI B30.22. ** Crane weight does not include stabilizers. ***Maximum swing clearance radius required is 20.5" (516 mm) at 6' 9" (2055 mm) from top of chassis frame.

22/153SL LIFTING CAPACITIES

22/153SL - 2 Hydraulic

10450 lb 4740 kg	7185 lb 3260 kg	5445 lb 2470 kg
14' 1" 4.3 m	20' 4" 6.2 m	26' 11" 8.2 m

22/153SL - 3 Hydraulic

10010 lb 4540 kg	6810 lb 3090 kg	5070 lb 2300 kg	4055 lb 1840 kg
14' 5" 4.4 m	20' 8" 6.3 m	26' 11" 8.2 m	33' 6" 10.2 m

22/153SL - 4 Hydraulic

9570 lb 4340 kg	6435 lb 2920 kg	4720 lb 2140 kg	3705 lb 1680 kg	3040 lb 1380 kg
14' 9" 4.5 m	21' 6.4 m	27' 3" 8.3 m	33' 10" 10.3 m	40' 8" 12.4 m

22/153SL - 5 Hydraulic

9195 lb 4170 kg	6105 lb 2770 kg	4410 lb 2000 kg	3395 lb 1540 kg	2735 lb 1240 kg	2295 lb 1040 kg
15' 1" 4.6 m	21' 6.4 m	27' 7" 8.4 m	34' 1" 10.4 m	41' 12.5 m	48' 3" 14.7 m

22/153SL - 6 Hydraulic

8820 lb 4000 kg	5775 lb 2620 kg	4100 lb 1860 kg	3085 lb 1400 kg	2425 lb 1100 kg	1985 lb 900 kg	1655 lb 750 kg
15' 1" 4.6 m	21' 4" 6.5 m	27' 11" 8.5 m	34' 5" 10.5 m	41' 4" 12.6 m	48' 7" 14.8 m	56' 1" 17.1 m

22/153SL - 7 Hydraulic

8530 lb 3870 kg	5535 lb 2510 kg	3880 lb 1760 kg	2890 lb 1310 kg	2225 lb 1010 kg	1785 lb 810 kg	1435 lb 650 kg	1235 lb 560 kg
15' 5" 4.7 m	21' 8" 6.6 m	27' 11" 8.5 m	34' 5" 10.5 m	41' 4" 12.6 m	48' 7" 14.8 m	56' 1" 17.1 m	63' 4" 19.3 m

22/153SL - 8 Hydraulic

8200 lb 3720 kg	5245 lb 2380 kg	3615 lb 1640 kg	2625 lb 1190 kg	1985 lb 900 kg	1545 lb 700 kg	1215 lb 550 kg	1015 lb 460 kg	880 lb 400 kg
15' 9" 4.8 m	22' 6.7 m	28' 3" 8.6 m	34' 9" 10.6 m	41' 8" 12.7 m	48' 11" 14.9 m	56' 5" 17.2 m	63' 8" 19.4 m	70' 10" 21.6 m



SPECIFICATIONS

Stabilizer Pad Diameter	7" (178 mm)
Crane Storage Height	7' 6" (2286 mm)
Mounting Space***	2' 11" (889 mm)
Rotational Torque	19,990 ft-lb (2.8 tm)
Rotation	400°
Optimum Pump Performance	15.9 gpm (60 L/min)
System Pressure	4350 psi (300 Bar)
Oil Reservoir Capacity	23.8 gal (90 L)
Stabilizer Extension Span	
Standard (manual out/hydraulic down)	18' 3" (5563 mm)
Weight	640 lb (290 kg)
Option (hydraulic out/hydraulic down)	21' 2" (6452 mm)
Weight	805 lb (365 kg)

MINIMUM CHASSIS SPECIFICATIONS

Front Axle Rating (GAWR)	14,000 lb
Rear Axle Rating (GAWR)	40,000 lb
Resistance to Bending Moment Minimum	2,295,000 in-lb

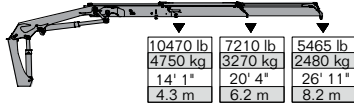
22/153SL SPECIFICATIONS

	2 - Hydraulic	3 - Hydraulic	4 - Hydraulic	5 - Hydraulic	6 - Hydraulic	7 - Hydraulic	8 - Hydraulic
Crane Rating*	148,275 ft-lb (20.5 tm)	144,660 ft-lb (20 tm)	140,320 ft-lb (19.4 tm)	137,425 ft-lb (19 tm)	133,810 ft-lb (18.5 tm)	131,640 ft-lb (18.2 tm)	128,745 ft-lb (17.8 tm)
Max Horizontal Reach	27' 3" (8.3 m)	33' 10" (10.3 m)	41' (12.5 m)	48' 7" (14.8 m)	56' 5" (17.2 m)	63' 8" (19.4 m)	71' 2" (21.7 m)
Max Vertical Reach	35' 1" (10.7 m)	42' (12.8 m)	49' 3" (15 m)	56' 5" (17.2 m)	64' 4" (19.6 m)	71' 10" (21.9 m)	79' 1" (24.1 m)
Max Capacity	17,065 lb (7740 kg)	16,140 lb (7320 kg)	15,255 lb (6920 kg)	14,460 lb (6560 kg)	14,200 lb (6440 kg)	13,560 lb (6150 kg)	12,895 lb (5850 kg)
Max Cap @ Max Reach	5445 lb (2470 kg)	4055 lb (1840 kg)	3040 lb (1380 kg)	2295 lb (1040 kg)	1655 lb (750 kg)	1235 lb (560 kg)	880 lb (400 kg)
Crane Weight**	4180 lb (1895 kg)	4555 lb (2065 kg)	4995 lb (2265 kg)	5325 lb (2415 kg)	5635 lb (2555 kg)	5865 lb (2660 kg)	6050 lb (2745 kg)
Hook Approach							
Vertical	7' 3" (2.21 m)	7' 6" (2.29 m)	7' 10" (2.38 m)	8' 1" (2.47 m)	8' 5" (2.56 m)	8' 8" (2.65 m)	9' (2.74 m)
Horizontal	2' 3" (0.69 m)	2' 5" (0.74 m)	2' 7" (0.79 m)	2' 9" (0.84 m)	2' 11" (0.89 m)	3' 1" (0.94 m)	3' 3" (1 m)
Center of Gravity - Stored							
Vertical	2' 6" (770 mm)	2' 7" (785 mm)	2' 8" (815 mm)	2' 9" (835 mm)	2' 9" (845 mm)	2' 10" (875 mm)	2' 11" (890 mm)
Horizontal	13.6" (345 mm)	13.4" (340 mm)	12.8" (325 mm)	11.8" (300 mm)	11.8" (300 mm)	11.2" (285 mm)	11" (280 mm)
(C/L Rotation to Bridge)							

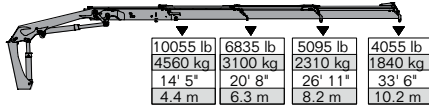
* Crane rating (ft-lb) is the rated load (lb) multiplied by the respective distance (ft) from centerline of rotation with all extensions retracted and the inner and outer booms in a horizontal position, per ANSI B30.22. ** Crane weight does not include stabilizers. ***Maximum swing clearance radius required is 20.5" (516 mm) at 6' 9" (2055 mm) from top of chassis frame.

22/153DL LIFTING CAPACITIES

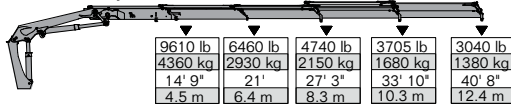
22/153DL - 2 Hydraulic



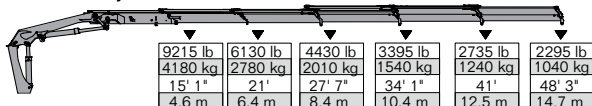
22/153DL - 3 Hydraulic



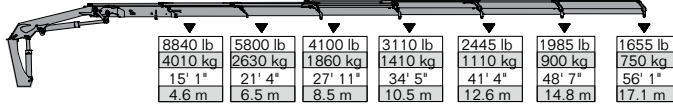
22/153DL - 4 Hydraulic



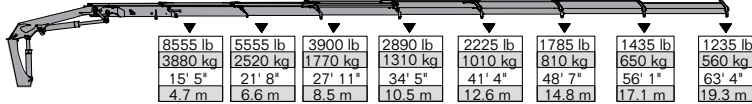
22/153DL - 5 Hydraulic



22/153DL - 6 Hydraulic



22/153DL - 7 Hydraulic



22/153DL - 8 Hydraulic



SPECIFICATIONS

Stabilizer Pad Diameter	7" (178 mm)
Crane Storage Height	7' 6" (2286 mm)
Mounting Space***	2' 11" (889 mm)
Rotational Torque	19,990 ft-lb (2.8 tm)
Rotation	400°
Optimum Pump Performance	15.9 gpm (60 L/min)
System Pressure	4350 psi (300 Bar)
Oil Reservoir Capacity	23.8 gal (90 L)
Stabilizer Extension Span	
Standard (manual out/hydraulic down)	18' 3" (5563 mm)
Weight	640 lb (290 kg)
Option (hydraulic out/hydraulic down)	21' 2" (6452 mm)
Weight	805 lb (365 kg)

MINIMUM CHASSIS SPECIFICATIONS

Front Axle Rating (GAWR)	14,000 lb
Rear Axle Rating (GAWR)	40,000 lb
Resistance to Bending Moment Minimum	2,295,000 in-lb

22/153DL SPECIFICATIONS

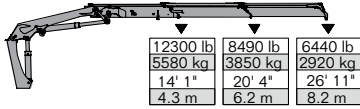
	2 - Hydraulic	3 - Hydraulic	4 - Hydraulic	5 - Hydraulic	6 - Hydraulic	7 - Hydraulic	8 - Hydraulic
Crane Rating*	149,000 ft-lb (20.6 tm)	145,385 ft lb (20.1 tm)	141,045 ft lb (19.5 tm)	138,150 ft lb (19.1 tm)	134,535 ft lb (18.6 tm)	132,365 ft lb (18.3 tm)	128,745 ft lb (17.8 tm)
Max Horizontal Reach	27' 3" (8.3 m)	33' 10" (10.3 m)	41' (12.5 m)	48' 7" (14.8 m)	56' 5" (17.2 m)	63' 8" (19.4 m)	71' 2" (21.7 m)
Max Vertical Reach	35' 1" (10.7 m)	42' (12.8 m)	49' 3" (15 m)	56' 5" (17.2 m)	64' 4" (19.6 m)	71' 10" (21.9 m)	79' 1" (24.1 m)
Max Capacity	17,550 lb (7960 kg)	16,820 lb (7630 kg)	16,115 lb (7310 kg)	15,475 lb (7020 kg)	14,880 lb (6750 kg)	14,330 lb (6500 kg)	13,800 lb (6260 kg)
Max Cap @ Max Reach	5465 lb (2480 kg)	4055 lb (1840 kg)	3040 lb (1380 kg)	2295 lb (1040 kg)	1655 lb (750 kg)	1235 lb (560 kg)	880 lb (400 kg)
Crane Weight **	4365 lb (1980 kg)	4740 lb (2150 kg)	5180 lb (2350 kg)	5510 lb (2500 kg)	5820 lb (2640 kg)	6050 lb (2745 kg)	6240 lb (2830 kg)
Hook Approach							
Vertical	7' 3" (2.21 m)	7' 6" (2.29 m)	7' 10" (2.38 m)	8' 1" (2.47 m)	8' 5" (2.56 m)	8' 8" (2.65 m)	9' (2.74 m)
Horizontal	2' 3" (0.69 m)	2' 5" (0.74 m)	2' 7" (0.79 m)	2' 9" (0.84 m)	2' 11" (0.89 m)	3' 1" (0.94 m)	3' 3" (1 m)
Center of Gravity - Stored							
Vertical	2' 7" (795 mm)	2' 8" (820 mm)	2' 9" (840 mm)	2' 10" (855 mm)	2' 10" (855 mm)	2' 11" (890 mm)	3' (910 mm)
Horizontal	13" (330 mm)	12.8" (325 mm)	12.2" (310 mm)	11.8" (300 mm)	11.4" (290 mm)	10.8" (275 mm)	10.6" (270 mm)
(C/L Rotation to Bridge)							

* Crane rating (ft-lb) is the rated load (lb) multiplied by the respective distance (ft) from centerline of rotation with all extensions retracted and the inner and outer booms in a horizontal position, per ANSI B30.22. ** Crane weight does not include stabilizers. ***Maximum swing clearance radius required is 20.5" (516 mm) at 6' 9" (2055 mm) from top of chassis frame.

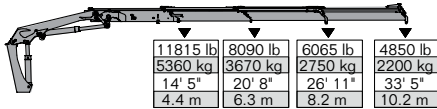
26/180SL LIFTING CAPACITIES



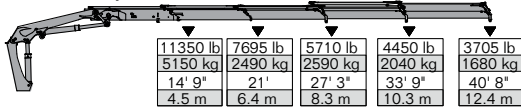
26/180SL - 2 Hydraulic



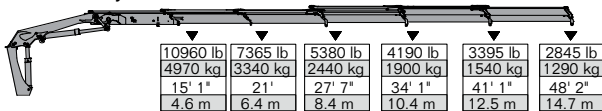
26/180SL - 3 Hydraulic



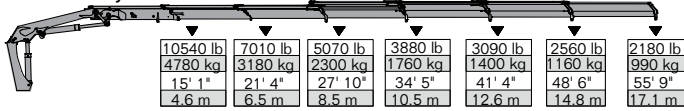
26/180SL - 4 Hydraulic



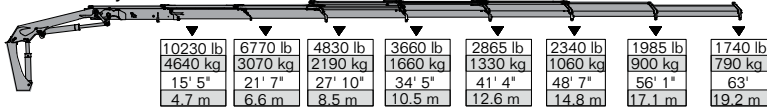
26/180SL - 5 Hydraulic



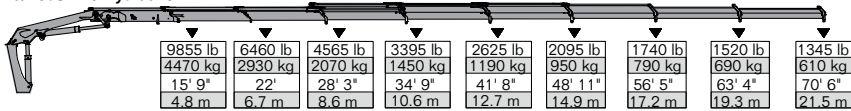
26/180SL - 6 Hydraulic



26/180SL - 7 Hydraulic



26/180SL - 8 Hydraulic



SPECIFICATIONS

Stabilizer Pad Diameter	7" (178 mm)
Crane Storage Height	7' 6" (2286 mm)
Mounting Space***	2' 11" (889 mm)
Rotational Torque	19,990 ft-lb (2.8 tm)
Rotation	400°
Optimum Pump Performance	
Fixed	18.5 gpm (70 L/min)
Variable	26.4 gpm (100 L/min)
System Pressure	4785 psi (330 bar)
Oil Reservoir Capacity	23.8 gal (90 L)
Stabilizer Extension Span	
Standard (manual out/hydraulic down)	18' 3" (5563 mm)
Weight	640 lb (290 kg)
Option (hydraulic out/hydraulic down)	21' 2" (6452 mm)
Weight	805 lb (365 kg)

MINIMUM CHASSIS SPECIFICATIONS

Front Axle Rating (GAWR)	14,000 lb
Rear Axle Rating (GAWR)	40,000 lb
Resistance to Bending Moment Minimum	2,700,000 in-lb

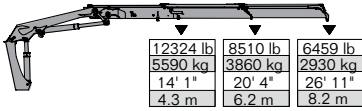
26/180SL SPECIFICATIONS

	2 - Hydraulic	3 - Hydraulic	4 - Hydraulic	5 - Hydraulic	6 - Hydraulic	7 - Hydraulic	8 - Hydraulic
Crane Rating*	164,910 ft-lb (22.8 tm)	161,295 ft-lb (22.3 tm)	166,740 ft-lb (21.7 tm)	163,853 ft-lb (21.3 tm)	159,853 ft-lb (20.8 tm)	158,078 ft-lb (21.9 tm)	154,469 ft-lb (21.4 tm)
Max Horizontal Reach	27' 3" (8.3 m)	33' 10" (10.3 m)	41' (12.5 m)	48' 6" (14.8 m)	56' 5" (17.2 m)	63' 8" (19.4 m)	71' 2" (21.7 m)
Max Vertical Reach	35' 1" (10.7 m)	42' (12.8 m)	49' 3" (15 m)	56' 5" (17.2 m)	64' 4" (19.6 m)	71' 10" (21.9 m)	79' 1" (24.1 m)
Max Capacity	18,940 lb (8590 kg)	17,945 lb (8140 kg)	17,000 lb (7710 kg)	16,160 lb (7330 kg)	15,895 lb (7650 kg)	15,190 lb (6890 kg)	14,485 lb (6570 kg)
Max Cap @ Max Reach	6085 lb (2760 kg)	4565 lb (2070 kg)	3460 lb (1570 kg)	2600 lb (1180 kg)	1920 lb (870 kg)	1475 lb (670 kg)	1125 lb (510 kg)
Crane Weight **	4180 lb (1895 kg)	4555 lb (2065 kg)	4995 lb (2265 kg)	5325 lb (2415 kg)	5635 lb (2555 kg)	5865 lb (2660 kg)	6050 lb (2745 kg)
Hook Approach							
Vertical	7' 3" (2.21 m)	7' 6" (2.29 m)	7' 10" (2.38 m)	8' 1" (2.47 m)	8' 5" (2.56 m)	8' 8" (2.65 m)	9' (2.74 m)
Horizontal	2' 3" (0.69 m)	3' 1" (0.94 m)	2' 11" (0.89 m)	2' 9" (0.84 m)	2' 7" (0.79 m)	2' 5" (0.74 m)	3' 3" (1 m)
Center of Gravity - Stored							
Vertical	2' 6" (770 mm)	2' 7" (785 mm)	2' 8" (815 mm)	2' 9" (835 mm)	2' 9" (845 mm)	2' 10" (875 mm)	2' 11" (890 mm)
Horizontal	13.6" (345 mm)	13.4" (340 mm)	12.8" (325 mm)	12.2" (310 mm)	11.8" (300 mm)	11.2" (285 mm)	11" (280 mm)

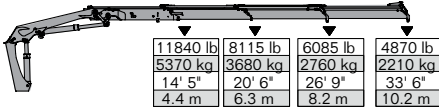
* Crane rating (ft-lb) is the rated load (lb) multiplied by the respective distance (ft) from centerline of rotation with all extensions retracted and the inner and outer booms in a horizontal position, per ANSI B30.22. ** Crane weight does not include stabilizers. ***Maximum swing clearance radius required is 20.5" (516 mm) at 6' 9" (2055 mm) from top of chassis frame.

26/180DL LIFTING CAPACITIES

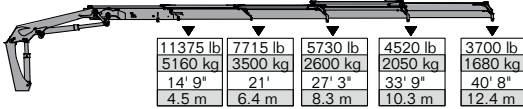
26/180DL - 2 Hydraulic



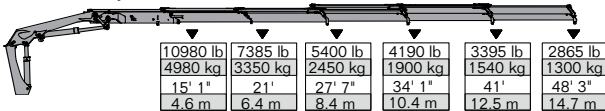
26/180DL - 3 Hydraulic



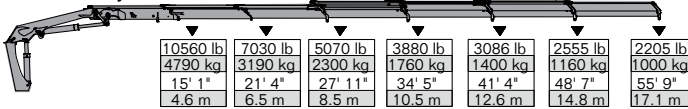
26/180DL - 4 Hydraulic



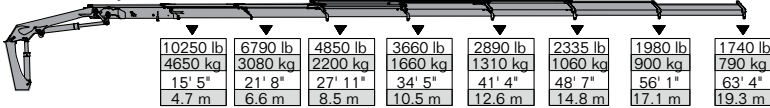
26/180DL - 5 Hydraulic



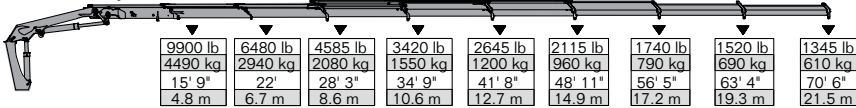
26/180DL - 6 Hydraulic



26/180DL - 7 Hydraulic



26/180DL - 8 Hydraulic



SPECIFICATIONS

Stabilizer Pad Diameter	7" (178 mm)
Crane Storage Height	7' 6" (2286 mm)
Mounting Space***	2' 11" (889 mm)
Rotational Torque	19,990 ft-lb (2.8 tm)
Rotation	400°
Optimum Pump Performance	
Fixed	18.5 gpm (70 L/min)
Variable	26.4 gpm (100 L/min)
System Pressure	4785 psi (330 bar)
Oil Reservoir Capacity	23.8 gal (90 L)
Stabilizer Extension Span	
Standard (manual out/hydraulic down)	18' 3" (5563 mm)
Weight	640 lb (290 kg)
Option (hydraulic out/hydraulic down)	21' 2" (6452 mm)
Weight	805 lb (365 kg)

MINIMUM CHASSIS SPECIFICATIONS

Front Axle Rating (GAWR)	14,000 lb
Rear Axle Rating (GAWR)	40,000 lb
Resistance to Bending Moment	2,700,000 in-lb
Minimum	

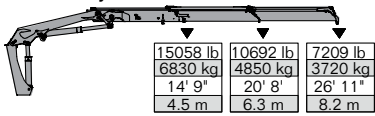
26/180DL SPECIFICATIONS

	2 - Hydraulic	3 - Hydraulic	4 - Hydraulic	5 - Hydraulic	6 - Hydraulic	7 - Hydraulic	8 - Hydraulic
Crane Rating*	165,635 ft-lb (22.9 tm)	162,020 ft-lb (22.4 tm)	157,680 ft-lb (21.8 tm)	154,785 ft-lb (21.4 tm)	151,170 ft-lb (20.9 tm)	149,000 ft-lb (20.6 tm)	145,385 ft-lb (20.1 tm)
Max Horizontal Reach	27' 3" (8.3 m)	33' 10" (10.3 m)	41' (12.5 m)	48' 6" (14.8 m)	56' 5" (17.2 m)	63' 8" (19.4 m)	71' 2" (21.7 m)
Max Vertical Reach	35' 1" (10.7 m)	42' (12.8 m)	49' 3" (15 m)	56' 5" (17.2 m)	64' 4" (19.6 m)	71' 10" (21.9 m)	79' 1" (24.1 m)
Max Capacity	19,355 lb (8780 kg)	18,585 lb (8430 kg)	17,790 lb (8070 kg)	17,130 lb (7770 kg)	16,470 lb (7470 kg)	15,875 lb (7200 kg)	15,300 lb (6940 kg)
Max Cap @ Max Reach	6085 lb (2760 kg)	4565 lb (2070 kg)	3460 lb (1570 kg)	2600 lb (1180 kg)	1920 lb (870 kg)	1475 lb (670 kg)	1125 lb (510 kg)
Crane Weight **	4365 lb (1980 kg)	4740 lb (2150 kg)	5180 lb (2350 kg)	5510 lb (2500 kg)	5820 lb (2640 kg)	6050 lb (2745 kg)	6240 lb (2830 kg)
Hook Approach							
Vertical	7' 3" (2.21 m)	7' 6" (2.29 m)	7' 10" (2.38 m)	8' 1" (2.47 m)	8' 5" (2.56 m)	8' 8" (2.65 m)	9' (2.74 m)
Horizontal	2' 3" (0.69 m)	3' 1" (0.94 m)	2' 11" (0.89 m)	2' 9" (0.84 m)	2' 7" (0.79 m)	2' 5" (0.74 m)	3' 3" (1 m)
Center of Gravity - Stored							
Vertical	2' 7" (795 mm)	2' 8" (820 mm)	2' 9" (840 mm)	2' 10" (855 mm)	2' 10" (855 mm)	2' 11" (890 mm)	3' (910 mm)
Horizontal	13" (330 mm)	12.8" (325 mm)	12.2" (310 mm)	11.8" (300 mm)	11.4" (290 mm)	10.8" (275 mm)	10.6" (270 mm)
(C/L Rotation to Bridge)							

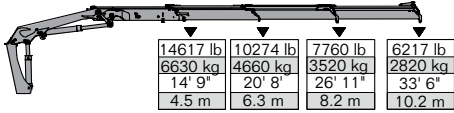
* Crane rating (ft-lb) is the rated load (lb) multiplied by the respective distance (ft) from centerline of rotation with all extensions retracted and the inner and outer booms in a horizontal position, per ANSI B30.22. ** Crane weight does not include stabilizers. ***Maximum swing clearance radius required is 20.5" (516 mm) at 6' 9" (2055 mm) from top of chassis frame.

32/222 LIFTING CAPACITIES

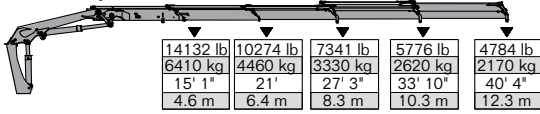
32/222 - 2 Hydraulic



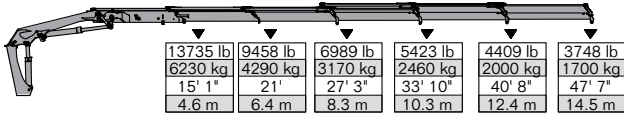
32/222 - 3 Hydraulic



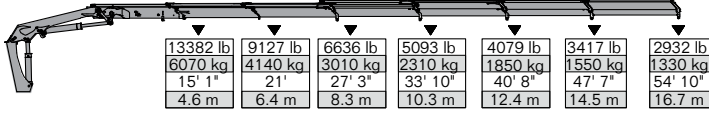
32/222 - 4 Hydraulic



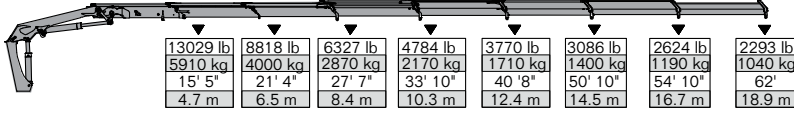
32/222 - 5 Hydraulic



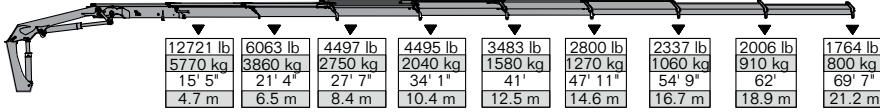
32/222 - 6 Hydraulic



32/222 - 7 Hydraulic



32/222 - 8 Hydraulic



SPECIFICATIONS

Stabilizer Pad Diameter	8" (203 mm)
Crane Storage Height	7' 9" (2362 mm)
Mounting Space***	3' 4" (1016 mm)
Rotational Torque	28,027 ft-lb (3.9 tm)
Rotation	Continuous
Optimum Pump Performance	
Fixed	21.1 gpm (80 L/min)
Variable	29 gpm (110 L/min)
System Pressure	5295 psi (365 bar)
Oil Reservoir Capacity	42.3 gal (160 L)
Stabilizer Extension Span	
Minimum (2 beams - 64" [1626 mm] long)	18' 3" (5563 mm)
Maximum (2 beams - 108" [2743 mm] long)	21' 1" (6426 mm)
Stabilizer Weights	
Stabilizer Beam 64" (1626 mm)	298 lb (135 kg)
Stabilizer Beam 81" (2057 mm)	397 lb (180 kg)
Stabilizer Cylinder, 1x swing-up	110 lb (50 kg)
MINIMUM CHASSIS SPECIFICATIONS	
Front Axle Rating (GAWR)	16,000 lb
Rear Axle Rating (GAWR)	40,000 lb
Resistance to Bending Moment	3,330,000 in-lb
Minimum	

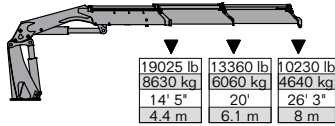
32/222 SPECIFICATIONS

	2 - Hydraulic	3 - Hydraulic	4 - Hydraulic	5 - Hydraulic	6 - Hydraulic	7 - Hydraulic	8 - Hydraulic
Crane Rating*	222,050 ft-lb (30.7 tm)	215,540 ft-lb (29.8 tm)	213,370 ft-lb (29.5 tm)	207,590 ft-lb (28.7 tm)	201,800 ft-lb (27.9 tm)	201,080 ft-lb (27.8)	196,010 ft-lb (27.1 tm)
Max Horizontal Reach	26' 11" (8.2 m)	33' 6" (10.2 m)	40' 4" (12.3 m)	47' 7" (14.5 m)	54' 10" (16.7 m)	62' 1" (18.9 m)	69' 7" (21.2 m)
Max Vertical Reach	35' 2" (10.7 m)	41' 9" (12.7 m)	48' 7" (14.8 m)	55' 10" (17 m)	63' 1" (19.2 m)	70' 4" (21.4 m)	77' 10" (23.7 m)
Max Capacity	15,058 lb (6830 kg)	14,617 lb (6630 kg)	14,132 lb (6410 kg)	13,735 lb (6230 kg)	13,382 lb (6070 kg)	13,029 lb (5910 kg)	12,721 lb (5770 kg)
Max Cap @ Max Reach	7209 lb (3720 kg)	6217 lb (2820kg)	4784 lb (2170 kg)	3748 lb (1564 kg)	2932 lb (1330 kg)	2293 (1040 kg)	1764 lb (800 kg)
Crane Weight **	5710 lb (2590 kg)	6151 lb (2790 kg)	6592 lb (2990 kg)	6967 lb (3160 kg)	7319 lb (3320 kg)	7650 lb (3470 kg)	7926 lb (3595 kg)
Hook Approach							
Vertical	8' 3" (2.5 m)	8' 1" (2.5 m)	7' 11" (2.4 m)	7' 9" (2.4 m)	7' 8" (2.3 m)	7' 7" (2.3 m)	7' 5" (2.3 m)
Horizontal	27' 2" (8.2 m)	33' 9" (10.3 m)	40' 8" (12.4 m)	47' 10" (14.6 m)	55' 1" (16.8 m)	62' 4" (19 m)	69' 10" (21.3 m)
Center of Gravity - Stored							
Vertical	2' 9" (825 mm)	2' 9" (845 mm)	2' 10" (870 mm)	2' 11" (875 mm)	3' 11" (885 mm)	2' 12" (900 mm)	3' (920 mm)
Horizontal	13.2" (335 mm)	13.2" (335 mm)	12.8" (325 mm)	12.6" (320 mm)	12.4" (315 mm)	12" (305 mm)	11.6" (295 mm)
(C/L Rotation to Bridge)							

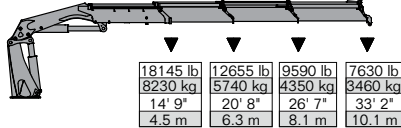
* Crane rating (ft-lb) is the rated load (lb) multiplied by the respective distance (ft) from centerline of rotation with all extensions retracted and the inner and outer booms in a horizontal position, per ANSI B30.22. ** Crane weight does not include stabilizers. *** Maximum swing clearance radius required is 1'-5" (427 mm) at 8'-1" (2465 mm) from top of chassis frame.

40/275 LIFTING CAPACITIES

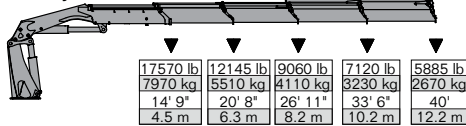
40/275 - 2 Hydraulic



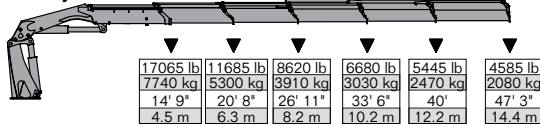
40/275 - 3 Hydraulic



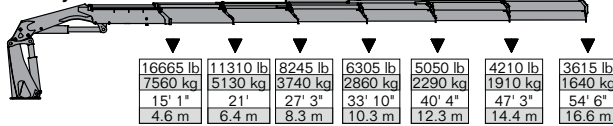
40/275 - 4 Hydraulic



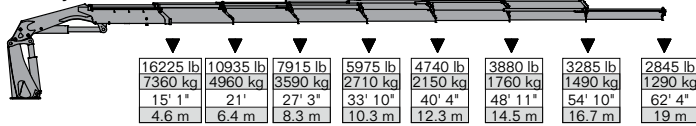
40/275 - 5 Hydraulic



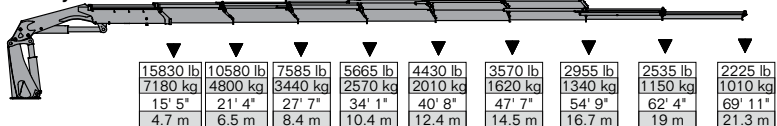
40/275 - 6 Hydraulic



40/275 - 7 Hydraulic



40/275 - 8 Hydraulic



SPECIFICATIONS

Stabilizer Pad Diameter	8" (203 mm)
Crane Storage Height	7' 10" (2388 mm)
Mounting Space***	3' 9" (1143 mm)
Rotational Torque	29,500 ft-lb (4.1 tm)
Rotation	Continuous
Optimum Pump Performance	
Fixed	21.1 gpm (80 L/min)
Variable	29 gpm (110 L/min)
System Pressure	5295 psi (365 bar)
Oil Reservoir Capacity	66 gal (250 L)
Stabilizer Extension Span	
Minimum (2 beams - 64" [1626 mm] long)	18' 3" (5563 mm)
Maximum (2 beams - 108" [2743 mm] long)	25' 6" (7772 mm)
Stabilizer Weights	
Stabilizer Beam 64" (1626 mm)	375 lb (170 kg)
Stabilizer Beam 81" (2057 mm)	585 lb (265 kg)
Stabilizer Beam 108" (2743 mm)	640 lb (290 kg)
Stabilizer Cylinder, 1x swing-up	145 lb (65 kg)
Stabilizer Cylinder, 1x hydraulic swing-up	160 lb (72 kg)
MINIMUM CHASSIS SPECIFICATIONS	
Front Axle Rating (GAWR)	16,000 lb
Rear Axle Rating (GAWR)	40,000 lb
Resistance to Bending Moment Minimum	4,125,000 in-lb

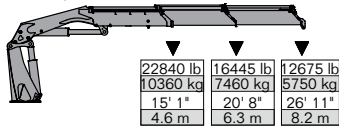
40/275 SPECIFICATIONS

	2 - Hydraulic	3 - Hydraulic	4 - Hydraulic	5 - Hydraulic	6 - Hydraulic	7 - Hydraulic	8 - Hydraulic
Crane Rating*	274,855 ft-lb (38 tm)	267,620 ft-lb (37 tm)	259,665 ft-lb (35.9 tm)	252,430 ft-lb (34.9 tm)	250,985 ft-lb (34.7 tm)	245,200 ft-lb (33.7 tm)	243,750 ft-lb (33.7 tm)
Max Horizontal Reach	26' 3" (8 m)	33' 2" (10.1 m)	40' (12.2 m)	47' 3" (14.4 m)	54' 6" (16.6 m)	62' 4" (19 m)	69' 11" (21.3 m)
Max Vertical Reach	35' 4" (10.8 m)	42' 3" (12.9 m)	49' (15 m)	56' 3" (17.1 m)	63' 3" (19.3 m)	71' 1" (21.7 m)	79' (24.1 m)
Max Capacity	19,025 lb (8630 kg)	18,145 lb (8230 kg)	17,570 lb (7970 kg)	17,065 lb (7740 kg)	16,665 lb (7560 kg)	16,225 lb (7360 kg)	15,830 lb (7180 kg)
Max Cap @ Max Reach	10,230 lb (4640 kg)	7630 lb (3460 kg)	5885 lb (2670 kg)	4585 lb (2080 kg)	3615 lb (1640 kg)	2845 lb (1290 kg)	2225 lb (1010 kg)
Crane Weight **	7165 lb (3250 kg)	7740 lb (3510 kg)	8290 lb (3760 kg)	8820 lb (4000 kg)	9215 lb (4180 kg)	9570 lb (4340 kg)	9920 lb (4500 kg)
Hook Approach							
Vertical	9' 4" (2.8 m)	9' (2.7 m)	8' 10" (2.7 m)	8' 8" (2.6 m)	8' 5" (2.6 m)	8' 3" (2.5 m)	8' 1" (2.5 m)
Horizontal	3' 11" (1.2 m)	4' 1" (1.2 m)	4' 3" (1.3 m)	4' 5" (1.4 m)	4' 7" (1.4 m)	4' 9" (1.5 m)	4' 11" (1.5 m)
Center of Gravity - Stored							
Vertical	2' 10" (869 mm)	2' 11" (884 mm)	3' (914 mm)	3' (914 mm)	3' 1" (930 mm)	3' 2" (945 mm)	3' 2" (945 mm)
Horizontal	12.6" (320 mm)	12.6" (320 mm)	12.2" (310 mm)	11.8" (300 mm)	11.6" (295 mm)	11.4" (290 mm)	11.2" (285 mm)
(C/L Rotation to Bridge)							

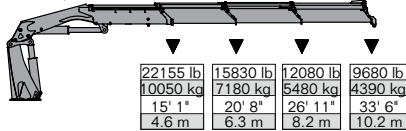
* Crane rating (ft-lb) is the rated load (lb) multiplied by the respective distance (ft) from centerline of rotation with all extensions retracted and the inner and outer booms in a horizontal position, per ANSI B30.22. ** Crane weight does not include stabilizers. ***Maximum swing clearance radius required is 20.5" (516 mm) at 6' 9" (2055 mm) from top of chassis frame.

50/345 LIFTING CAPACITIES

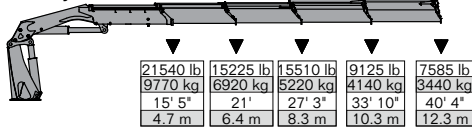
50/345 - 2 Hydraulic



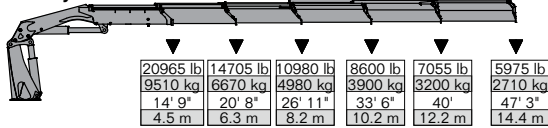
50/345 - 3 Hydraulic



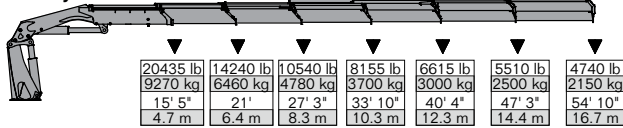
50/345 - 4 Hydraulic



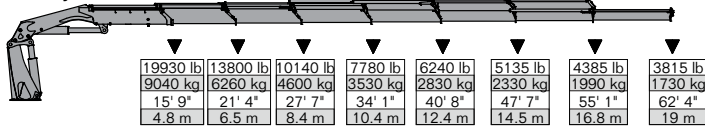
50/345 - 5 Hydraulic



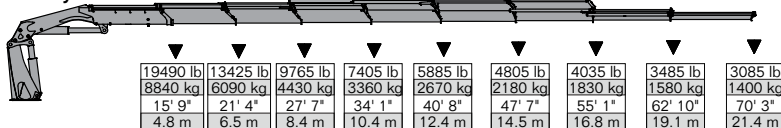
50/345 - 6 Hydraulic



50/345 - 7 Hydraulic



50/345 - 8 Hydraulic



SPECIFICATIONS

Stabilizer Pad Diameter	8" (203 mm)
Crane Storage Height	7' 10" (2388 mm)
Mounting Space***	3' 11" (1194 mm)
Rotational Torque	36,880 ft-lb (5.1 tm)
Rotation	Continuous
Optimum Pump Performance	
Fixed	21.1 gpm (80 L/min)
Variable	29 gpm (110 L/min)
System Pressure	5295 psi (365 bar)
Oil Reservoir Capacity	66 gal (250 L)
Stabilizer Extension Span	
Minimum (2 beams - 64" [1626 mm] long)	18' 3" (5563 mm)
Maximum (2 beams - 108" [2743 mm] long)	25' 6" (7772 mm)
Stabilizer Weights	
Stabilizer Beam 64" (1626 mm)	410 lb (185 kg)
Stabilizer Beam 81" (2057 mm)	630 lb (285 kg)
Stabilizer Beam 108" (2743 mm)	685 lb (310 kg)
Stabilizer Cylinder, 1x swing-up	145 lb (65 kg)
Stabilizer Cylinder, 1x hydraulic swing-up	160 lb (72 kg)

MINIMUM CHASSIS SPECIFICATIONS

Front Axle Rating (GAWR)	20,000 lb
Rear Axle Rating (GAWR)	40,000 lb
Resistance to Bending Moment Minimum	5,175,000 in-lb

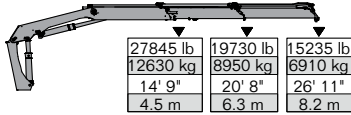
50/345 SPECIFICATIONS

	2 - Hydraulic	3 - Hydraulic	4 - Hydraulic	5 - Hydraulic	6 - Hydraulic	7 - Hydraulic	8 - Hydraulic
Crane Rating*	345,015 ft-lb (47.7 tm)	334,165 ft-lb (46.2 tm)	331,995 ft-lb (45.9 tm)	323,315 ft-lb (44.7 tm)	315,360 ft-lb (43.6 tm)	313,910 ft-lb (43.4 tm)	306,680 ft-lb (42.4 tm)
Max Horizontal Reach	26' 11" (8.2 m)	33' 6" (10.2 m)	40' 4" (12.3 m)	47' 3" (14.4 m)	54' 9" (16.7 m)	62' 4" (19 m)	70' 3" (21.4 m)
Max Vertical Reach	35' 4" (10.8 m)	42' 4" (12.9 m)	49' (15 m)	56' 3" (17.1 m)	63' 2" (19.3 m)	71' 2" (21.7 m)	78' 11" (24.1 m)
Max Capacity	22,840 lb (10,360 kg)	22,155 lb (10,050 kg)	21,540 lb (9770 kg)	20,965 lb (9510 kg)	20,435 lb (9270 kg)	19,930 lb (9040 kg)	19,490 lb (8840 kg)
Max Cap @ Max Reach	12,675 lb (5750 kg)	9680 lb (4390 kg)	7585 lb (3440 kg)	5975 lb (2710 kg)	4740 lb (2150 kg)	3815 lb (1730 kg)	3085 lb (1400 kg)
Crane Weight **	8180 lb (3710 kg)	8820 lb (4000 kg)	9415 lb (4270 kg)	9965 lb (4520 kg)	10,405 lb (4720 kg)	10,805 lb (4900 kg)	11,190 lb (5075 kg)
Hook Approach							
Vertical	9' 5" (2900 mm)	9' 1" (2800 mm)	8' 11" (2700 mm)	8' 9" (2700 mm)	8' 7" (2600 mm)	8' 5" (2600 mm)	8' 3" (2500 mm)
Horizontal	3' 11" (1200 mm)	4' 1" (1200 mm)	4' 3" (1300 mm)	4' 5" (1400 mm)	4' 7" (1400 mm)	4' 9" (1500 mm)	4' 11" (1500 mm)
Center of Gravity - Stored							
Vertical	3' 1" (927 mm)	3' 1" (927 mm)	3' 2" (945 mm)	3' 2" (945 mm)	3' 2" (945 mm)	3' 3" (975 mm)	3' 3" (975 mm)
Horizontal	14.5" (368 mm)	14.5" (368 mm)	14.3" (363 mm)	14.1" (358 mm)	13.9" (353 mm)	13.7" (348 mm)	13.5" (343 mm)

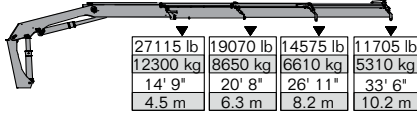
* Crane rating (ft-lb) is the rated load (lb) multiplied by the respective distance (ft) from centerline of rotation with all extensions retracted and the inner and outer booms in a horizontal position, per ANSI B30.22. ** Crane weight does not include stabilizers. ***Maximum swing clearance radius required is 20.5" (516 mm) at 6' 9" (2055 mm) from top of chassis frame.

60/427 LIFTING CAPACITIES

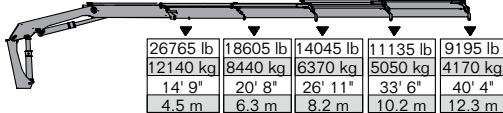
60/427 - 2 Hydraulic



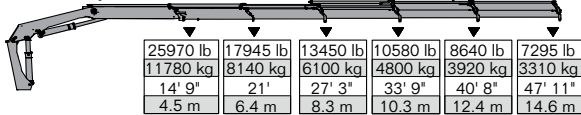
60/427 - 3 Hydraulic



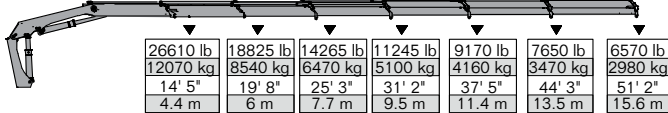
60/427 - 4 Hydraulic



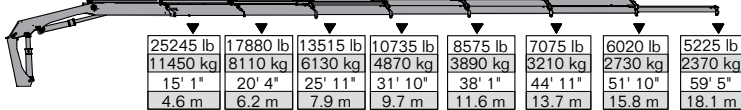
60/427 - 5 Hydraulic



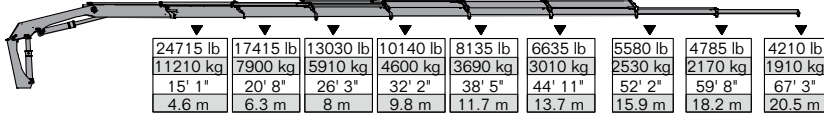
60/427 - 6 Hydraulic



60/427 - 7 Hydraulic



60/427 - 8 Hydraulic



SPECIFICATIONS

Stabilizer Pad Diameter	7.9" (201 mm)
Crane Storage Height	7' 11" (2413 mm)
Mounting Space***	
(K2 - K5)	4' 4" (1320 mm)
(K6 - K8)	4' 9" (1448 mm)
(K6 with K6 FJ1200)	5' 2" (1575 mm)
Rotational Torque	50,630 ft-lb (7 tm)
Rotation	Continuous
Optimum Pump Performance	
Fixed	21.1 gpm (80 L/min)
Variable	29 gpm (110 L/min)
System Pressure	5075 psi (350 bar)
Oil Reservoir Capacity	Standard 66 gal (250 L) Optional 85 gal (320 L)
Stabilizer Extension Span	
Standard (hydraulic out/hydraulic down)	27' 7" (8407 mm)
Weight	1545 lb (700 kg)

MINIMUM CHASSIS SPECIFICATIONS

Front Axle Rating (GAWR)	20,000 lb
Rear Axle Rating (GAWR)	46,000 lb
Resistance to Bending Moment Minimum	6,405,000 in-lb

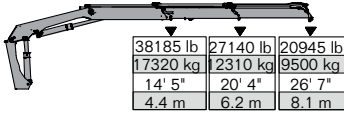
60/427 SPECIFICATIONS

	2 - Hydraulic	3 - Hydraulic	4 - Hydraulic	5 - Hydraulic	6 - Hydraulic	7 - Hydraulic	8 - Hydraulic
Crane Rating*	409,390 ft-lb (56.6 tm)	398,540 ft-lb (55.1 tm)	391,305 ft-lb (54.1 tm)	386,240 ft-lb (53.4 tm)	382,625 ft-lb (52.9 tm)	378,285 ft-lb (52.3 tm)	373,225 ft-lb (51.6 tm)
Max Horizontal Reach	27' 3" (8.3 m)	34' 1" (10.4 m)	40' 8" (12.4 m)	48' 3" (14.7 m)	51' 10" (15.8 m)	59' 9" (18.2 m)	67' 7" (20.6 m)
Max Vertical Reach	36' 5" (11.1 m)	43' (13.1 m)	49' 6" (15.1 m)	56' 9" (17.3 m)	61' 8" (18.8 m)	69' 3" (21.1 m)	76' 9" (23.4 m)
Max Capacity	27,845 lb (12,630 kg)	27,115 lb (12,300 kg)	26,765 lb (12,140 kg)	25,970 lb (11,780 kg)	26,610 lb (12,070 kg)	25,245 lb (11,450 kg)	24,715 lb (11,210 kg)
Max Cap @ Max Reach	15,235 lb (6910 kg)	11,705 lb (5310 kg)	9195 lb (4170 kg)	7295 lb (3310 kg)	6570 lb (2980 kg)	5225 lb (2370 kg)	4210 lb (1910 kg)
Crane Weight **	9735 lb (4415 kg)	10,395 lb (4715 kg)	11,055 lb (5015 kg)	11,650 lb (5285 kg)	12,050 lb (5465 kg)	12,490 lb (5665 kg)	12,930 lb (5865 kg)
Hook Approach							
Vertical	10' 6" (3.2 m)	10' 2" (3.1 m)	9' 10" (3 m)	9' 6" (2.9 m)	10' 2" (3.1 m)	9' 2" (2.8 m)	9' 2" (2.8 m)
Horizontal	4' 11" (1.5 m)	4' 11" (1.5 m)	4' 11" (1.5 m)	4' 11" (1.5 m)	4' 11" (1.5 m)	4' 11" (1.5 m)	4' 11" (1.5 m)
Center of Gravity - Stored							
Vertical	3' 1" (930 mm)	3' 1" (945 mm)	3' 1" (950 mm)	3' 2" (960 mm)	3' 2" (960 mm)	3' 2" (969 mm)	3' 3" (983 mm)
Horizontal	12.1" (308 mm)	12" (305 mm)	12.2" (310 mm)	12" (306 mm)	12.3" (313 mm)	12.2" (309 mm)	12" (304 mm)
(C/L Rotation to Bridge)							

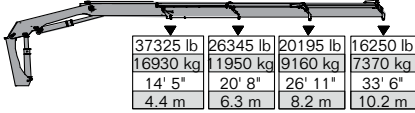
* Crane rating (ft-lb) is the rated load (lb) multiplied by the respective distance (ft) from centerline of rotation with all extensions retracted and the inner and outer booms in a horizontal position, per ANSI B30.22. ** Crane weight does not include stabilizers. ***Maximum swing clearance radius required is 20.5" (516 mm) at 6' 9" (2055 mm) from top of chassis frame.

80/565 LIFTING CAPACITIES

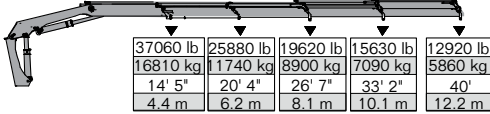
80/565 - 2 Hydraulic



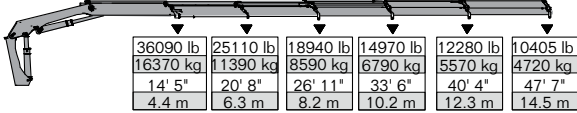
80/565 - 3 Hydraulic



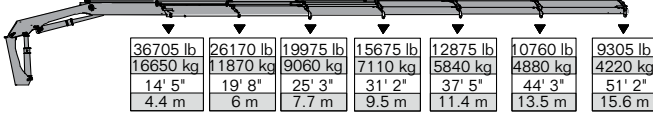
80/565 - 4 Hydraulic



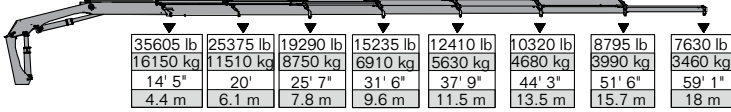
80/565 - 5 Hydraulic



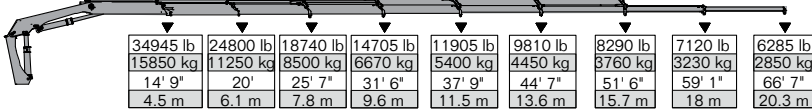
80/565 - 6 Hydraulic



80/565 - 7 Hydraulic



80/565 - 8 Hydraulic



SPECIFICATIONS

Stabilizer Pad Diameter	7.9" (201 mm)
Crane Storage Height	8' 2" (2489 mm)
Mounting Space*** (K2 - K5)	4' 8" (1422 mm)
(K6 - K8)	5' 2" (1575 mm)
(K6 with K6 FJ1200)	5' 6" (1676 mm)
Rotational Torque	57,865 ft-lb (8 tm)
Rotation	Continuous
Optimum Pump Performance	
Fixed	21.1 gpm (80 L/min)
Variable	29 gpm (110 L/min)
System Pressure	5075 psi (350 bar)
Oil Reservoir Capacity	Standard 66 gal (250 L) Optional 85 gal (320 L)
Stabilizer Extension Span	
Standard (hydraulic out/hydraulic down)	27' 7" (8407 mm)
Weight	2260 lb (1025 kg)

MINIMUM CHASSIS SPECIFICATIONS

Front Axle Rating (GAWR)	20,000 lb
Rear Axle Rating (GAWR)	46,000 lb
Resistance to Bending Moment Minimum	8,475,000 in-lb

80/565 SPECIFICATIONS

	2 - Hydraulic	3 - Hydraulic	4 - Hydraulic	5 - Hydraulic	6 - Hydraulic***	7 - Hydraulic	8 - Hydraulic
Crane Rating*	557,665 ft-lb (77.1 tm)	500,525 ft-lb (69.2 tm)	491,845 ft-lb (68 tm)	486,060 ft-lb (67.2 tm)	483,890 ft-lb (66.9 tm)	477,380 ft-lb (66 tm)	471,595 ft-lb (65.2 tm)
Max Horizontal Reach	27' 3" (8.3 m)	33' 9" (10.3 m)	40' 8" (12.4 m)	47' 11" (14.6 m)	51' 10" (15.8 m)	59' 5" (18.1 m)	66' 11" (20.4 m)
Max Vertical Reach	36' 5" (11.1 m)	43' (13.1 m)	49' 6" (15.1 m)	57' 5" (17.5 m)	64' 8" (19.7 m)	68' 11" (21 m)	76' 9" (23.4 m)
Max Capacity	35,410 lb (16,060 kg)	34,590 lb (15,690 kg)	34,280 lb (15,550 kg)	33,355 lb (15,130 kg)	33,600 lb (15,240 kg)	32,870 lb (14,910 kg)	32,210 lb (14,610 kg)
Max Cap @ Max Reach	19,380 lb (8790 kg)	14,990 lb (6800 kg)	11,885 lb (5390 kg)	9500 lb (4310 kg)	8530 lb (3870 kg)	6900 lb (3130 kg)	5645 lb (2560 kg)
Crane Weight **	12,345 lb (5600 kg)	13,120 lb (5950 kg)	13,865 lb (6290 kg)	14,540 lb (6595 kg)	14,990 lb (6800 kg)	15,565 lb (7060 kg)	16,025 lb (7270 kg)
Hook Approach							
Vertical	10' 6" (3.2 m)	10' 3" (3.1 m)	10' 3" (3.1 m)	9' 10" (3 m)	9' 6" (2.9 m)	9' 10" (3 m)	9' 6" (2.9 m)
Horizontal	2' 11" (0.9 m)	3' 3" (1 m)	3' 3" (1 m)	4' (1.2 m)	4' 3" (1.3 m)	4' 7" (1.4 m)	4' 11" (1.5 m)
Center of Gravity - Stored							
Vertical	37.8" (961 mm)	38.3" (972 mm)	38.5" (977 mm)	39" (990 mm)	38.7" (983 mm)	39.1" (992 mm)	39.3" (1000 mm)
Horizontal	0.7" (18 mm)	1.7" (43 mm)	2.6" (66 mm)	3" (75 mm)	3.9" (100 mm)	4.6" (117 mm)	5.1" (130 mm)

* Crane rating (ft-lb) is the rated load (lb) multiplied by the respective distance (ft) from centerline of rotation with all extensions retracted and the inner and outer booms in a horizontal position, per ANSI B30.22. ** Crane weight does not include stabilizers. ***Maximum swing clearance radius required is 20.5" (516 mm) at 6' 9" (2055 mm) from top of chassis frame.

> CRANE ACCESSORIES

Articulating Crane Technical Specifications

GRAPPLES AND BUCKETS

Many different grapples and buckets can be mounted on IMT articulating cranes. These accessories make handling a variety of types of material, from organic waste to rocks to building materials, much easier.

Note: Contact IMT for specific options for a particular crane or application, as not all options can be used on all cranes.



Clamshell Bucket



Barrier Lifter



Refuse Lifter



Logging Grapple



Multi-Purpose Grapple



Rock Grapple



Railroad Grapple



Orange-Peel Grapple



Pole Manipulator

> CRANE ACCESSORIES

Articulating Crane Technical Specifications

OPERATION ACCESSORIES

A number of options and accessories can be purchased with the crane, or as an aftermarket item, to meet the specific requirements of your task.

Note: Contact IMT for specific options for a particular crane or application, as not all options can be used on all cranes.

RADIO REMOTE CONTROLS



STABILIZER AND STABILIZER ACCESSORIES



Standard Stabilizer Foot



Optional Stabilizer Foot



Stabilizer Pads

SAFETY OPTIONS



RCL (Rated Capacity Limitation) Safety System



Overload Light Tower



EVS Electronic Vehicle Stability



2-Stage LMB (Load Moment Limitation) system



Stabilizer Interlocks

WINCHES



OIL COOLER



> CRANE ACCESSORIES

Articulating Crane Technical Specifications

ROTATORS AND ATTACHMENTS

Gear rotators are designed to bolt to attachments used on IMT articulating cranes. They are integral to some attachments and may be purchased separately for others. Forks, augers, and other attachments aid in lifting a variety of material on IMT articulating cranes.

Note: Contact IMT for specific options for a particular crane or application, as not all options can be used on all cranes.

MATERIAL HANDLING FORKS

Designed to handle wallboard, pallets of material, and other flat building products.



Universal Fork



Pallet Fork



Battery-Powered Universal Fork

ROTATORS



Shaft-Style Rotator



Flange-Style Rotator

SPECIALTY ATTACHMENTS



Auger



Stone-Lifting Attachment