

- **MAXIMUM LOAD CAPACITY: 11,000 LBS**
- **MAXIMUM LIFT HEIGHT: 58' 5"**
- **MAXIMUM REACH: 44' 0"**
- **LOAD CAPACITY AT MAX. REACH: 1,600 LBS**
- **LOAD CAPACITY AT MAX. LIFT: 6,000 LBS**



Specifications:

P 50.18 PLUS

Performance

Unladen Weight (lbs)	29,300
Maximum Load Capacity (lbs)	11,000
Lift Height (ft)	58' 4"
Maximum Reach (ft)	44' 3"
Load Capacity at Max. Lift Height (lbs)	6,000
Load Capacity at Max. Reach (lbs)	1,600
Boom Side-Shift (in)	±17
Frame Leveling	±10°
Boom Sections	4

Powertrain

Engine	Deutz
Displacement/Cylinders	3.6/4
Engine Power (HP)	102
Reversible Fan	-
Maximum Speed (mph)	25
Fuel Tank Capacity (gal)	37
AdBlue Tank Capacity (gal)	4.7
Hydrostatic Transmission	● - 2V
EPD	●
Axles	Drop Portal
Reducers	RR700
Brakes	Dry Discs
Automatic Parking Brake	●

Hydraulic

Hydraulic Pump	LS
Delivery/Pressure (psi-gal/min)	3,625- 27.7
Hydraulic Oil Tank Capacity (gal)	31
Auxiliary Hydraulic Service on Boom	●
Rear Service Line	○

Cab

Cab Finishing
MCDC
FOPS II Cab
ROPS Cab
Controls
Reverse Shuttle

Configuration

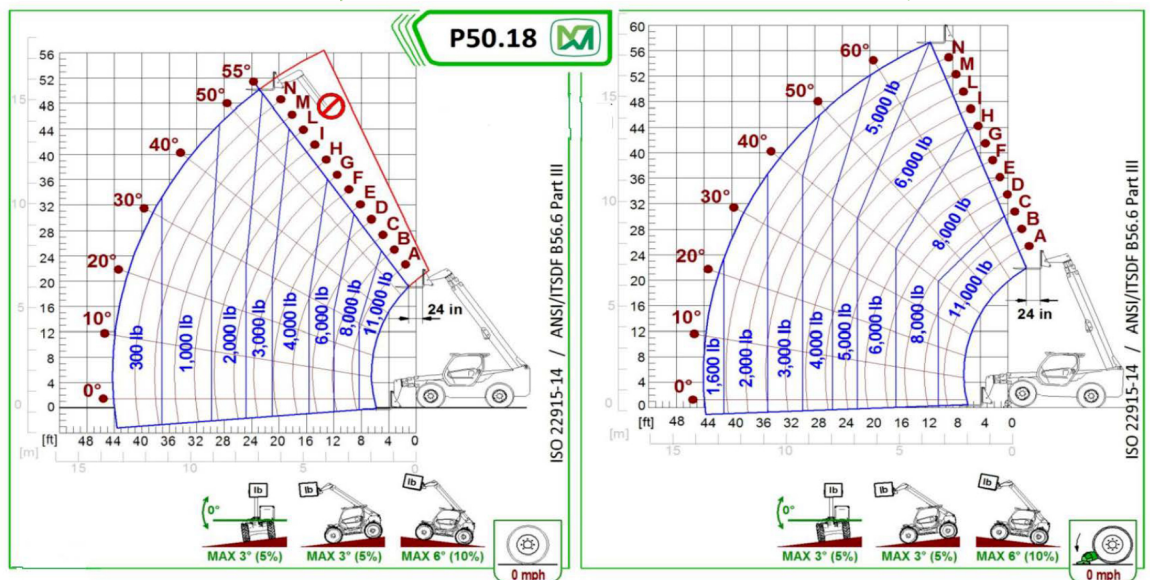
Hydropneumatic Suspension CS Merlo
Hydropneumatic Suspension BSS Merlo
Hydropneumatic Suspension EAS Merlo
Work lights on cab
Sun-shade in the cab
Tac-lock
Pre-arrangement for aerial work platform
Two floating forks
Pedal Inching-Control
Permanent four-wheel drive
4-Wheel Drive
3-Steering Modes
Standard tires
Hydraulically controlled stabilizers
Turret rotation
Tractor type approval
PTO
3-point rear linkage

Dimensions

Width (ft)	7' 11"
Height (ft)	8' 2"
Length (ft)	19' 7"
Wheelbase (ft)	9' 3"

ECO
Light
●
●
Electronic Joystick Control
Dual Reverse

● Standard ○ Optional



The technical data and other information in this document are not binding. We reserve the right to modify our products without prior notice as part of our policy of continuous improvement September 2019